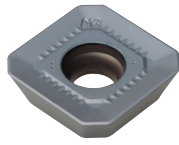
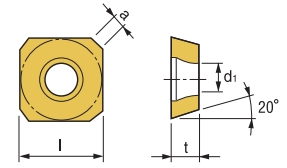




SEXT-R8



Features
Geometry designed for medium to roughing applications

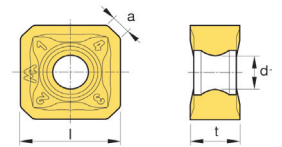


Designation	Coated Carbide								Cermet	Ceramic	Uncoated Carbide		(inch)				Applicable Cutter	
	PM10C	PM25C	PM30C	PM30P	PM35P	KM10P	KM20C	PT20S	PT30S	S300	PM20U	PTM30U	l	t	a	d1	Cutter	Page No.
SEXT 14M4AGSN-R8		147731 \$ 18.31				148926 \$ 17.77	148308 \$ 18.06						0.551	0.157	0.104	0.173	MM45°FM	E137

SNEX-A

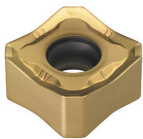


Features
Aluminum geometry

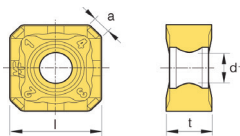


Designation	Coated Carbide										Uncoated Carbide		(inch)				Applicable Cutter	
	PTM50P	PT30P	PM25C	PM30P	PM35P	PM40P	KM20C	MM30P	PC9530	SM20P	PM20U	KTM10U	d	t	a	d1	Cutter	Page No.
SNEX1206ANN-A											148969 \$ 19.96		1/2	1/4	0.093	0.177	Face Mill DS8	E136

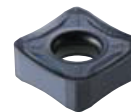
SNEX-F2/M



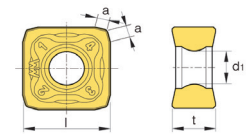
SNEX-F2



Features
Excellent geometries for a variety of materials

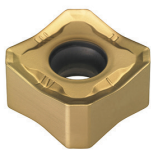


SNEX-M

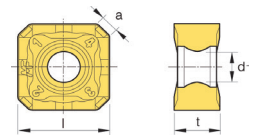


Designation	Coated Carbide										Uncoated Carbide		(inch)				Applicable Cutter	
	PTM50P	PT30P	PM25C	PM30P	PM35P	PM40P	KM20C	MM30P	PC9530	SM20P	PM20U	KTM10U	d	t	a	d1	Cutter	Page No.
SNEX1206ANN-F2								148835 \$ 24.95					1/2	1/4	0.093	0.177	Face Mill DS8	E136

SNMX-M

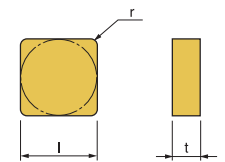
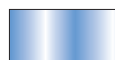
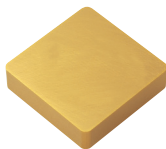


Features
General purpose geometries for a variety of materials



Designation	Coated Carbide										Uncoated Carbide		(inch)				Applicable Cutter	
	PTM50P	PT30P	PM25C	PM30P	PM35P	PM40P	KM10P	MM30P	PC9530	SM20P	PM20U	KTM10U	l	t	a	d1	Cutter	Page No.
SNMX1206ANN-M	145673 \$ 21.84		148796 \$ 21.84				148791 \$ 21.21	148904 \$ 21.84					1/2	1/4	0.093	0.177	Face Mill DS8	E136

SNU



Designation	Coated Carbide										Cermet	Uncoated Carbide			(inch)		
	PM20C	PM25C	PM30C	PM30P	PM35P	PM40P	KM20C	MM30P	MT30P	PT30S	PM20U	PTM30U	KTM10U	l	t	r	
SNU 433											146457 \$ 12.44	146449 \$ 12.63		1/2	3/16	3/64	

Quick Choice Grade Selection

