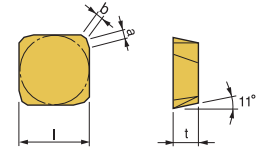
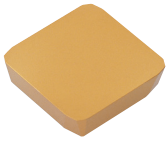


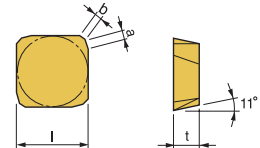
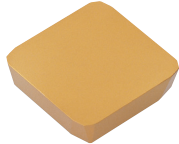


SPC



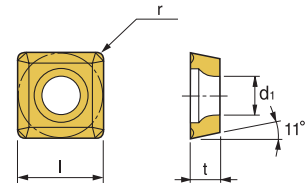
Designation	ISO	Coated Carbide							Cermet		Ceramic	Uncoated Carbide		(inch)			
		PM10C	PM25C	PM30C	PM30P	PM35P	KM20C	MM30P	PT20S	PT30S	S300	PM20U	PTM30U	l	t	a	b
SPC 42 EDR	1203		147731 \$ 18.31											1/2	1/8	0.055	0.039

SPK



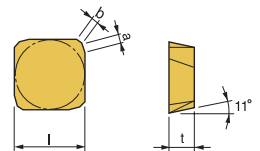
Designation	ISO	Coated Carbide										Uncoated Carbide		(inch)				Applicable Cutter	
		PM10C	PM25C	PM30C	PM30P	PM35P	PM40P	KM20C	MM30P	MT30P	SM20P	PM20U	PTM30U	l	t	a	b	Cutter	Page No.
SPK 42 EDR	1203		146480 \$ 18.32											1/2	1/8	0.055	0.039		
SPK 43 EDR	1204											146485 \$ 15.85		1/2	3/16	0.055	0.039		

SPMT



Designation	ISO	Coated Carbide							Cermet	Uncoated Carbide			(inch)				
		PM20C	PM25C	PM30C	PM35P	PM40P	KM20C	MM30P	MT30P	PT30S	PM20U	PTM30U	KTM10U	l	t	r	d1
SPMT 432	120408		146145 \$ 17.96								146143 \$ 14.18			1/2	3/16	1/32	0.220

SPU



Designation	ISO	Coated Carbide							Cermet		Ceramic	Uncoated Carbide		(inch)			
		PM10C	PM25C	PM30C	PM30P	PM35P	KM20C	MM30P	PT20S	PT30S	S300	PM20U	PTM30U	l	t	a	b
SPU 422	120308											146493 \$ 9.66		1/2	1/8	0.055	0.039
SPU 633	190412											146495 \$ 16.57		3/4	3/16	0.079	0.039

Quick Choice Grade Selection

P Steel	M Stainless Steel	K Cast Iron - Alum	S Heat Resistant Alloy
------------	----------------------	-----------------------	---------------------------