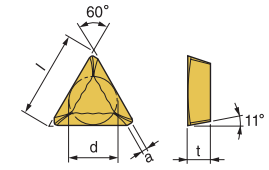


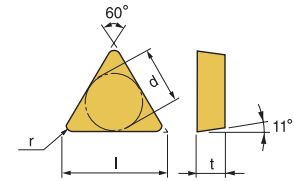


TPKR-F3



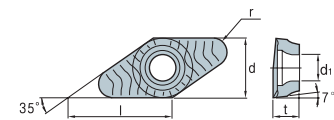
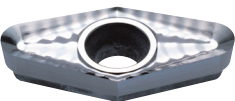
Designation	ISO	Coated Carbide							Cermet		Ceramic	Uncoated Carbide		(inch)				
		PM10C	PM25C	PM30C	PM30P	PM35P	KM20C	MM30P	PT20S	PT30S	S300	PM20U	PTM30U	l	d	t	r	a
TPKR 43 PDSR-F3	2204											146129 \$ 17.23		0.866	1/2	3/16	0.039	0.055
TPKR 43 PDR-F3	2204		146128 \$ 22.13											0.866	1/2	3/16	0.039	0.055

TPU



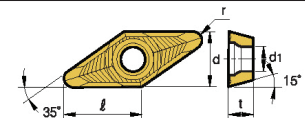
Designation	ISO	Coated Carbide							Cermet		Ceramic	Uncoated Carbide		(inch)					Cutter	Page No.
		PM10C	PM25C	PM30C	PM30P	PM35P	KM20C	MM30P	PT20S	PT30S	S300	PM20U	PTM30U	l	d	t	r			
TPU 212	110208											146631 \$ 6.26		0.433	1/4	3/32	1/32	STM Cutters E147		
TPU 221	110304											146740 \$ 7.24		0.433	1/4	1/8	1/64			
TPU 222	110308		147267 \$ 9.20									146741 \$ 7.24		0.433	1/4	1/8	1/32			
TPU 321	160304											146760 \$ 7.98		0.650	3/8	1/8	1/64			
TPU 322	160308		146709 \$ 9.87									146780 \$ 7.98		0.650	3/8	1/8	1/32			
TPU 323	160312		145545 \$ 10.05								146421 \$ 8.13		0.650	3/8	1/8	3/64				
TPU 431	220404											146800 \$ 11.20		0.866	1/2	3/16	1/64			
TPU 432	220408		146711 \$ 14.24									146820 \$ 11.20		0.866	1/2	3/16	1/32			
TPU 433	220412		146712 \$ 14.24									146840 \$ 11.20		0.866	1/2	3/16	3/64			
TPU 434	220416											146845 \$ 11.39		0.866	1/2	3/16	1/16			

VCKT-A



Designation	ISO	Coated Carbide							Cermet		Ceramic	Uncoated Carbide		(inch)					Applicable Holder	
		PM10C	PM25C	PM30C	PM30P	PM35P	KM20C	MM30P	PT20S	PT30S	S300	PM20U	KT10U	l	d	t	r	d1	Cutter	Page No.
VCKT 43.57.5N-A	220530											147425 \$ 37.56		0.790	1/2	7/32	0.118	0.220	Alumi Mill	
																			AME	E144
																			AMFM	E145

VDKT-MA



Designation	ISO	Coated Carbide							Cermet		Ceramic	Uncoated Carbide		(inch)					Applicable Holder	
		PM10C	PM25C	PM30C	PM30P	PM35P	KM20C	MM30P	PT20S	PT30S	S300	PM20U	KT10U	l	d	t	r	d1	Cutter	Page No.
VDKT11T210N-MA												148936 \$ 27.65		0.346	1/4	0.113	0.039	0.110	Alumi Mill	
																			AME	E144

Quick Choice Grade Selection

P Steel	M Stainless Steel	K Cast Iron - Alum	S Heat Resistant Alloy
------------	----------------------	-----------------------	---------------------------