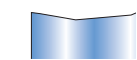
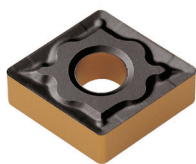
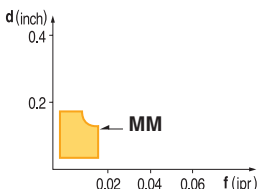


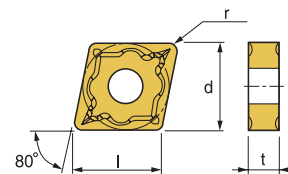
CNMG-MM



Excellent choice for a variety of steels including Stainless Steel

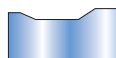
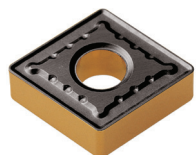


- USE Steels/Stainless Steels
- Recommendation
MM $d = 0.04 \sim 0.16$ inch
 $f = 0.004 \sim 0.016$ ipr

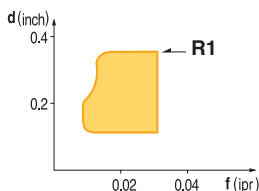


Designation	ISO	Coated Carbide										Cermet		Uncoated Carbide	(inch)				Applicable Holders	
		PT15C	PT20C	PT25C	PT30C	MT15C	MT20C	MT30P	KT05C	KT10C	ST10P	PT10S	PT20S	KTM10U	l	d	t	r	Holder	Page No.
CNMG 432-MM	120408			149256 \$ 13.28		149322 \$ 13.24		146014 \$ 12.65							0.508	1/2	3/16	1/32	Turning MCKNR/L MCLNR/L MCRNR/L	E48 E48 E49
CNMG 433-MM	120412						146019 \$ 12.65							0.508	1/2	3/16	3/64	Boring MCLNR/L PCLNR/L		

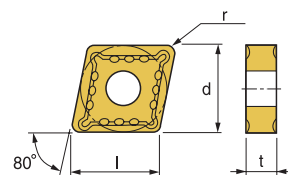
CNMG-R1



- Suitable for deep depth of cut and fast feed cutting of steel and cast iron
- Suitable for intermittent cutting

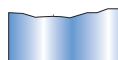
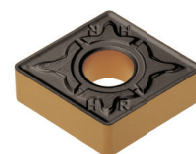


- USE Roughing
- Recommendation
R1 $d = 0.12 \sim 0.32$ inch
 $f = 0.012 \sim 0.032$ ipr

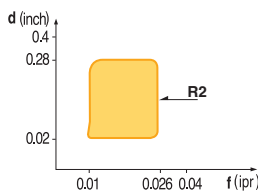


Designation	ISO	Coated Carbide										Cermet		Uncoated Carbide	(inch)				Applicable Holders		
		PT10C	PT20C	PT22C	PT25C	PT30C	PT40C	MT30P	KT05C	KT10C	KT15C	PT10S	PT20S	KTM10U	l	d	t	r	Holder	Page No.	
CNMG 432-R1	120408				149254 \$ 13.03	147485 \$ 13.03	146025 \$ 12.65								0.508	1/2	3/16	1/32	Turning MCKNR/L MCLNR/L MCRNR/L	E48 E48 E49	
CNMG 543-R1	160612				149345 \$ 19.67	146187 \$ 19.67								0.634	5/8	1/4	3/64	Boring MCLNR/L PCLNR/L			E64 E67
CNMG 544-R1	160616					146028 \$ 19.67								0.634	5/8	1/4	1/16				
CNMG 643-R1	190612				149330 \$ 27.07	146198 \$ 26.32								0.760	3/4	1/4	3/64				
CNMG 644-R1	190616					146033 \$ 26.32								0.760	3/4	1/4	1/16				

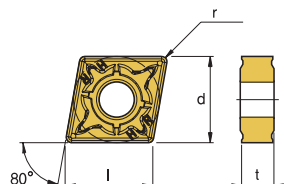
CNMG-R2



- Excellent chip control at deep depth of cut and fast feed rate
- Strong cutting edge makes excellent cutting performance at intermittent cutting



- USE Roughing
- Recommendation
R2 $d = 0.1 \sim 0.28$ inch
 $f = 0.01 \sim 0.026$ ipr



Designation	ISO	Coated Carbide										Cermet		Uncoated Carbide	(inch)				Applicable Holders		
		PT10C	PT20C	PT25C	PT30C	PT40C	MT20C	MT30P	KT05C	KT10C	ST10P	PT10S	PT20S	KTM10U	l	d	t	r	Holder	Page No.	
CNMG 432-R2	120408			149398 \$ 13.24										0.508	1/2	3/16	1/32	Turning MCKNR/L MCLNR/L MCRNR/L	E48 E48 E49		
CNMG 433-R2	120412				147495 \$ 12.65									0.508	1/2	3/16	3/64			Boring MCLNR/L PCLNR/L	E64 E67
CNMG 543-R2	160612			149399 \$ 13.24		148700 \$ 20.00								0.634	5/8	1/4	3/64				
CNMG 642-R2	190608				147500 \$ 26.71									0.760	3/4	1/4	1/32				
CNMG 643-R2	190612			149409 \$ 19.97	147501 \$ 26.32	148699 \$ 26.32								0.760	3/4	1/4	3/64				

Quick Choice Grade Selection

P Steel	M Stainless Steel	K Cast Iron - Alum	S Heat Resistant Alloy
------------	----------------------	-----------------------	---------------------------