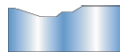
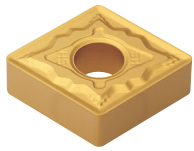
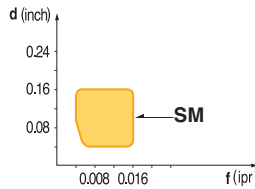




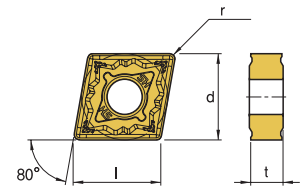
## CNMG-SM (SM Chipbreaker is for Stainless Steel medium feed.)



- Exclusive design for stainless steel cutting provides longer tool life
- Wear resistance has been reinforced through high rake angle of chip breaker land

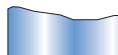
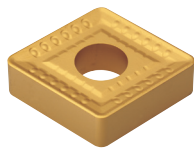


- USE Stainless Steel
- Recommendation  
SM  $d = 0.04 \sim 0.16$ inch  
 $f = 0.004 \sim 0.016$ ipr

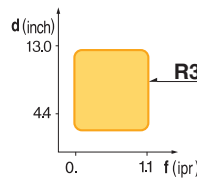


Designation	ISO	Coated Carbide										Cermet		Uncoated Carbide	(inch)				Applicable Holders	
		PT10C	PT20C	PT22C	PT30C	MT15C	MT20C	MT30P	KT05C	KT10C	ST10P	PT10S	PT20S	KTM10U	l	d	t	r	Holder	Page No.
CNMG 431-SM	120404					149296 \$ 13.28		147487 \$ 13.03			148379 \$ 12.65				0.508	1/2	3/16	1/64	Turning MCKNR/L E48 MCLNR/L E48 MCRNR/L E49	
CNMG 432-SM	120408							147489 \$ 13.03			148380 \$ 13.03				0.508	1/2	3/16	1/32		
CNMG 433-SM	120412							146040 \$ 12.65			148855 \$ 12.65				0.508	1/2	3/16	3/64	Boring MCLNR/L E64 PCLNR/L E67	
CNMG 543-SM	160612							148940 \$ 19.67						0.634	5/8	1/4	3/64			
CNMG 643-SM	190612							148939 \$ 26.32			148952 \$ 26.32			0.760	3/4	1/4	3/64			

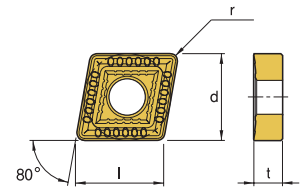
## CNMM-R3



- Specially designed toughest cutting edge provides superior cutting performance at deep depth of cut and fast feed rate
- Unique design of dot on cutting edge makes smooth chip flow and reduce cutting force

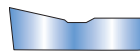
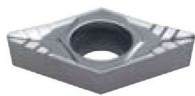


- USE Heavy Duty
- Recommendation  
R3  $d = 0.16 \sim 0.52$ inch  
 $f = 0.018 \sim 0.06$ ipr



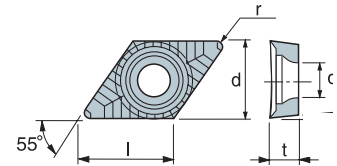
Designation	ISO	Coated Carbide										Cermet		Uncoated Carbide	(inch)				Applicable Holders	
		PT10C	PT20C	PT22C	PT30C	PM10P	MT20C	MT30P	KT05C	KT10C	ST10P	PT10S	PT20S	KTM10U	l	d	t	r	Holder	Page No.
CNMM 432-R3	120408					147505 \$ 12.86								0.508	1/2	3/16	1/32	Turning MCKNR/L E48 MCLNR/L E48 MCRNR/L E49		
CNMM 643-R3	190612					147508 \$ 26.32								0.760	3/4	1/4	3/64		Boring MCLNR/L E64 PCLNR/L E67	

## DCGT-AM (AM Chipbreaker is for Aluminum)



- Exclusive chip breaker for aluminum and aluminum alloy

- USE Aluminum Cutting
- Recommendation  
AP  $d = 0.020 \sim 0.157$ inch  
 $f = 0.002 \sim 0.020$ ipr



Designation	ISO	Coated Carbide										Diamond Coated	Uncoated Carbide	(inch)				Applicable Holders	
		PT10C	PT20C	PT22C	PT30C	PM10P	MT20C	MT30P	KT05C	KT10C	ST10P	ND100	KT10U	l	d	t	r	Holder	Page No.
DCGT 21.50.5-AM	070202												146048 \$ 14.76	0.307	1/4	3/32	0.008	Turning SDJCR/L E56 SDNCN E57	
DCGT 21.52-AM	070208												146052 \$ 15.18	0.307	1/4	3/32	1/32		
DCGT 32.50.5-AM	11T302												145664 \$ 17.79	0.457	3/8	5/32	0.008	Boring SDQCR E70 SDUCR E70 SDZCR/L E71	
DCGT 32.51-AM	11T304												146059 \$ 17.29	0.457	3/8	5/32	1/64		
DCGT 32.52-AM	11T308												146063 \$ 17.29	0.457	3/8	5/32	1/32		

### Quick Choice Grade Selection

P Steel	M Stainless Steel	K Cast Iron - Alum	S Heat Resistant Alloy
------------	----------------------	-----------------------	---------------------------