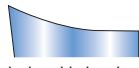
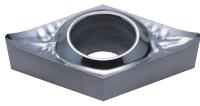
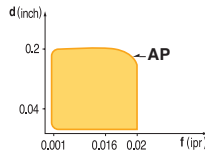


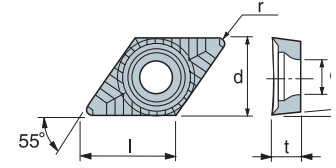
DCGT-AP (AP Chipbreaker is for Aluminum)



Exclusive chip breaker for aluminum and aluminum alloy

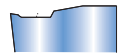


- USE Aluminum Cutting
- Recommendation
AP $d = 0.005 \sim 0.2 \text{ inch}$
 $f = 0.001 \sim 0.02 \text{ ipr}$

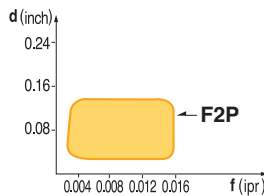


Designation	ISO	Coated Carbide										Diamond Coated	Uncoated Carbide	(inch)				Applicable Holders	
		PT10C	PT20C	PT22C	PT30C	PM10P	MT20C	MT30P	KT05C	KT10C	ST10P			ND100	KT10U	l	d	t	r
DCGT 21.50.5-AP	070202												146988 \$ 14.76	0.307	1/4	3/32	0.008	Turning SDJCR/L E56 SDNCN E57	
DCGT 21.51-AP	070204											146989 \$ 15.18	0.307	1/4	3/32	1/64			
DCGT 32.50.5-AP	11T302											146990 \$ 17.79	0.457	3/8	5/32	0.008	Boring SDQCR E70 SDUCR E70 SDZCR/L E71		
DCGT 32.51-AP	11T304											146703 \$ 39.89	0.457	3/8	5/32	1/64			
DCGT 32.52-AP	11T308											146704 \$ 39.89	0.457	3/8	5/32	1/32			
DCGT 32.53-AP	120404											147764 \$ 17.29	0.457	3/8	5/32	3/64			

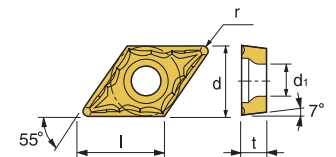
DCMT-F1P/F2P



- Excellent chip control at wide range of cutting conditions
- Suitable for stainless steel cutting

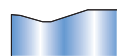
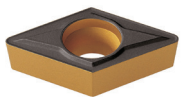


- USE Medium
- Recommendation
F2P $d = 0.02 \sim 0.14 \text{ inch}$
 $f = 0.002 \sim 0.016 \text{ ipr}$

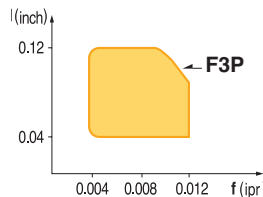


Designation	ISO	Coated Carbide										Cermet		Uncoated Carbide	(inch)				Applicable Holders	
		PT10C	PT15C	PT20C	PT25C	PT30C	MT15C	MT20C	MT30P	KT10C	ST10P	PT10S	PT20S		KTM10U	l	d	t	r	Holder
DCMT 21.51-F2P	070204		149503 \$ 11.12		149260 \$ 12.35											0.307	1/4	3/32	1/64	Turning SDJCR/L E56 SDNCN E57
DCMT 21.52-F2P	070208		149505 \$ 11.12		149507 \$ 11.12											0.307	1/4	3/32	1/32	
DCMT 32.50.5-F2P	11T302		149509 \$ 13.75													0.457	3/8	5/32	0.008	Boring SDQCR E70 SDUCR E70 SDZCR/L E71
DCMT 32.51-F2P	11T304		149511 \$ 13.75		149222 \$ 13.75	146069 \$ 13.37	149250 \$ 13.75									0.457	3/8	5/32	1/64	
DCMT 32.52-F2P	11T308		149513 \$ 13.75		149226 \$ 13.75		149292 \$ 13.75									0.457	3/8	5/32	1/32	

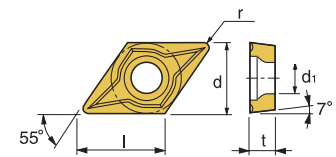
DCMT-F3P



- Excellent chip control at shallow depth of cut and low feed rate
- Excellent surface finish of workpiece due to reduced cutting force
- Suitable for fine boring



- USE Medium
- Recommendation
F3P $d = 0.04 \sim 0.12 \text{ inch}$
 $f = 0.004 \sim 0.012 \text{ ipr}$



Designation	ISO	Coated Carbide										Cermet		Uncoated Carbide	(inch)				Applicable Holders	
		PT10C	PT15C	PT22C	PT25C	PT30C	MT15C	MT30P	KT05C	KT10C	PT10S	PT20S	KTM10U		PM20U	l	d	t	r	Holder
DCMT 21.51-F3P	070204				149332 \$ 12.35											0.307	1/4	3/32	1/64	Turning SDJCR/L E56 SDNCN E57
DCMT 32.51-F3P	11T304				149267 \$ 13.75	146030 \$ 13.75										0.457	3/8	5/32	1/64	
DCMT 32.52-F3P	11T308		149329 \$ 13.75		149328 \$ 13.75	146032 \$ 13.37										0.457	3/8	5/32	1/32	Boring SDQCR E70 SDUCR E70 SDZCR/L E71