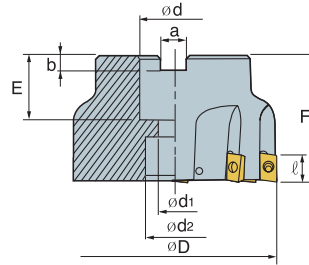
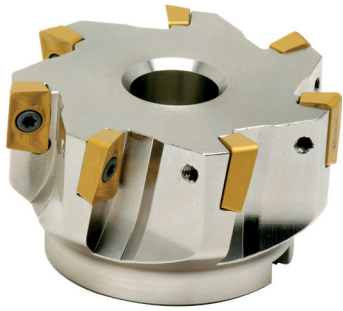


## APFM 11/16 - 90° Face Mill



(inch)

Designation	Code No.	Price \$	$\phi D$	$\phi d$	$\phi d_1$	$\phi d_2$	a	b	E	F	$\ell$	No. of Inserts	
APFM 11-90	2.00	147138	270.18	2.000	0.750	0.413	0.630	0.321	0.220	0.787	1.750	0.433	5
	2.50	148249	314.92	2.500	1.000	0.551	0.827	0.384	0.248	0.787	1.750	0.433	8
	3.00	148250	394.70	3.000	1.000	0.551	0.827	0.384	0.248	0.866	2.000	0.433	8
APFM 16-90	2.00C	147009	270.18	2.000	0.750	0.413	0.630	0.321	0.220	0.787	1.750	0.630	4
	2.00	147117	314.92	2.000	0.750	0.413	0.630	0.321	0.220	0.787	1.750	0.630	5
	2.50C	147011	351.58	2.500	1.000	0.551	0.827	0.384	0.248	0.787	1.750	0.630	5
	2.50	147118	351.58	2.500	1.000	0.551	0.827	0.384	0.248	0.787	1.750	0.630	6
	3.00C	147013	405.02	3.000	1.000	0.551	0.827	0.384	0.248	0.866	2.000	0.630	5
	3.00	147119	405.02	3.000	1.000	0.551	0.827	0.384	0.248	0.866	2.000	0.630	7
	4.00C	147000	492.24	4.000	1.500	-	2.205	0.636	0.394	1.181	2.500	0.630	6
	4.00	147120	492.24	4.000	1.500	-	2.205	0.636	0.394	1.181	2.500	0.630	8
	5.00C	147015	653.84	5.000	1.500	-	2.205	0.636	0.394	1.181	2.500	0.630	6
	5.00	147121	1,183.72	5.000	1.500	-	2.205	0.636	0.394	1.181	2.500	0.630	9
	6.00C	147017	1,598.00	6.000	1.500	-	2.205	0.636	0.394	1.181	2.500	0.630	7
	6.00	147122	1,737.06	6.000	1.500	-	2.205	0.636	0.394	1.181	2.500	0.630	9

\*AA:0°, AR:9°, RR:-10 ~ -5°

C = Coarse Pitch

### Parts

Designation	Insert	Screw	Wrench
APFM 11 90°	APXT 11T3~	FTKA 02565S	TW 08S
APFM 16 90°	APKT 1604~	FTKA 0410	TW 15S
		146595 \$ 11.76	146728 \$ 34.98
		146969 \$ 9.48	146801 \$ 34.98

▶ P. E94

### Recommended Cutting Condition

Workpiece	Cutting Condition		Grade
	V(sfm)	f(ipf)	
P	490~980	0.003~0.010	Coated (PM10, 20, 30C, PM30P) Uncoated (PM20U)
M	320~480	0.003~0.008	Coated (MM30P)
K	Alum 500~1000	0.003~0.012	Coated (KM20C) Uncoated (KTM10U)