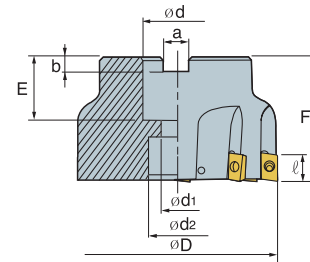


## APFM 16 - 90° Face Mill H13 Hardened Bodies 48HRC



### H13 HARDENED CUTTER BODIES 48HRC

- Features:**
- Longer insert life
  - Longer body life
  - Higher rigidity
  - Better feed rates



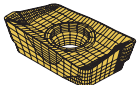
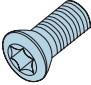
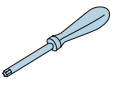
(inch)

Designation	Code No.	Price \$	$\phi D$	$\phi d$	$\phi d_1$	$\phi d_2$	a	b	E	F	$\ell$	No. of Inserts	
APFM 16-90	2.00C	148809	269.70	2.000	0.750	0.413	0.630	0.321	0.220	0.787	1.750	0.630	4
	2.00	148805	269.70	2.000	0.750	0.413	0.630	0.321	0.220	0.787	1.750	0.630	5
3.00C	3.00C	148804	405.35	3.000	1.000	0.551	0.827	0.384	0.248	0.866	2.000	0.630	5
	3.00	148806	405.35	3.000	1.000	0.551	0.827	0.384	0.248	0.866	2.000	0.630	7
4.00C	4.00C	148808	506.11	4.000	1.500	-	2.205	0.636	0.394	1.181	2.500	0.630	6
	4.00	148810	506.11	4.000	1.500	-	2.205	0.636	0.394	1.181	2.500	0.630	8

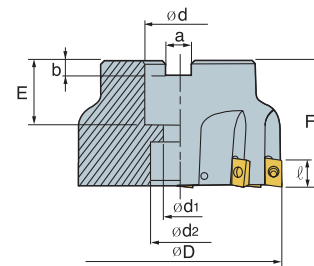
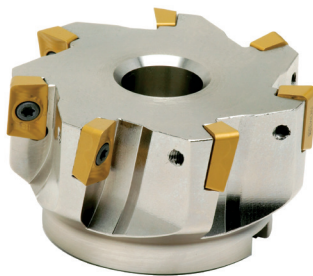
\*AA:0°, AR:9°, RR:-10 ~ -5°

C = Coarse Pitch

#### Parts

Designation	Insert	Screw	Wrench
APFM 16 90°	 APKT 1604~ P. E93	 FTKA 0410 146969 \$ 9.48	 TW 15S 146801 \$ 34.98

## AP(D)FM 10/15 90° Face Mill

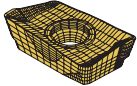
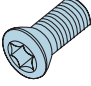
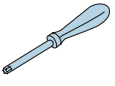


(inch)

Designation	Code No.	Price \$	$\phi D$	$\phi d$	$\phi d_1$	$\phi d_2$	a	b	E	F	$\ell$	No. of Inserts	Insert	
APFM 10-90	2.00	147842	270.18	2.000	0.750	0.413	0.630	0.321	0.220	0.787	1.750	0.394	5	AP_T 1003
	2.50	147843	314.92	2.500	1.000	0.551	0.827	0.384	0.248	0.787	1.750	0.394	8	
	3.00	147844	402.08	3.000	1.000	0.551	0.827	0.384	0.248	0.866	2.000	0.394	8	
ADFM 15-90	2.00	147849	270.18	2.000	0.750	0.413	0.630	0.321	0.220	0.787	1.750	0.591	5	ADKT 1505
	2.50	147850	314.92	2.500	1.000	0.551	0.827	0.384	0.248	0.787	1.750	0.591	6	
	3.00	147851	405.02	3.000	1.000	0.551	0.827	0.384	0.248	0.866	2.000	0.591	7	
	4.00	147852	508.22	4.000	1.250	-	2.205	0.636	0.394	1.181	2.000	0.591	8	

\*AA:0°, AR:9°, RR:-10 ~ -5°

#### Parts

Designation	Insert	Screw	Wrench
APFM 10 90° 1003 ADFM 15 90° 1505	 APKT / APXT 1003 ADKT 1505 P. E92	 FTKA 0410 146969 \$ 9.48	 TW 15S 146801 \$ 34.98