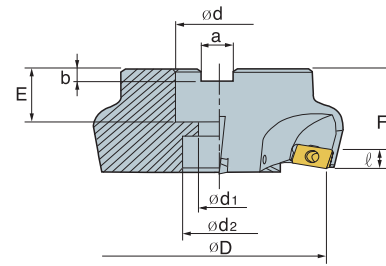
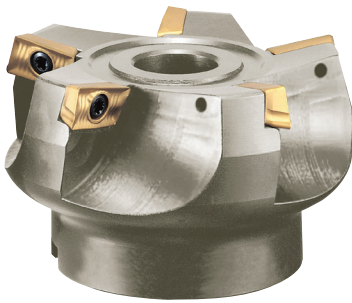


APFM 11/16 - 15° Face Mill



(inch)

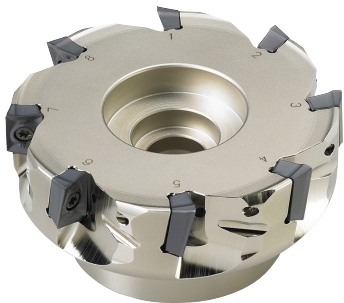
Designation	Code No.	Price \$	$\varnothing D$	$\varnothing d$	$\varnothing d_1$	$\varnothing d_2$	a	b	E	F	ℓ	No. of Inserts
APFM 11-15 2.50	147123	314.92	2.50	1.000	0.551	0.827	0.384	0.248	0.787	1.750	0.157	6
APFM 16-15 3.00	147124	405.02	3.00	1.000	0.551	0.827	0.384	0.248	0.866	2.000	0.236	5
4.00	147371	508.22	4.00	1.500	-	2.205	0.636	0.394	1.181	2.000	0.236	6
5.00	147372	656.15	5.00	1.500	-	2.205	0.636	0.394	1.181	2.500	0.236	6

Parts

Designation	Insert	Screw	Wrench
APFM 11 15°	APXT 11T3~	FTKA 02565S	TW 08S
APFM 16 15°	APKT 1604~	FTKA 0410	TW 15S
		146595	146728
		146969	146801
		\$ 11.76	\$ 34.98
		\$ 9.48	\$ 34.98

► P. E94

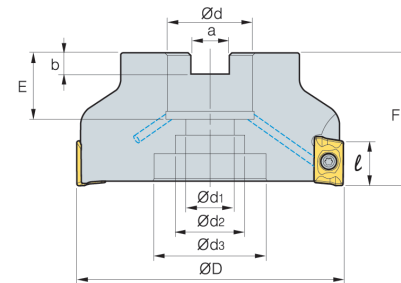
APFM 18 - 90° Face Mill



Coolant through

Features:

- Lower cutting resistance
- Better chip control
- Longer tool life



(inch)

Designation	Code No.	Price \$	$\varnothing D$	$\varnothing d$	$\varnothing d_1$	$\varnothing d_2$	a	b	E	F	ℓ	No. of Inserts
APFM 18-90 4200HS	145586	613.53	2.00	0.750	0.433	0.630	0.321	0.220	0.827	1.750	0.669	5
APFM 18-90 4250HS	145587	658.23	2.50	0.750	0.433	0.630	0.321	0.220	0.827	1.750	0.669	6
APFM 18-90 4300HS	145588	759.13	3.00	1.000	0.551	0.827	0.384	0.248	0.866	2.000	0.669	7
APFM 18-90 4500HS	145591	955.34	5.00	1.500	0.827	1.142	0.636	0.394	1.181	2.000	0.669	9

Parts

Designation	Insert	Screw	Wrench
AP 18 90°	APMT 1806 PDSR-M	FTKA 0410	TW 15S
		146969	146801
		\$ 9.48	\$ 34.98

► P. E93