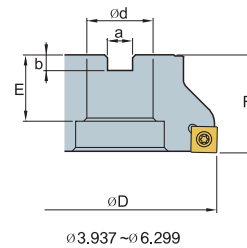


## Max Mill 90° Face Mill



(inch)

Designation	Code No.	Price \$	ØD	Ød	Ød <sub>1</sub>	a	b	E	F	No. of Inserts	Insert
MM 90° 4250FM	146805	543.48	2.500	1.000	0.551	0.370	0.248	0.787	1.575	4	SDXT1305
4300FM	146806	593.66	3.000	1.000	0.551	0.384	0.248	0.866	1.969	5	
4400FM	146807	694.04	4.000	1.250	-	0.510	0.319	0.866	1.969	6	
4500FM	146808	841.83	5.000	1.500	-	0.636	0.394	1.181	2.480	8	
4600FM	146809	2,003.46	6.000	2.000	-	0.758	0.433	1.181	2.480	8	

### Available Insert

SDXT	Designation
	SDXT130508R- F2 M A

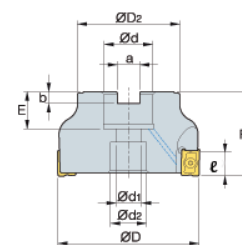
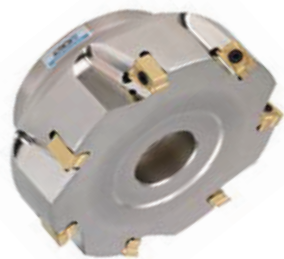
➤ P. E98

### Parts

Screw	Wrench	Assembling
FTNC 04511 146424 \$ 6.45	TW20S 147216 \$ 31.83	

See pages E124 through E126 for Cutting Conditions

## DS4 Face Mill



\*AR:-6°, RR:-19° ~ 13°

(inch)

Designation	Code No.	Price \$	ØD	ØD2	Ød	Ød <sub>1</sub>	Ød <sub>2</sub>	a	b	E	F	No. of Inserts	ℓ	Insert
DS4 3200HR	148373	803.70	2.00	1.772	0.75	0.413	0.630	0.313	0.220	0.787	1.75	7	0.354	LNMX100605PNR
3400HR	148391	1,541.51	4.00	2.874	1.25	0.709	1.024	0.500	0.319	0.866	2.00	12	0.354	
4250HR-M	148876	936.52	2.50	2.205	1.00	0.551	0.827	0.375	0.248	0.866	1.75	6	0.551	LNMX151008PNR
4300HR	148877	987.31	3.00	2.205	1.00	0.551	0.827	0.375	0.248	0.866	2.00	5	0.551	

### Inserts / Parts

Designation	Available Insert	Screw	Wrench
LNMX100605PNR-F2	LNMX	FTKA 0307 148210 \$ 11.76	TW09S 148191 \$ 31.83
LNMX151008PNR-M		FTKA 0421B 146969 \$ 9.48	TW 15S 146801 \$ 34.98

➤ P. E94-95