



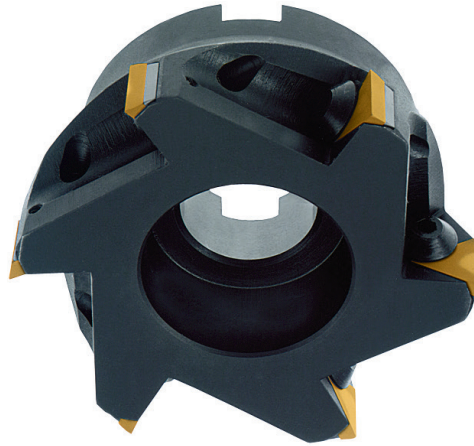
## Square Shoulder Milling Cutters 90°

### Positive Rake 90° Right Hand Cut

**Note:** Square shoulder milling cutters are furnished without cutting inserts. Precision and utility inserts can be used.

#### Tool Angles

- Cutting rake 0°
- Setting angle 90°
- Axial rake 0°



Cutting Dia.	Shank Arbor Hole	No. of Inserts	Insert	Code No.	Price \$
2	3/4	3	TPG	141220	545.46
2-1/2	1	3	TPU 43	141200	796.05
3	1	4	TPU 43	141202	961.45
4	1-1/2	5	TPU 43	141204	1,231.37
5	1-1/2	6	TPU 43	141206	1,678.09
6	2	7	TPU 43	141208	2,013.56

➤ P.E104

### Spare Parts

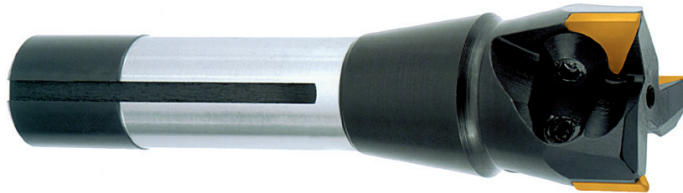
Cutting Dia.	For 2" Cutters		For 2-1/2" to 6" Cutters	
	Code No.	Price \$	Code No.	Price \$
Clamp Screw	141061	13.28	141210	28.83
Shim	-	-	141212	10.82
Shim Screw	-	-	141214	10.43
Hex Key	-	-	-	-

## Carbide Insert End Mills 90°

**Note:** Insert End Mills are furnished without cutting inserts. Precision and utility inserts can be used.

#### Tool Angles

- Cutting rake 0°
- Setting angle 90°
- Axial rake 0°



Cutting Dia.	Shank	No. of Inserts	Insert	Code No.	Price \$
1/2	1/2" Str. Shk. Weldon	1	TPG/TPU-21	141000	216.38
3/4	3/4" Str. Shk. Weldon	2	TPG/TPU-21	141002	208.52
1	3/4" Str. Shk. Weldon	2	TPG/TPU-22	141003	257.20
1-1/4	3/4" Str. Shk. Weldon	2	TPG/TPU/TPC-32	141004	320.40
1-1/2	3/4" Str. Shk. Weldon	3	TPG/TPU/TPC-32	141005	425.09
2	3/4" Str. Shk. Weldon	3	TPG/TPU/TPC-32	141007	536.32
1-1/2	1" Str. Shk. Weldon	3	TPG/TPU/TPC-32	141010	391.63
2	1" Str. Shk. Weldon	3	TPG/TPU/TPC-32	141012	515.15
1-1/4	R-8 Bridgeport	2	TPG/TPU/TPC-32	141013	369.11
1-1/2	R-8 Bridgeport	3	TPG/TPU/TPC-32	141014	448.39
1-3/4	R-8 Bridgeport	3	TPG/TPU/TPC-32	141015	522.73
2	R-8 Bridgeport	3	TPG/TPU/TPC-32	141016	544.56

➤ P.E104

### Spare Parts

Description	Code No.	Price \$
Screw for 1/2"	141244	21.73
Screw for 3/4", 7/8", 1"	141060	12.58
Screw for 1-1/2"	141064	11.06
All other sizes	141061	13.28