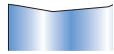
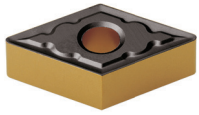
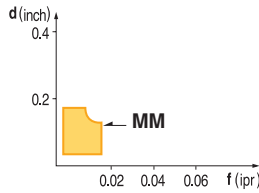


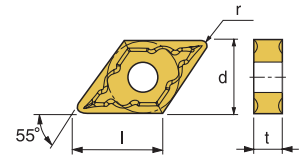
## DNMG-MM



Excellent choice for a variety of steels including Stainless Steel

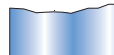


- USE Steels/Stainless Steels
- Recommendation  
MM  $d = 0.04 \sim 0.16$  inch  
 $f = 0.004 \sim 0.016$  ipr

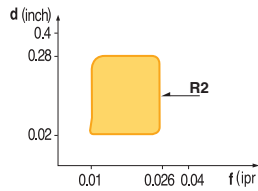


Designation	ISO	Coated Carbide										Cermet		Uncoated Carbide	(inch)				Applicable Holders	
		PT10C	PT20C	PT22C	PT25C	PT30C	MT20C	MT30P	KT05C	KT10C	ST10P	PT10S	PT20S	KTM10U	l	d	t	r	Holder	Page No.
DNMG 431-MM	150404				149258 \$ 16.25										0.610	1/2	3/16	1/64	Turning MDJNR/L	E49
DNMG 432-MM	150408				149279 \$ 16.25										0.610	1/2	3/16	1/32	Boring PDSNR/L PDUNR/L	E67 E68

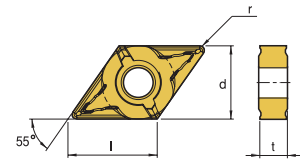
## DNMG-R2



- Excellent chip control at deep depth of cut and fast feed rate
- Strong cutting edge makes excellent cutting performance at intermittent cutting

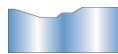
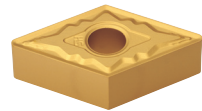


- USE Roughing
- Recommendation  
F3  $d = 0.1 \sim 0.28$  inch  
 $f = 0.01 \sim 0.026$  ipr

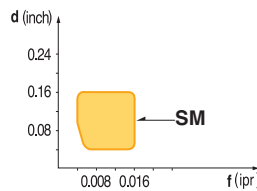


Designation	ISO	Coated Carbide										Cermet		Uncoated Carbide	(inch)				Applicable Holders	
		PT10C	PT20C	PT22C	PT30C	PM10P	MT20C	MT30P	KT05C	KT10C	ST10P	PT10S	PT20S	KTM10U	l	d	t	r	Holder	Page No.
DNMG 432-R2	150408				147564 \$ 16.25										0.610	1/2	3/16	1/32	Turning MDJNR/L	E49
																			Boring PDSNR/L PDUNR/L	E67 E68

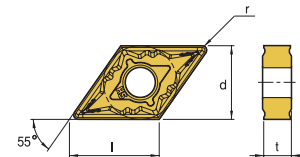
## DNMG-SM



- Exclusive design for stainless steel cutting provides longer tool life
- Wear resistance has been reinforced through high rake angle of chip breaker land



- USE Stainless Steel
- Recommendation  
SM  $d = 0.04 \sim 0.16$  inch  
 $f = 0.004 \sim 0.016$  ipr



Designation	ISO	Coated Carbide										Cermet		Uncoated Carbide	(inch)				Applicable Holders	
		PT10C	PT20C	PT22C	PT30C	MT15C	MT20C	MT30P	KT05C	KT10C	ST10P	PT10S	PT20S	KTM10U	l	d	t	r	Holder	Page No.
DNMG 431-SM	150404				149297 \$ 16.24										0.610	1/2	3/16	1/64	Turning MDJNR/L	E49
DNMG 432-SM	150408						147561 \$ 15.96								0.610	1/2	3/16	1/32	Boring PDUNR/L	E68

### Quick Choice Grade Selection

P Steel	M Stainless Steel	K Cast Iron - Alum	S Heat Resistant Alloy
------------	----------------------	-----------------------	---------------------------