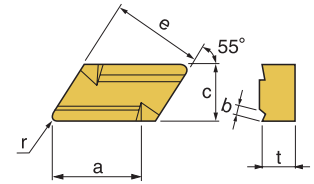


KNUX 55° Negative Turning Inserts



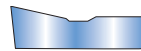
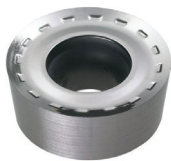
- USE
General Cutting



Designation	ISO	Coated Carbide									Uncoated Carbide		(inch)						Applicable Holders	
		PT10C	PT20C	PT22C	PT25C	PT30C	MT20C	MT30P	KT05C	KT10C	PT20U	PTM30U	a	e	t	r	c	b	Holder	Page No.
KNUX 160405 R11					149223 \$ 20.80	147597 \$ 20.80						146853 \$ 16.21	0.630	0.636	3/16	0.0197	3/8	0.087	Turning CKJNR/L	E47
KNUX 160410 R11						147599 \$ 20.80						0.630	0.636	3/16	0.0394	3/8	0.087			
KNUX 160405 L11					149266 \$ 20.80							0.630	0.636	3/16	0.0197	3/8	0.087			
KNUX 160410 L11					149336 \$ 20.21							0.630	0.636	3/16	0.0394	3/8	0.126			

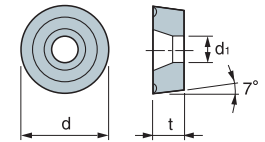
RC__ Positive Turning Inserts

RCGT-AM ("AM" Chipbreaker is for Aluminum)



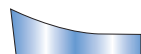
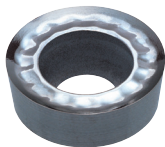
Exclusive chip breaker for aluminum and aluminum alloy

- USE
Aluminum Cutting
- Recommendation
AP $d = 0.020 \sim 0.157$ inch
 $f = 0.002 \sim 0.020$ ipr

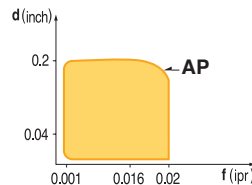


Designation	ISO	Coated Carbide									Cermet		Uncoated Carbide		(inch)				Applicable Holders	
		PT10C	PT20C	PT22C	PT30C	PM10P	MT20C	MT30P	KT05C	KT10C	PT10S	PT20S	KT10U	PM20U	l	d	t	d1	Holder	Page No.
RCGT 0803MO-AM												146078 \$ 16.21		0.315	1/8	9/64	Turning PRDCN	E55		
RCGT 1003MO-AM												146081 \$ 20.59		0.394	1/8	5/32				
RCGT 10T3MO-AM												145665 \$ 20.59		0.394	5/32	11/64				
RCGT 1204MO-AM												145666 \$ 24.14		0.472	3/16	11/64				

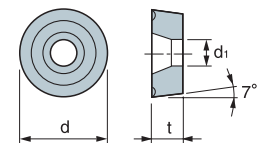
RCGT-AP ("AP" Chipbreaker is for Aluminum)



Exclusive chip breaker for aluminum and aluminum alloy



- USE
Aluminum Cutting
- Recommendation
AP $d = 0.005 \sim 0.2$ inch
 $f = 0.001 \sim 0.02$ ipr



Designation	ISO	Coated Carbide									Cermet		Uncoated Carbide		(inch)				Applicable Holders	
		PT10C	PT20C	PT22C	PT30C	PM10P	MT20C	MT30P	KT05C	KT10C	PT10S	PT20S	KT10U	PM20U	l	d	t	d1	Holder	Page No.
RCGT 0803MO-AP												146315 \$ 16.21		0.315	1/8	9/64	Turning PRDCN	E55		
RCGT 10T3MO-AP												147377 \$ 21.20		0.394	5/32	11/64				
RCGT 1204MO-AP												148421 \$ 24.84		0.472	3/16	11/64				