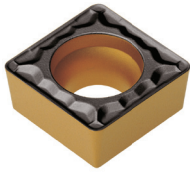
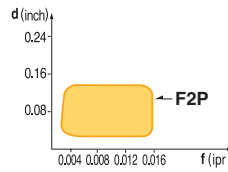


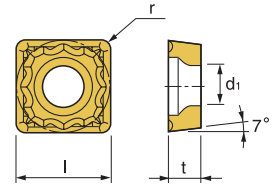
## SCMT-F2P



- Excellent chip control at wide range of cutting conditions
- Suitable for stainless steel cutting

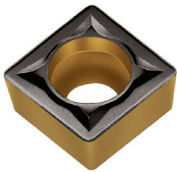


- USE Medium
- Recommendation  
F2P  $d = 0.02 \sim 0.14$  inch  
 $f = 0.002 \sim 0.016$  ipr

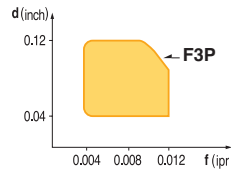


Designation	ISO	Coated Carbide											Cermet			Diamond Coated	Uncoated Carbide	(inch)			Applicable Holders	
		PT10C	PT15C	PT20C	PT30C	PM10P	KT05C	KT10C	PT10S	PT20S	ST10P	ND100	KT10U	l	t	r	Holder	Page No.				
SCMT 32.52-F2P	09T308		149281 \$ 11.03		146932 \$ 10.74											3/8	5/32	1/32	SSBCR/L SSSCR/L SSKCR/L	E57 E58 E71		

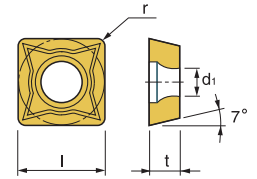
## SCMT-F3P



- Suitable for intermittent cutting and cast iron machining
- Good surface finish due to low cutting force
- Suitable for both boring and outer diameter turning



- USE Medium
- Recommendation  
F3P  $d = 0.04 \sim 0.12$  inch  
 $f = 0.004 \sim 0.012$  ipr

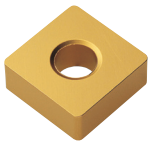


Designation	ISO	Coated Carbide											Cermet			Diamond Coated	Uncoated Carbide	(inch)			Applicable Holders	
		PT10C	PT15C	PT20C	PT25C	PT30C	KT10C	KT15C	PT20S	PT30S	ND100	KT10U	l	t	r	Holder	Page No.					
SCMT 21.51-F2P	070204					146107 \$ 10.41										1/4	3/32	1/64	SSBCR/L SSSCR/L	E57 E58		
SCMT 32.51-F3P	09T304					146109 \$ 11.03										3/8	5/32	1/64	SSBCR/L SSSCR/L	E57 E58		
SCMT 32.52-F3P	09T308				149281 \$ 11.03	148830 \$ 11.03			149224 \$ 11.03							3/8	5/32	1/32	SSKCR/L	E71		
SCMT 431-F3P	120404				149319 \$ 14.62											1/2	3/16	1/64				
SCMT 432-F3P	120408		149320 \$ 14.62													1/2	3/16	1/32				

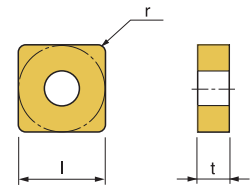
## SNM\_ 90° Negative Turning Inserts



### SNMA



- Flat top geometry for the machining of Cast Iron & Hardened steels



Designation	ISO	Coated Carbide											Cermet			Uncoated Carbide	(inch)			Applicable Holders			
		PT10C	PT20C	PT22C	PT30C	PM10P	MT20C	MT30P	KT05C	KT10C	KT15C	PT10S	PT20S	KTM10U	l	t	r	Holder	Page No.				
SNMA 434	120416												149327 \$ 12.65						1/2	3/16	1/16	MSDNN MSKNR/L MSRNR/L PSKNR/L	E50 E50 E51 E68