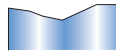
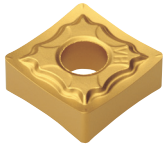
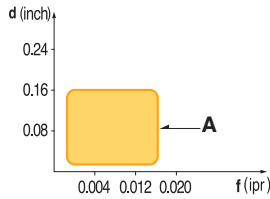


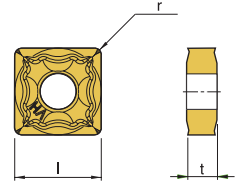
SNMG-A



- Sharp cutting edge generates low cutting force
- Specially designed tough main cutting edge
- Suitable for cutting of low carbon steel, stainless steel, aluminum

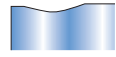
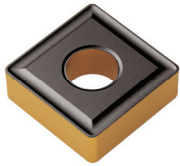


- USE Light & Medium
- Recommendation **A** $d = 0.03 \sim 0.14$ inch
 $f = 0.004 \sim 0.016$ ipr

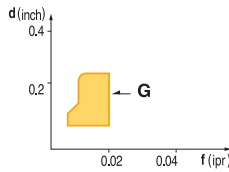


Designation	ISO	Coated Carbide										Cermet		Uncoated Carbide	(inch)			Applicable Holders	
		PT10C	PT20C	PT22C	PT30C	PM10P	MT20C	MT30P	KT05C	KT10C	ST10P	PT10S	PT20S	KTM10U	l	t	r	Holder	Page No.
SNMG 431-A	120404						147710 \$ 12.65								1/2	3/16	1/64	Turning MSDNN E50 MSKNR/L E50 MSRNR/L E51	
SNMG 432-A	120408						147713 \$ 13.03						147714 \$ 10.45	1/2	3/16	1/32	Boring PSKNR/L E68		

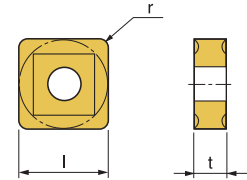
SNMG-G



- Suitable for general cutting condition cutting

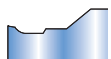
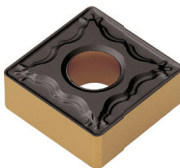


- USE General Cutting
- Recommendation **G** $d = 0.16 \sim 0.4$ inch
 $f = 0.02 \sim 0.04$ ipr

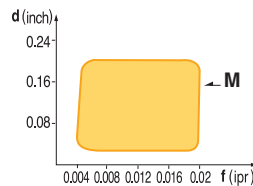


Designation	ISO	Coated Carbide										Cermet		Uncoated Carbide	(inch)			Applicable Holders	
		PT10C	PT20C	PT22C	PT25C	PT30C	MT20C	MT30P	KT05C	KT10C	ST10P	PT10S	PT20S	KTM10U	l	t	r	Holder	Page No.
SNMG 431-G	120404					147741 \$ 12.65									1/2	3/16	1/64	Turning MSDNN E50 MSKNR/L E50 MSRNR/L E51	
SNMG 432-G	120408				149280 \$ 13.03									1/2	3/16	1/32	Boring PSKNR/L E68		
SNMG 642-G	190608					146436 \$ 26.32								3/4	1/4	1/32			
SNMG 866-G	250924					146156 \$ 54.14								1.00	3/8	3/32			

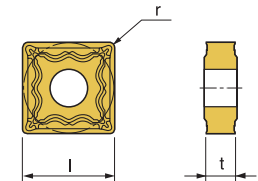
SNMG-M



- Wide available chip control range from medium-finishing to medium-roughing
- Suitable chip breaker for CNC machining



- USE Medium
- Recommendation **M** $d = 0.04 \sim 0.2$ inch
 $f = 0.004 \sim 0.02$ ipr



Designation	ISO	Coated Carbide										Cermet		Uncoated Carbide	(inch)			Applicable Holders	
		PT10C	PT20C	PT22C	PT25C	PT30C	MT20C	MT30P	KT05C	KT10C	ST10P	PT10S	PT20S	KTM10U	l	t	r	Holder	Page No.
SNMG 432-M	120408				149325 \$ 13.28										1/2	3/16	1/32	Turning MSDNN E50 MSKNR/L E50 MSRNR/L E51	
																			Boring PSKNR/L E68

Quick Choice Grade Selection

P Steel	M Stainless Steel	K Cast Iron - Alum	S Heat Resistant Alloy
-------------------	-----------------------------	------------------------------	----------------------------------