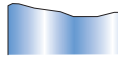
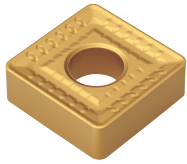
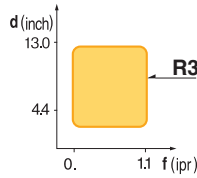


Indexable Cutting Tools

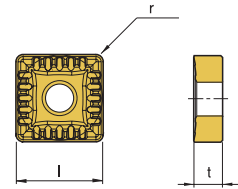
SNMM-R3



- Specially designed toughest cutting edge provides superior cutting performance at deep depth of cut and fast feed rate
- Unique design of dot on cutting edge makes smooth chip flow and reduce cutting force



- USE Heavy Duty
- Recommendation
R3 $d = 0.16 \sim 0.52 \text{ inch}$
 $f = 0.018 \sim 0.06 \text{ ipr}$

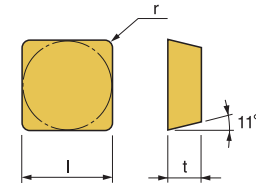
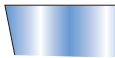
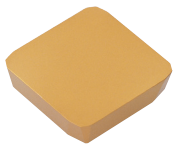


Designation	ISO	Coated Carbide										Cermet		Uncoated Carbide	(inch)			Applicable Holders	
		PT10C	PT20C	PT22C	PT30C	PT40C	MT20C	MT30P	KT05C	KT10C	ST10P	PT10S	PT20S	PM20U	l	t	r	Holder	Page No.
SNMM 643-R3	190612				147703 \$ 26.71										3/4	1/4	3/64	MSDNN MSKNR/L MSRNR/L	E50 E50 E51
SNMM 856-R3	250724				147706 \$ 48.18										1.00	5/16	3/32	PSKNR/L	E68

SP__ 90° Positive Turning Inserts



SPG

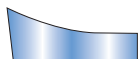
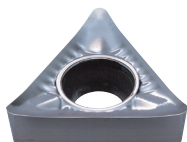


Designation	ISO	Coated Carbide										Cermet		Uncoated Carbide	(inch)			Applicable Holders	
		PT10C	PT20C	PT22C	PT30C	PM10P	MT20C	MT30P	KT05C	KT10C	ST10P	PT10S	PT20S	PM20U	l	t	r	Holder	Page No.
SPG 633	190412													146463 \$ 23.01	3/4	3/16	3/64		

TC_T 60° Positive Turning Inserts

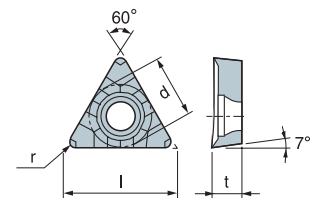


TCGT-AM (AM Chipbreaker is for Aluminum)



- Exclusive chip breaker for aluminum and aluminum alloy

- USE Aluminum Cutting
- Recommendation
AM $d = 0.020 \sim 0.157 \text{ inch}$
 $f = 0.002 \sim 0.020 \text{ ipr}$



Designation	ISO	Coated Carbide										Diamond Coated	Uncoated Carbide	(inch)				Applicable Holders	
		PT10C	PT20C	PT22C	PT30C	PM10P	MT20C	MT30P	KT05C	KT10C	ST10P	ND100	KT10U	l	d	t	r	Holder	Page No.
TCGT 21.51-AM	110204											146120 \$ 15.03	0.433	1/4	3/32	1/64	STFCR/L	E58	
TCGT 21.52-AM	110208											146121 \$ 15.03	0.433	1/4	3/32	1/32	STGCR/L	E59	
TCGT 32.50.5	16T302											146123 \$ 19.01	0.650	3/8	5/32	1/64	STFCR/L	E72	
TCGT 32.51-AM	16T304											146135 \$ 19.01	0.650	3/8	5/32	1/64	CT45°	E142	
TCGT 32.52-AM	16T308											146137 \$ 19.01	0.650	3/8	5/32	1/32			

Quick Choice Grade Selection

P Steel	M Stainless Steel	K Cast Iron - Alum	S Heat Resistant Alloy
------------	----------------------	-----------------------	---------------------------