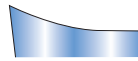
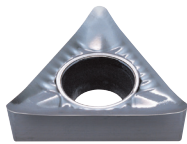
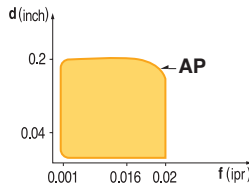


TC_T 60° Positive Turning Inserts

TCGT-AP (AP Chipbreaker is for Aluminum)



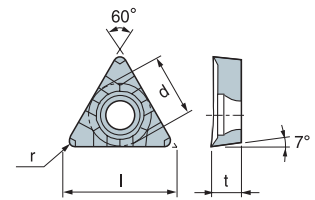
Exclusive chip breaker for aluminum and aluminum alloy



■ USE Aluminum Cutting

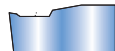
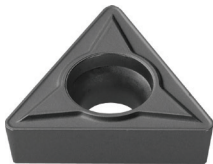
■ Recommendation

AP $d = 0.005 \sim 0.2 \text{ inch}$
 $f = 0.001 \sim 0.02 \text{ ipr}$

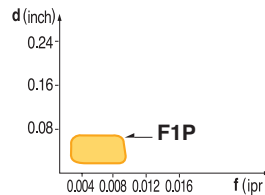


Designation	ISO	Coated Carbide										Diamond Coated	Uncoated Carbide	(inch)				Applicable Holders	
		PT10C	PT20C	PT22C	PT30C	PM10P	MT20C	MT30P	KT05C	KT10C	ST10P			ND100	KT10U	l	d	t	r
TCGT 21.50.5-AP	110202												146504 \$ 15.45	0.433	1/4	3/32	0.008	Turning	
TCGT 21.51-AP	110204												146505 \$ 15.45	0.433	1/4	3/32	1/64	STFCR/L STGCR/L	E58 E59
TCGT 21.52-AP	110208												146506 \$ 15.03	0.433	1/4	3/32	1/32	Boring	E72
TCGT 32.51-AP(K)	16T304												146507 \$ 19.55	0.650	3/8	5/32	1/64	STFCR/L Chamfer	E142
TCGT 32.52-AP(K)	16T308												146508 \$ 19.55	0.650	3/8	5/32	1/32	CT45°	E142

TCGT-F1P



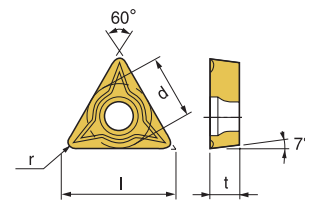
Excellent chip control at wide range of cutting conditions
Suitable for stainless steel cutting



■ USE Medium

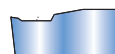
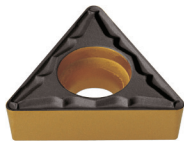
■ Recommendation

F1P $d = 0.004 \sim 0.06 \text{ inch}$
 $f = 0.002 \sim 0.01 \text{ ipr}$

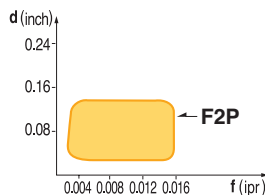


Designation	ISO	Coated Carbide										Cermet		Uncoated Carbide	(inch)				Applicable Holders		
		PT10C	PT20C	PT22C	PM30C	PT30C	MT20C	MT30P	KT05C	KT10C	ST10P	PT10S	PT20S		KT10U	l	d	t	r	Holder	Page No.
TCGT 1.81.51-F1P	090204														146690 \$ 8.55	0.378	7/32	3/32	1/64	Turning	
																				STFCR/L	E58
																				STGCR/L	E59
																				Boring	E72
																				STFCR/L	E72
																				Chamfer	E142
																				CT45°	E142

TCMT-F1P/F2P



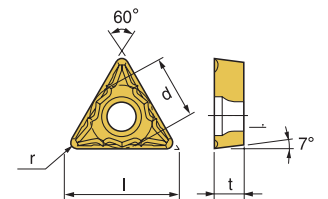
Excellent chip control at wide range of cutting conditions
Suitable for stainless steel cutting



■ USE Medium

■ Recommendation

F2P $d = 0.02 \sim 0.14 \text{ inch}$
 $f = 0.002 \sim 0.016 \text{ ipr}$



Designation	ISO	Coated Carbide										Cermet		(inch)				Applicable Holders	
		PT10C	PT15C	PT20C	PT25C	PM30C	PT30C	MT15C	MT20C	MT30P	KT10C	PT10S	PT20S	l	d	t	r	Holder	Page No.
TCMT 32.50.5-F1P	16T302		149517 \$ 12.82											0.650	3/8	5/32	0.008	Turning	
TCMT 21.50.5-F2P	110202		149514 \$ 10.55											0.433	1/4	3/32	0.008	STFCR/L	E58
TCMT 21.51-F2P	110204		149515 \$ 10.54		149282 \$ 10.54		146138 \$ 10.21	149331 \$ 10.55		146140 \$ 10.21				0.433	1/4	3/32	1/64	STFCR/L	E72
TCMT 21.52-F2P	110208		149516 \$ 10.54		149286 \$ 10.54	146142 \$ 10.21								0.433	1/4	3/32	1/32	Chamfer	E142
TCMT 32.51-F2P	16T304		149518 \$ 12.64		149232 \$ 12.64									0.650	3/8	5/32	1/64	CT45°	E142
TCMT 32.52-F2P	16T308		149343 \$ 12.64		149362 \$ 12.64	146613 \$ 12.85		149263 \$ 12.64						0.650	3/8	5/32	1/32		