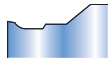
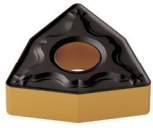
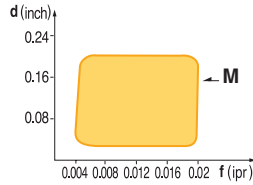




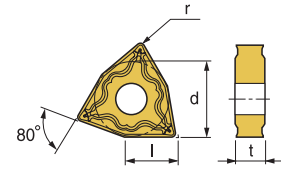
WNMG-M/M1



- Wide available chip control range from medium-finishing to medium-roughing
- Suitable chip breaker for CNC machining

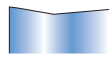
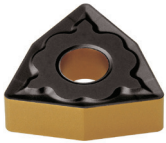


- USE Medium
- Recommendation **M** $d = 0.04 \sim 0.2 \text{ inch}$
 $f = 0.004 \sim 0.02 \text{ ipr}$

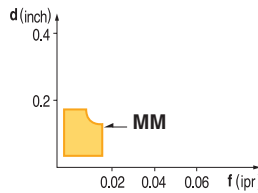


Designation	ISO	Coated Carbide										Cermet		Uncoated Carbide	(inch)				Applicable Holders	
		PT10C	PT15C	PT20C	PT25C	PT30C	PTM50C	MT30P	KT10C	ST10P	PT10S	PT20S	KT10U	l	d	t	r	Holder	Page No.	
WNMG 431-M	080404		149417 \$ 13.03		149326 \$ 13.24									0.343	1/2	3/16	1/64	Turning MwLNR/L	E54	
WNMG 432-M	080408		149335 \$ 12.86		149248 \$ 13.28	147695 \$ 12.65								0.343	1/2	3/16	1/32			Boring MwLNR/L
WNMG 431-M1	080404				149423 \$ 13.04									0.343	1/2	3/16	1/64			
WNMG 432-M1	080408		149419 \$ 13.03		149425 \$ 13.03		145639 \$ 16.11	145660 \$ 12.65						0.343	1/2	3/16	1/32			
WNMG 433-M1	080412		149421 \$ 13.03		149427 \$ 13.03									0.343	1/2	3/16	3/64			

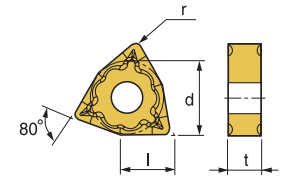
WNMG-MM



- Excellent choice for a variety of steels including stainless steel

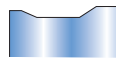
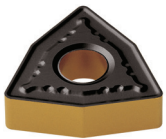


- USE Steels/Stainless Steels
- Recommendation **MM** $d = 0.04 \sim 0.16 \text{ inch}$
 $f = 0.004 \sim 0.016 \text{ ipr}$

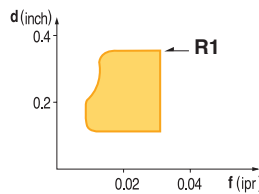


Designation	ISO	Coated Carbide										Cermet		Uncoated Carbide	(inch)				Applicable Holders	
		PT10C	PT20C	PT22C	PT25C	MT15C	MT20C	MT30P	KT05C	KT10C	ST10P	PT10S	PT20S	KTM10U	l	d	t	r	Holder	Page No.
WNMG 432-MM	080408				149249 \$ 13.24	149318 \$ 13.24		146188 \$ 12.65							0.343	1/2	3/16	1/32	Turning MwLNR/L	E54
																		Boring MwLNR/L		

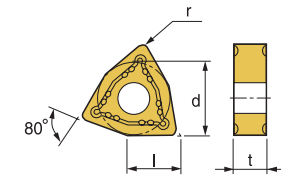
WNMG-R1



- Excellent chip control at deep depth of cut and fast feed rate
- Strong cutting edge makes excellent cutting performance at intermittent cutting



- USE Roughing
- Recommendation **R1** $d = 0.1 \sim 0.28 \text{ inch}$
 $f = 0.010 \sim 0.026 \text{ ipr}$



Designation	ISO	Coated Carbide										Cermet		Uncoated Carbide	(inch)				Applicable Holders	
		PT10C	PT20C	PT22C	PT25C	PT30C	PT40C	MT30P	KT05C	KT10C	ST10P	PT10S	PT20S	KTM10U	l	d	t	r	Holder	Page No.
WNMG 432-R1	080408				149277 \$ 13.03	146857 \$ 13.03	146194 \$ 12.65								0.343	1/2	3/16	1/32	Turning MwLNR/L	E54
WNMG 433-R1	080412					146862 \$ 12.65	146199 \$ 12.65							0.343	1/2	3/16	1/64	Boring MwLNR/L		