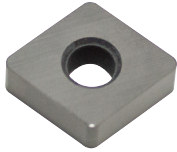


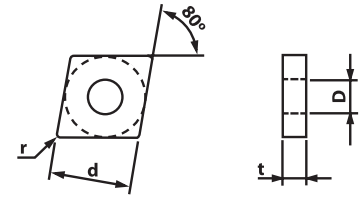
CERAMIC Inserts

CNGA

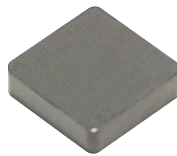
*For additional technical information see page E163-164



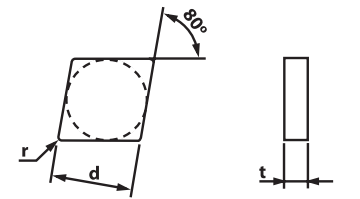
Designation	ISO	CERAMIC			(inch)			Applicable Holders	
		GP100	GP300	S400	d	t	r	Holder	Page No.
CNGA 431	120404	149416	149418		0.500	0.187	0.016	Turning	E48
		\$ 11.18	\$ 11.74						
CNGA 432	120408	149420	149422		0.500	0.187	0.031	MCKNR/L	E48
		\$ 15.90	\$ 14.48						
CNGA 433	120412	149424	149426		0.500	0.187	0.047	MCRNR/L	E49
		\$ 11.18	\$ 14.48						
CNGA 434	120416	149428	149430		0.500	0.187	0.063	Boring	E64
		\$ 11.18	\$ 11.74						
CNGA 452	120708	149432	149434		0.500	0.313	0.031	MCLNR/L	E67
		\$ 13.54	\$ 14.27						
CNGA 453	120712	149436	149438		0.500	0.313	0.047	PCLNR/L	E67
		\$ 13.54	\$ 14.27						



CNGN



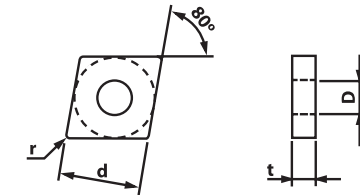
Designation	ISO	CERAMIC			(inch)			Applicable Holders	
		GP100	GP300	S400	d	t	r	Holder	Page No.
CNGN 431	150404	149400	149402		0.500	0.187	0.016		
		\$ 11.18	\$ 11.74						
CNGN 432	150408	149404	149406		0.500	0.187	0.031		
		\$ 11.18	\$ 11.74						
CNGN 433	150412	149408	149410		0.500	0.187	0.047		
		\$ 11.18	\$ 11.74						
CNGN 434	150416	149412	149414		0.500	0.187	0.063		
		\$ 11.18	\$ 11.74						



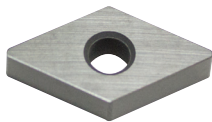
CNMA



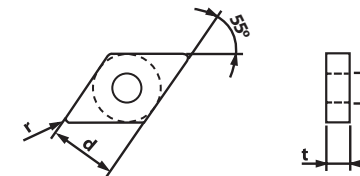
Designation	ISO	CERAMIC			(inch)			Applicable Holders	
		GP100	GP300	S400	d	t	r	Holder	Page No.
CNMA 432	150404			149558	0.500	0.187	0.031	Turning	E48
				\$ 18.85					
CNMA 433	150412			149592	0.500	0.187	0.047	MCKNR/L	E48
				\$ 20.60					
CNMA 434	150416			149562	0.500	0.187	0.063	MCLNR/L	E64
				\$ 18.85					
CNMA 544	160416			149564	0.625	0.250	0.063	MCRNR/L	E49
				\$ 27.55					



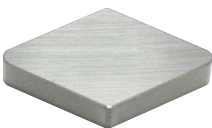
DNGA



Designation	ISO	CERAMIC			(inch)			Applicable Holders	
		GP100	GP300	S400	d	t	r	Holder	Page No.
DNGA 431	150404	149448	149450		0.500	0.187	0.016	Turning	E49
		\$ 19.66	\$ 16.74						
DNGA 432	150408	149452	149454		0.500	0.187	0.031	Boring	E67
		\$ 15.97	\$ 19.66						
DNGA 441	150604	149456	149458		0.500	0.250	0.016	PDUNR/L	E68
		\$ 16.94	\$ 17.82						
DNGA 442	150608	149460	149462		0.500	0.250	0.031		
		\$ 16.94	\$ 15.97						
DNGA 443	150612	149464	149466		0.500	0.250	0.047		
		\$ 16.94	\$ 17.82						



DNGN



Designation	ISO	CERAMIC			(inch)			Applicable Holders	
		GP100	GP300	S400	d	t	r	Holder	Page No.
DNGN 432	150408	149440			0.500	0.187	0.031		
		\$ 15.97							
DNGN 433	150412	149442			0.500	0.187	0.047		
		\$ 15.97							
DNGN 442	150608	149444			0.500	0.250	0.031		
		\$ 16.94							
DNGN 443	150612	149446			0.500	0.250	0.047		
		\$ 16.94							

