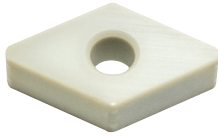


CERAMIC Inserts

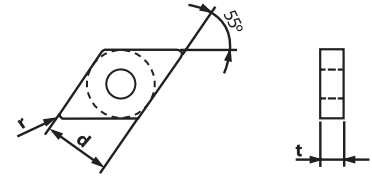


DNMA

*For additional technical information see page E163-164



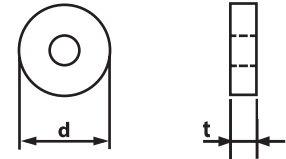
Designation	ISO	CERAMIC			(inch)			Applicable Holders	
		GP100	GP300	S400	d	t	r	Holder	Page No.
DNMA 443	150612			149576 \$ 29.72	0.500	0.250	0.047	Turning MDJNR/L Boring PDSNR/L PDUNR/L	E49 E67 E68



RNGA



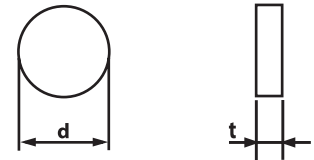
Designation	ISO	CERAMIC			(inch)			Applicable Holders	
		GP100	GP300	S400	d	t	r	Holder	Page No.
RNGA 43	120400	149480 \$ 12.82	149482 \$ 13.49		0.500	0.187			



RNG



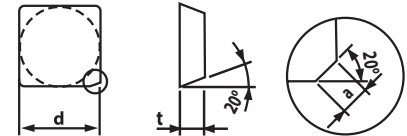
Designation	ISO	CERAMIC			(inch)			Applicable Holders	
		GP100	GP300	S400	d	t	r	Holder	Page No.
RNG 32	090300	149470 \$ 9.73			0.375	0.125			
RNG 33	090400	149472 \$ 10.25	149474 \$ 10.76		0.375	0.187			
RNG 43	120400	149476 \$ 12.82	149478 \$ 10.70		0.500	0.187			



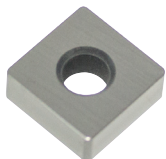
SEKN (For Milling)



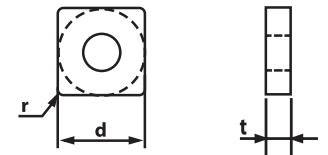
Designation	ISO	CERAMIC			(inch)			Applicable Holders	
		GP100	GP300	S300	d	t	r	Holder	Page No.
SEKN 42 AFTN	1203AFTN			149556 \$ 25.60	0.500	0.125	0.079		



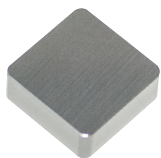
SNGA



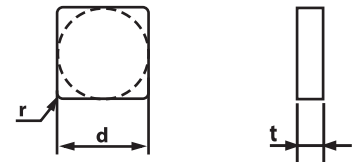
Designation	ISO	CERAMIC			(inch)			Applicable Holders	
		GP100	GP300	S400	d	t	r	Holder	Page No.
SNGA 432	120408	149586 \$ 10.20			0.500	0.187	0.031	Turning MSDNN MSKNR/L MSRR/L	E51 E50 E51
SNGA 433	120412	149588 \$ 10.20	149590 \$ 10.71		0.500	0.187	0.047	Boring PSKNR/L	E68



SNGN



Designation	ISO	CERAMIC			(inch)			Applicable Holders	
		GP100	GP300	S400	d	t	r	Holder	Page No.
SNGN 432	120408	149580 \$ 10.20			0.500	0.187	0.031		
SNGN 433	120412	149582 \$ 10.20	149584 \$ 10.71		0.500	0.187	0.047		



SNMA



Designation	ISO	CERAMIC			(inch)			Applicable Holders	
		GP100	GP300	S400	d	t	r	Holder	Page No.
SNMA 433	120412			149560 \$ 18.85	0.500	0.187	0.047	Turning MSDNN MSKNR/L	E51 E50
SNMA 434	120416			149594 \$ 15.30	0.500	0.187	0.063	Boring PSKNR/L	E51 E68

