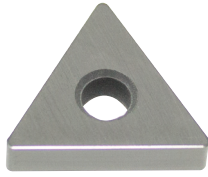


# CERAMIC Inserts

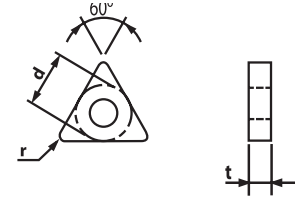


## TNGA

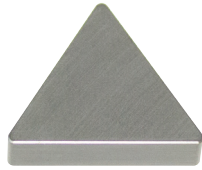
\*For additional technical information see page E163-164



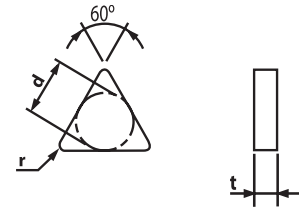
Designation	ISO	CERAMIC			(inch)			Applicable Holders	
		GP100	GP300	S400	d	t	r	Holder	Page No.
TNGA 222	110308	149403 \$ 8.76	149401 \$ 9.22		0.250	0.125	0.031	<b>Turning</b> MTCNN E51 MTENN E52 MTFNR/L E52 MTGNR/L E53 MTJNR/L E53 <b>Boring</b> MTFNR/L E65 MTUNR/L E65 PTFNR/L E69	
TNGA 331	160404	149520 \$ 9.63	149522 \$ 10.09		0.375	0.187	0.016		
TNGA 332	160408	149524 \$ 9.63	149526 \$ 8.76		0.375	0.187	0.031		
TNGA 333	160412	149528 \$ 9.63	149529 \$ 10.09		0.375	0.187	0.047		
TNGA 432	220408	149530 \$ 17.04			0.500	0.187	0.031		
TNGA 433	220412	149532 \$ 14.73			0.500	0.187	0.047		
TNGA 434	220416	149534 \$ 14.73			0.500	0.187	0.063		



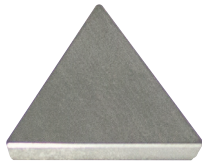
## TNG



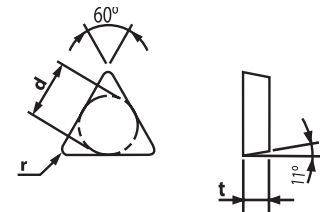
Designation	ISO	CERAMIC			(inch)			Applicable Holders	
		GP100	GP300	S400	d	t	r	Holder	Page No.
TNG 321	160304	149500 \$ 9.37			0.375	0.125	0.016		
TNG 332	160408	149502 \$ 9.63	149504 \$ 9.21		0.375	0.187	0.031		
TNG 333	160412	149506 \$ 9.63			0.375	0.187	0.047		
TNG 431	220404	149508 \$ 14.73			0.500	0.187	0.016		
TNG 432	220408	149510 \$ 14.73			0.500	0.187	0.031		
TNG 433	220412	149512 \$ 14.73			0.500	0.187	0.047		



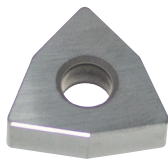
## TPG



Designation	ISO	CERAMIC			(inch)			Applicable Holders	
		GP100	GP300	S400	d	t	r	Holder	Page No.
TPG 221	110304	149536 \$ 12.57	149538 \$ 13.18		0.250	0.125	0.016		
TPG 222	110408	149540 \$ 12.57	149542 \$ 13.18		0.250	0.125	0.031		
TPG 321	160304	149544 \$ 13.39	149546 \$ 14.06		0.375	0.125	0.016		
TPG 322	160308	149548 \$ 13.39	149550 \$ 11.80		0.375	0.125	0.031		
TPG 323	160312	149552 \$ 13.39	149554 \$ 14.06		0.375	0.125	0.047		



## WNGA



Designation	ISO	CERAMIC			(inch)			Applicable Holders	
		GP100	GP300	S400	d	t	r	Holder	Page No.
WNGA 432	080408		149628 \$ 16.83	149630 \$ 25.65	0.500	0.187	0.031		
WNGA 433	080412		149632 \$ 16.43	149634 \$ 25.65	0.500	0.187	0.047		

