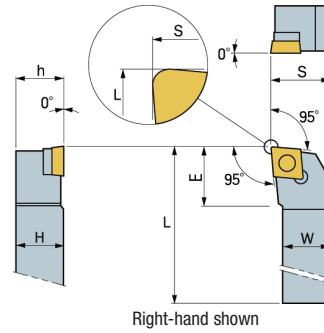
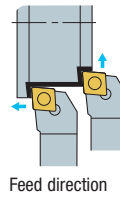
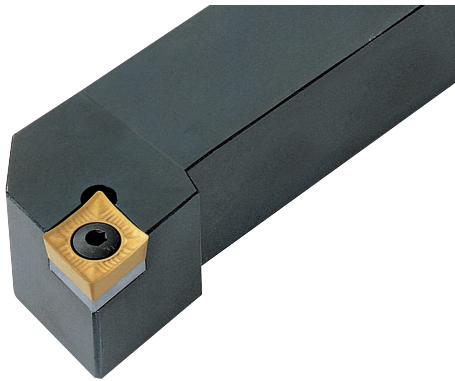
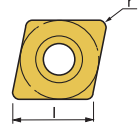
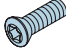

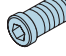





## SCLCR/L

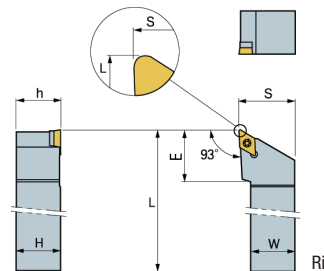
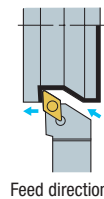
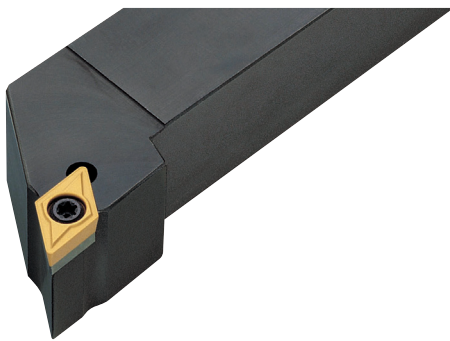


Right-hand shown

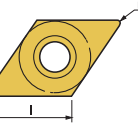

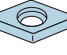
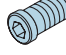

Ref	Holder Style		Application		Inserts						Parts				
Comment	L Style, Approach Angle 95°		Turning, Facing												
SCLCR/L	Code #		Code #								H	W	L	S	h
	Right	Price \$	Left	Price \$											
06-2J	146981	63.40	147291	71.93	0.375	0.375	2.750	0.500	0.375	0.394	CC □ T 21.5 □	FTKA02565 146930 \$ 10.72	-	-	TW07P 146939 \$ 12.31
08-2A	146784	87.17	146785	60.89	0.500	0.500	4.000	0.625	0.500	0.490	CC □ T 21.5 □	-	-	-	-
10-3A	146257	67.28	146787	89.20	0.625	0.625	4.000	0.750	0.625	0.630	CC □ T 32.5 □	FTGA03508 146931 \$ 10.90	-	-	TW15P 146940 \$ 12.82
12-3B	146788	108.73	147215	94.85	0.750	0.750	4.500	1.000	0.750	0.630		-	-	-	-
16-3D	146352	73.80	146353	113.36	1.000	1.000	6.000	1.250	1.000	0.670		-	-	-	-
12-4B	145994	125.36	146789	108.73	0.750	0.750	4.500	1.000	0.750	0.984	CC □ T 43 □	FTGA0411F 146944 \$ 10.01	SC42S 146936 \$ 10.92	SHXN0610F 145998 \$ 16.96	TW15P 146940 \$ 12.82
16-4D	146790	133.86	146791	116.11	1.000	1.000	6.000	1.250	1.000	1.024		-	-	-	-

► P. E34

## SDJCR/L



Right-hand shown

Ref	Holder Style		Application		Inserts						Parts				
Comment	J Style, Approach Angle 93°		Turning, Copying												
SDJCR/L	Code #		Code #								H	W	L	S	h
	Right	Price \$	Left	Price \$											
12-3B	145798	119.51	147146	102.89	0.750	0.750	4.500	1.000	0.750	0.945	DC □ T 32.5 □	FTGA03512 146933 \$ 10.90	SD32S 146937 \$ 11.02	SHXN0509F 146935 \$ 16.68	TW15P 146940 \$ 12.82
16-3D	145985	113.36	147230	113.36	1.000	1.000	6.000	1.250	1.000	1.142		-	-	-	-

► P. E14, E35