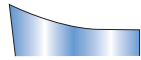
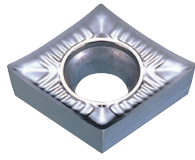
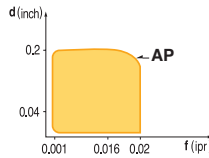




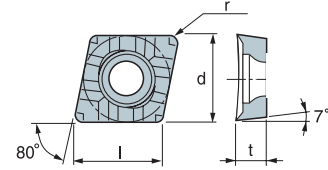
CCGT-AP (AP Chipbreaker is for Aluminum)



Exclusive chip breaker for aluminum and aluminum alloy

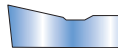
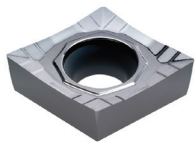


- USE Aluminum Cutting
- Recommendation
AP $d = 0.005 \sim 0.2$ inch
 $f = 0.001 \sim 0.02$ ipr



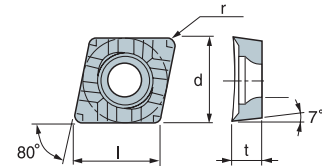
		Coated Carbide										Diamond Coated	Uncoated Carbide	(inch)				Applicable Holders	
Designation	ISO	PT10C	PT20C	PT22C	PT30C	PM10P	MT20C	MT30P	KT05C	KT10C	ST10P	ND100	KT10U	l	d	t	r	Holder	Page No.
CCGT 21.51-AP	060204												146024 \$ 15.18	0.256	1/4	3/32	1/64	Turning SCACR/L	E55
CCGT 32.50.5-AP	09T302												146027 \$ 17.79	0.382	3/8	5/32	0.008		
CCGT 32.51-AP	09T304											146701 \$ 39.89	146011 \$ 17.79	0.382	3/8	5/32	1/64		
CCGT 32.52-AP	09T308												146012 \$ 17.79	0.382	3/8	5/32	1/32		
CCGT 431-AP	120404												146627 \$ 20.62	0.508	1/2	3/16	1/64		
CCGT 432-AP	120408												146023 \$ 20.62	0.508	1/2	3/16	1/32		

CCGT-AM (AM Chipbreaker is for Aluminum)



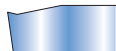
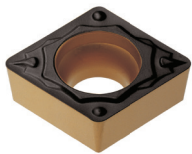
- High stability of cutting edge secures great performance in high speed and interrupted cutting
- High speed of medium and interrupted operation

- USE Aluminum Cutting
- Recommendation
 $d = 0.020 \sim 0.157$ inch
 $f = 0.002 \sim 0.020$ ipr

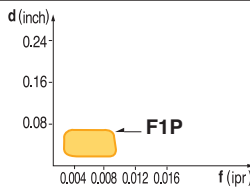


		Coated Carbide										Cermet	Uncoated Carbide	(inch)				Applicable Holders		
Designation	ISO	PT10C	PT20C	PT22C	PT30C	PM10P	MT20C	MT30P	KT05C	KT10C	ST10P	PT10S	PT20S	KTM10U	l	d	t	r	Holder	Page No.
CCGT 21.50.5-AM	060202													145661 \$ 14.76	0.256	1/4	3/32	0.008	Turning SCACR/L	E55
CCGT 21.51-AM	060204													145681 \$ 14.76	0.256	1/4	3/32	1/64		
CCGT 21.52-AM	060208													145682 \$ 14.76	0.256	1/4	3/32	1/32		
CCGT 32.50.5-AM	09T302													145662 \$ 17.29	0.382	3/8	5/32	0.008		
CCGT 32.51-AM	09T304													145683 \$ 17.29	0.382	3/8	5/32	1/64		
CCGT 430.5-AM	120402													145684 \$ 20.03	0.508	1/2	3/16	0.008		
CCGT 431-AM	120404													145685 \$ 20.03	0.508	1/2	3/16	1/64		
CCGT 432-AM	120408													145686 \$ 20.03	0.508	1/2	3/16	1/32		

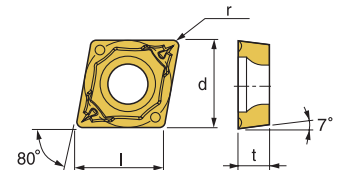
CCGT-F1P



- Excellent chip control at shallow depth of cut and low feed rate
- Excellent surface finish of workpiece due to reduced cutting force
- Suitable for fine boring



- USE Finishing
- Recommendation
F1P $d = 0.004 \sim 0.06$ inch
 $f = 0.002 \sim 0.01$ ipr



		Coated Carbide										Cermet	Uncoated Carbide	(inch)				Applicable Holders		
Designation	ISO	PT10C	PT20C	PT22C	PT25C	PT30C	MT20C	MT30P	KT05C	KT10C	ST10P	PT10S	PT20S	KTM10U	l	d	t	r	Holder	Page No.
CCGT 32.50.5-F1P	09T302							145626 \$ 18.39			145627 \$ 18.39				0.382	3/8	5/32	0.008	Turning SCACR/L	E55
CCGT 32.51-F1P	09T304				149289 \$ 19.20	145691 \$ 18.39							149177 \$ 15.36	0.382	3/8	5/32	1/64	Boring SCLCR/L		
CCGT 32.52-F1P	09T308						145693 \$ 18.39							0.382	3/8	5/32	1/32			

Quick Choice Grade Selection

P Steel	M Stainless Steel	K Cast Iron - Alum	S Heat Resistant Alloy
-------------------	-----------------------------	------------------------------	----------------------------------