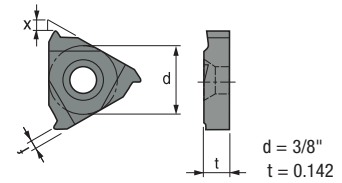
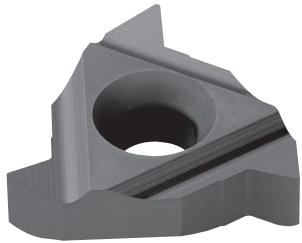


Indexable Cutting Tools

External Threading Inserts



ECTR

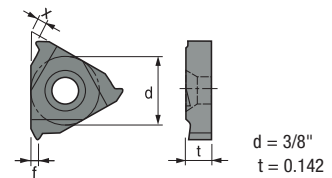
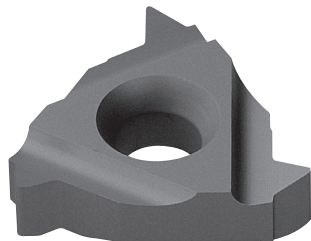


Designation	Coated Carbide								Uncoated Carbide			(inch)					Applicable Holders		
	PT10C	PT15C	PT20C	PT30C	PM30P	MT20C	MT30P	KT05C	KT15P	PT10S	PTM30U	KTM10U	Pitch	f	θ	x	Cutting Edge	Holder	Page No.
ECTR 20UN					146524 \$ 37.73								20	0.039	60°	0.051	A	ETH3---	E89
ECTR 16UN					146489 \$ 30.51								16	0.039	60°	0.051	A		
ECTR 12UN					146250 \$ 30.51								12	0.047	60°	0.051	A		
ECTR 10UN					146249 \$ 37.73								10	0.059	60°	0.059	A		
ECTR 08UN					146248 \$ 37.73								08	0.059	60°	0.059	A		
ECTR 300 8-28					146597 \$ 38.84								28-8	0.039	60°	0.051	D		

Internal Threading Inserts



ICTR



Designation	Coated Carbide								Uncoated Carbide			(inch)					Applicable Holders		
	PT10C	PT15C	PT20C	PT30C	PM30P	MT20C	MT30P	KT05C	KT15P	PT10S	PTM30U	KTM10U	Pitch	f	θ	x	Cutting Edge	Holder	Page No.
ICTR 16UN					146514 \$ 31.42								16	0.039	60°	0.051	A	ITH3---	E89
ICTR 12UN					146253 \$ 47.27								12	0.047	60°	0.051	A		
ICTR 10UN					146252 \$ 37.73								10	0.059	60°	0.059	A		
ICTR 300 8-28					146610 \$ 38.84								28-8	0.039	60°	0.051	D		

■ Cutting Edge Type



Quick Choice Grade Selection

P Steel	M Stainless Steel	K Cast Iron - Alum	S Heat Resistant Alloy
------------	----------------------	-----------------------	---------------------------