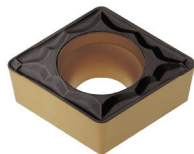
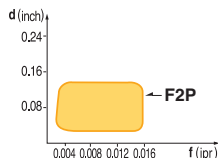


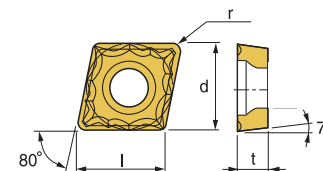
CCMT-F1P/F2P



- Excellent chip control at wide range of cutting conditions
- Suitable for stainless steel cutting

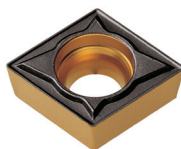


- USE Medium
- Recommendation
F2P $d = 0.02 \sim 0.14$ inch
 $f = 0.002 \sim 0.016$ ipr

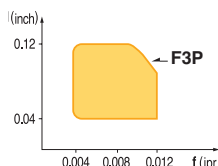


Designation	ISO	Coated Carbide											Cermet	Uncoated Carbide	(inch)				Applicable Holders	
		PT10C	PT15C	PT20C	PT25C	PT30C	MT15C	MT20C	MT30P	KT05C	KT10C	ST10P			PT20S	KTM10U	l	d	t	r
CCMT 21.50.5-F1P	060202														0.256	1/4	3/32	0.008	Turning SCACR/L Boring SCLCR/L	E55 E69
CCMT 32.51-F1P	09T304				149257 \$ 11.22									0.382	3/8	5/32	1/64			
CCMT 21.50.5-F2P	060202		149494 \$ 10.70		149252 \$ 10.71									0.256	1/4	3/32	0.008	Turning SCACR/L Boring SCLCR/L	E55 E69	
CCMT 21.51-F2P	060204		149495 \$ 10.71		149227 \$ 10.70		149255 \$ 10.71					148450 \$ 10.41		0.256	1/4	3/32	1/64			
CCMT 21.52-F2P	060208		149496 \$ 10.70		149497 \$ 10.71									0.256	1/4	3/32	1/32			
CCMT 32.50.5-F2P	09T302		149498 \$ 11.03									148452 \$ 10.74		0.382	3/8	5/32	0.008			
CCMT 32.51-F2P	09T304		149499 \$ 11.03		149220 \$ 11.03	149010 \$ 11.03	149238 \$ 11.03				145698 \$ 10.74		148453 \$ 11.03	0.382	3/8	5/32	1/64			
CCMT 32.52-F2P	09T308		149501 \$ 11.03		149221 \$ 11.03	148549 \$ 11.03	149247 \$ 11.03						148454 \$ 11.03	0.382	3/8	5/32	1/32			
CCMT 431-F2P	120404					145718 \$ 14.20								0.508	1/2	3/16	1/64			
CCMT 432-F2P	120408				149299 \$ 14.62		149337 \$ 14.62							0.508	1/2	3/16	1/32			

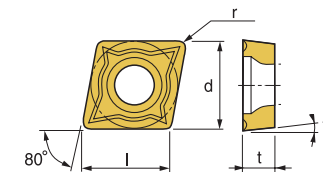
CCMT-F3P



- Suitable for intermittent cutting and cast iron machining
- Good surface finish due to low cutting force
- Suitable for both boring and outer diameter turning

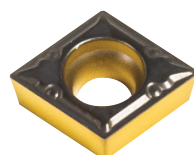


- USE Medium
- Recommendation
F3P $d = 0.04 \sim 0.12$ inch
 $f = 0.004 \sim 0.012$ ipr



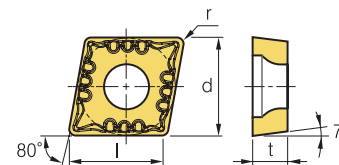
Designation	ISO	Coated Carbide											Cermet	Uncoated Carbide	(inch)				Applicable Holders	
		PT10C	PT20C	PT22C	PT25C	PT30C	MT20C	MT30P	KT05C	KT10C	PT10S	PT20S			KT10U	PM20U	l	d	t	r
CCMT 21.51-F3P	060204				149241 \$ 10.70	145735 \$ 10.70									0.256	1/4	3/32	1/64	Turning SCACR/L Boring SCLCR/L	E55 E69
CCMT 21.52-F3P	060208					145750 \$ 10.70								0.256	1/4	3/32	1/32			
CCMT 32.51-F3P	09T304				149230 \$ 11.03	145774 \$ 11.03								0.382	3/8	5/32	1/64	Turning SCACR/L Boring SCLCR/L	E55 E69	
CCMT 32.52-F3P	09T308				149242 \$ 11.03		145797 \$ 11.03							0.382	3/8	5/32	1/32			
CCMT 431-F3P	120404				149262 \$ 14.62	145894 \$ 14.20								0.508	1/2	3/16	1/64			
CCMT 432-F3P	120408				149287 \$ 14.62	146159 \$ 14.62								0.508	1/2	3/16	1/32			

CCMT-FVL



- Stable chip control in high toughness material; low carbon steel, pipe steel and steel plates
- Improved chip control for facing, copy machining, and better surface finish

- USE Finishing
- Recommendation
FVL $d = 0.008 \sim 0.059$ inch
 $f = 0.004 \sim 0.014$ ipr



Designation	ISO	Coated Carbide											Cermet	Uncoated Carbide	(inch)				Applicable Holders	
		PT10C	PT15C	PT20C	PT25C	PT30C	MT15C	MT20C	MT30P	KT05C	KT10C	ST10P			PT20S	KTM10U	l	d	t	r
CCMT 21.50.5-FVL	060202		149468 \$ 10.88												0.256	1/4	3/32	0.008	Turning SCACR/L Boring SCLCR/L	E55 E69