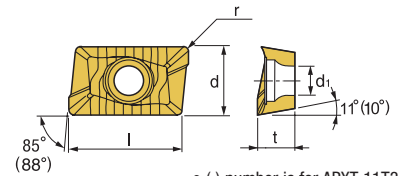




APXT 11T3 & 1604

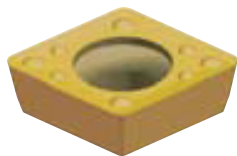


Features
Excellent free cutting geometries
for a variety of applications

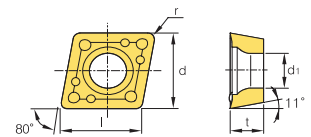


Designation	Coated Carbide										Uncoated Carbide		(inch)					Applicable Cutter	
	PM10C	PM25C	PM30C	PM30.1P	PM40P	KM20C	MM30P	MT30P	SM20P	PM20U	KTM10U	l	d	t	r	d1	Cutter	Page No.	
APXT 11T3 PDSR-F2		146796 \$ 17.65					148485 \$ 17.36					0.445	0.260	0.142	0.020	0.112	AP 11	E122-123	
APXT 11T3 PDSR-M		146356 \$ 17.36		146110 \$ 17.64			147340 \$ 17.36			146357 \$ 13.74		0.445	0.260	0.142	0.020	0.112	APFM 11	E130-132	
APXT 11T312R-M		146359 \$ 17.65										0.445	0.260	0.142	3/64	0.112			
APXT 11T316R-M					147379 \$ 17.65							0.445	0.260	0.142	1/16	0.112			
APXT 11T3 PDR-A										146358 \$ 14.15		0.445	0.260	0.142	0.020	0.112			
APXT 1604 PDSR-F2						147408 \$ 23.34			148502 \$ 17.20			0.650	0.376	0.227	1/32	0.175	AP 16	E127-123	
APXT 1604 PDSR-M		148178 \$ 21.50	148521 \$ 24.04				147338 \$ 21.50					0.650	0.376	0.227	1/32	0.175	APFM 16	E130-132	
APXT 160416R-M			147156 \$ 23.37							146167 \$ 18.72		0.650	0.376	0.227	1/16	0.175			
APXT 160416R PDSR-M		146553 \$ 21.50				147468 \$ 23.34						0.650	0.376	0.227	1/16	0.175			
APXT 160432R-M		147720 \$ 21.50										0.650	0.376	0.227	1/8	0.175			

CPMT-M

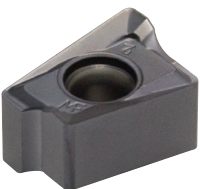


Features
Stronger geometry for roughing
applications in a variety of steels

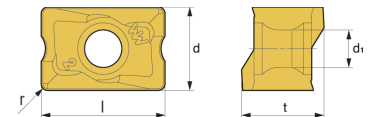


Designation	Coated Carbide										Uncoated Carbide		(inch)					Applicable Cutter	
	PTM50P	PM10P	PM25C	PM30P	PM40P	PC210F	KM20C	MM30P	PC9530	SM20P	PM20U	KTM10U	l	d	t	r	d1	Cutter	Page No.
CPMT09T308-M				147111 \$ 11.66									0.381	3/8	0.156	1/32	0.173	TSC	E144

LNEX-F2/M



Features
Stronger geometry for roughing
applications in a variety of steels



Designation	Coated Carbide										Uncoated Carbide		(inch)					Applicable Cutter	
	PTM50P	PT30P	PM25C	PM30P	PM35P	PM40P	KM10P	MM30P	PC9530	SM20P	PM20U	KTM10U	l	d	t	r	d1	Cutter	Page No.
LNEX100605PNR-F2							148594 \$ 26.78						0.391	0.258	0.258	3/128	0.318	End Mill	
LNEX100605PNR-M							148612 \$ 26.78						0.391	0.258	0.258	3/128	0.318	DS4	E128
LNEX151008PNR-F2							148619 \$ 33.19						0.594	0.391	0.391	1/32	0.177	Face Mill	E135

Quick Choice Grade Selection

P Steel	M Stainless Steel	K Cast Iron - Alum	S Heat Resistant Alloy
------------	----------------------	-----------------------	---------------------------