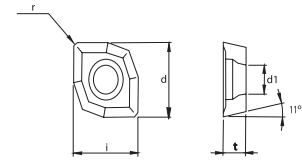




NPMT-MD Drilling Insert

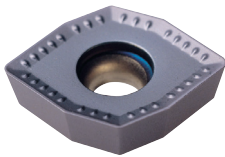


Features
Excellent geometry for a variety of steels and cast iron

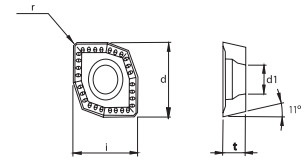


Designation	Coated Carbide										Uncoated Carbide		(inch)					Applicable Cutter	
	PTM50P	PM10P	PM25C	PM30P	PM40P	PC210F	KM20C	MM30P	PC9530	SM20P	PM20U	KTM10U	l	d	t	r	d1	Cutter	Page No.
NPMT252808-MD			147928 \$ 16.87									0.366	0.362	0.130	0.031	0.134	PRO-NP Drill	E148	
NPMT293208-MD			147929 \$ 16.38									0.413	0.409	0.130	0.031	0.134			

NPMT-SD Drilling Insert

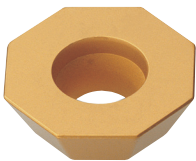


Features
Excellent geometry for stainless steel

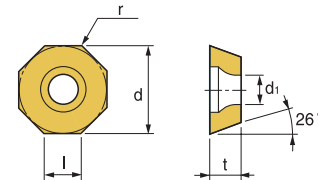


Designation	Coated Carbide										Uncoated Carbide		(inch)					Applicable Cutter	
	PTM50P	PM10P	PM25C	PM30P	PM40P	PC210F	KM20C	MM30P	PC9530	SM20P	PM20U	KTM10U	l	d	t	r	d1	Cutter	Page No.
NPMT252808-SD								147933 \$ 16.87					0.366	0.362	0.130	0.031	0.134	PRO-NP Drill	E148
NPMT293208-SD								147934 \$ 16.38					0.413	0.409	0.130	0.031	0.134		
NPMT334008-SD								147935 \$ 17.01					0.512	0.508	0.156	0.031	0.157		
NPMT415508-SD								147936 \$ 20.58					0.602	0.598	0.187	0.031	0.177		

OFCW



Features
Flat top geometry for more difficult applications

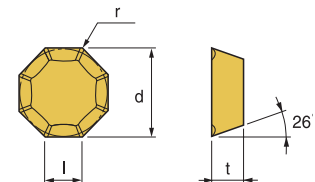


Designation	Coated Carbide										Cermet	Uncoated Carbide		(inch)					Applicable Cutter	
	PM10C	PM25C	PM30C	PM30P	PM35P	PM40P	KM20C	MM30P	MT30P	PT30S	PTM30U	KTM10U	l	d	t	r	d1	Cutter	Page No.	
OFCW 05T3SN		146841 \$ 22.56											0.205	1/2	5/32	0.020	0.173	OKT MAX	E134	

OFKR-F2, M, A



Features
Excellent geometries for a variety of materials



Designation	Coated Carbide										Cermet	Uncoated Carbide		(inch)					Applicable Cutter	
	PM10C	PM25C	PM30C	PM30P	PM35P	PM40P	KM20C	MM30P	MT30P	PT30S	PTM30U	KTM10U	l	d	t	r	d1	Cutter	Page No.	
OFKR 0704SN-F2							147974 \$ 23.95						0.291	0.709	3/16	0.020				
OFKR 070408SN-M		146417 \$ 26.95						147759 \$ 26.21					0.291	0.709	3/16	0.031				
OFKR 0704N-A											146303 \$ 20.88		0.291	0.709	3/16	0.020				