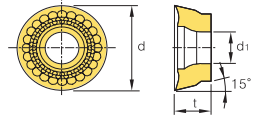




RDKT-F2/M



Features
Excellent geometries for a variety of materials

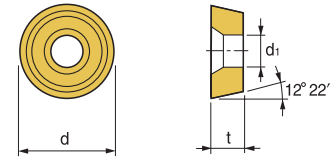


Designation	Coated Carbide										Uncoated Carbide		(inch)			Applicable Cutter		
	PTM50P	PM25C	PM30C	PM30P	PM35P	PM40P	KM20C	MM30P	MT30P	SM20P	PM20U	KTM10U	d	t	d1	Cutter	Page No.	
RDKT10T3MO-F2				148340 \$ 13.48				146896 \$ 13.12					25/64	0.156	0.152	End Mill BMSS E133 Face Mill BMSC E133		
RDKT1204MO-F2							146998 \$ 16.78						15/32	0.187	0.177			
RDKT10T3MO-M			147130 \$ 13.48				146961 \$ 13.12		146946 \$ 13.48				25/64	0.156	0.152			
RDKT1204MO-M	146552 \$ 16.78	145614 \$ 14.45					147072 \$ 16.78		147070 \$ 17.22				15/32	0.187	0.177			

RPMM

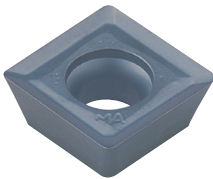


Features
Excellent geometries for a variety of applications

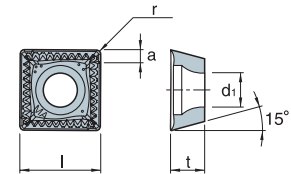


Designation	Coated Carbide										Uncoated Carbide		(inch)			Applicable Cutter	
	PT20C	PM25C	PM30C	PM30P	PM35P	PM40P	KM20C	MM30P	MT30P	SM20P	PM20U	KTM10U	d	t	d1	Cutter	Page No.
RPMM 1204 ENN		147779 \$ 18.75	146127 \$ 18.75										1/2	3/16	0.216	Mold Max E142	
RPMM 1204 X165		146147 \$ 19.06											1/2	3/16	0.216		

SDXT-A



Features
Aluminum geometry

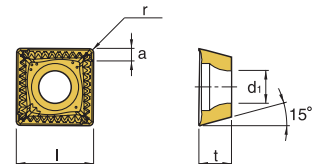


Designation	Coated Carbide										Uncoated Carbide		(inch)					Applicable Cutter	
	PM20C	PM25C	PM30C	PM30P	PM35P	PM40P	KM20C	MM30P	MT30P	SM20P	PM20U	KTM10U	l	t	r	a	d1	Cutter	Page No.
SDXT 09M405R-A											146803 \$ 11.63		0.375	0.157	0.011	0.047	0.157	MM90°FM E135	

SDXT-F2, M



Features
General purpose geometries for a variety of materials



Designation	Coated Carbide										Uncoated Carbide		(inch)					Applicable Cutter			
	PM20C	PM25C	PM30C	PM30P	PM35P	PM40P	KM20C	MM30P	MT30P	SM20P	PM20U	KTM10U	l	t	r	a	d1	Cutter	Page No.		
SDXT 09M405R-F2		147085 \$ 14.75					147410 \$ 11.58						0.375	0.157	0.011	0.047	0.157	MM90°FM E135			
SDXT 130508R-F2		146810 \$ 17.01											0.531	0.219	0.031	0.087	0.219				
SDXT 09M405R-M		147089 \$ 14.75	146802 \$ 14.51				147718 \$ 14.32	147719 \$ 14.51					0.375	0.157	0.011	0.047	0.157				
SDXT 130508R-M		146812 \$ 17.51	146813 \$ 17.01				148319 \$ 17.25	147721 \$ 17.51					146815 \$ 13.66	0.531	0.219	0.031	0.087		0.219		