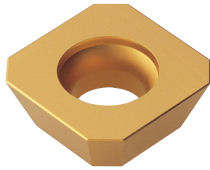


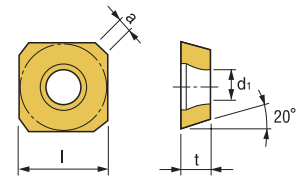


SECA/SEHT



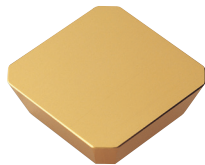
SECA

Features
Flat top geometry for more difficult applications

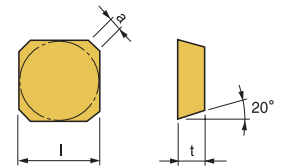


Designation	ISO	Coated Carbide									Cermet	Uncoated Carbide		(inch)				Applicable Cutter			
		PM20C	PM25C	PM35C	PM30P	PM35P	PM40P	KM20C	MM30P	MT30P		PT30S	PM20U	KTM10U	l	t	a	d1	Cutter	Page No.	
SECA 43 AFTN	1204		146749 \$ 20.58								147780 \$ 20.58		146750 \$ 16.00	146751 \$ 16.26		1/2	3/16	0.105	0.219		
SECA 43 AFFN	1204													146036 \$ 16.46	1/2	3/16	0.105	0.219			
SEHT 43 AFN-A	1204													146747 \$ 18.75	1/2	3/16	0.105	0.219			
SEHT 43 AFTN X45	1204		146130 \$ 22.69												1/2	3/16	0.105	0.219			

SECN



Features
Flat top geometry for a variety of applications

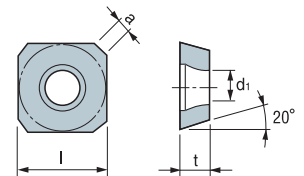


Designation	ISO	Coated Carbide										Uncoated Carbide		(inch)			Applicable Cutter		
		PM20C	PM25C	PM30C	PM30P	PM35P	PM40P	KM20C	MM30P	MT30P	SM20P	PM20U	KTM10U	l	t	a	Cutter	Page No.	
SECN 43 AFFN	1203												146666 \$ 14.96		1/2	1/8	0.091		
SECN 53 AFTN	1504		146661 \$ 26.33												5/8	3/16	0.094		

SEET-A



Features
Excellent geometry for softer materials such as aluminum



Designation	Coated Carbide									Cermet	Uncoated Carbide		(inch)				Applicable Cutter	
	PM20C	PM25C	PM35C	PM30P	PM35P	PM40P	KM20C	MM30P	MT30P		PT30S	PM20U	KTM10U	l	t	a	d1	Cutter
SEET 0903AGFN-A												147727 \$ 13.88	3/8	1/8	0.083	0.134	MM45°FM	E137
SEET 14M4AGFN-A												147732 \$ 17.36	0.551	0.157	0.104	0.173		

Quick Choice Grade Selection

