

Double Beam Digital Height Gauges w/ Hand Wheel

- Large LCD display
- Hand wheel design for fine adjustment
- Inch/Metric conversion
- Carbide tipped scriber
- Zero setting on any position



ASIMETO

Range	Resolution	Accuracy	Code No.	Price \$
0-12" / 0-300mm	0.001" / 0.01mm	±0.0015"/0.04mm	7627120	683.92
0-18" / 0-450mm	0.001" / 0.01mm	±0.0015"/0.04mm	7627180	1,169.52
0-24" / 0-600mm	0.001" / 0.01mm	±0.0020"/0.05mm	7627240	1,008.89

Double Beam Digit Counter Height Gauges

- Graduation: 0.001"
- Dial and digit counter reading
- Hand wheel for easier travel
- Carbide tipped scriber
- The digit counter provides bi-directional positioning and the capability of setting zero at any position

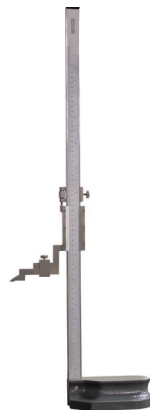


ASIMETO

Range	Dial Grad.	Counter Grad.	Accuracy	Code No.	Price \$
0-12"	0.001"	0.1" (Dual Reading)	±0.0015"	7623121	491.24
0-18"	0.001"	0.1" (Dual Reading)	±0.002"	7623181	620.40
0-24"	0.001"	0.1" (Dual Reading)	±0.002"	7623241	927.74

Vernier Height Gauges

- Fine adjustment for easy setting
- Satin chrome finish
- Carbide tipped scriber



ASIMETO

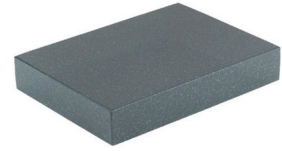
Range	Grad.	Accuracy	Code No.	Price \$
0-12"/0-300mm	1/128"/0.05mm	±0.0015"	7621120	315.02
0-24"/0-600mm	1/128"/0.05mm	±0.002"	7621240	657.70

Black Granite Surface Plates 0-Ledge



Imported Precision Toolroom Black Granite Surface Plates

These plates are made of the highest quality – True Black – Fine Grained – Non-porous – Jewel Hardness – Granite available to give years of long lasting service.



Specifications:

Compressive Strength 7329 lbs. / in²
Water Absorptivity 0.13%

Size (in.)	Thickness (in.)	Shipping Weight (lb)	(±)	Code No.	Price \$
Grade B-Tool Room- No Ledge					
9 x 12"	3"	40	±0.0001	255100	88.29
12 x 18"	3"	110	±0.0001	255105	137.32
18 x 24"	4"	189	±0.00015	255110	364.35
24 x 36"	4"	475	±0.0002	255115	668.99
36 x 48"	6"	1427	±0.0004	255120	1,814.65
Grade A-Inspection					
12 x 18"	3"	110	±0.000050	255130	210.26
18 x 24"	3"	145	±0.000075	255135	339.64
24 x 36"	4"	475	±0.0001	255140	737.60

Steel Surface Plate Stands



- Fabricated from 2" x 2" 1/4" thick angle iron, welded together for extra strength—easily support more than twice the weight of the surface plate
- No assembly required; ready to use
- Gray enamel finish
- For exact height, add stand height listed in chart to surface plate thickness
- Made in Canada



Plate Size (in.)	Weight (lb)	Stand Height (in.)	Code No.	Price \$
12 x 18"	80"	33"	255200	855.56
18 x 24"	95"	33"	255205	1,762.31
24 x 36"	125"	32"	255210	1,625.31
36 x 48"	175"	30"	255215	2,220.72
48 x 72"	300"	28"	255220	4,058.24