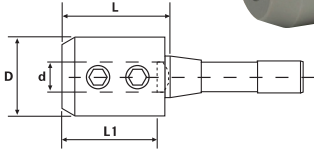


R8 End Mill Holders



- All ground body, bore, nose, flange
- TIR, 0.0001" / 0.003mm OD to ID
- Certified Steel



| Taper | Hole Dia. (d) | Gauge Length (L) | L1 | D | Set Screw | Code No. | Price \$ |
|-------|---------------|------------------|------|------|-----------|----------|----------|
| R8 | 1/4 | 1.33 | 1.18 | 0.79 | 1/4-28 | 534056 | 68.50 |
| R8 | 5/16 | 1.75 | 1.26 | 0.87 | 5/16-24 | 534058 | 68.50 |
| R8 | 3/8 | 1.33 | 1.26 | 1.00 | 3/8-24 | 534060 | 68.50 |
| R8 | 1/2 | 1.33 | 2.56 | 1.38 | 7/16-20 | 534064 | 68.50 |
| R8 | 5/8 | 1.50 | 1.61 | 1.65 | 9/16-18 | 534066 | 68.50 |
| R8 | 3/4 | 2.37 | 1.77 | 1.89 | 5/8-18 | 534068 | 78.51 |
| R8 | 1 | 3.25 | 2.76 | 2.36 | 3/4-16 | 534072 | 87.35 |
| R8 | 1-1/4 | 3.25 | 3.15 | 2.48 | 3/4-16 | 534074 | 91.59 |

Straight Shank End Mill Holders



- Can be used to extend the reach of the cutting tool as well as machining within tight clearances
- All ground body, bore, nose, flange
- TIR, 0.0001" / 0.003mm OD to ID
- Certified Steel



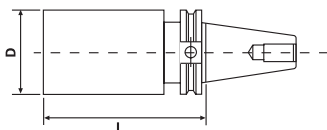
| Hole Dia. (d) | Gauge Length (L) | L1 | D | Set Screw | Code No. | Price \$ |
|---------------|------------------|------|-------|-----------|----------|----------|
| 1/4 | 6.00 | 1.18 | 0.750 | 1/4-28 | 534078 | 87.83 |
| 5/16 | 6.00 | 1.18 | 0.750 | 5/16-24 | 534080 | 83.22 |
| 3/8 | 6.00 | 1.57 | 1.00 | 3/8-24 | 534082 | 88.77 |
| 1/2 | 6.00 | 1.77 | 1.00 | 1/4-28 | 534084 | 88.77 |

Blank Bars



Blank bars are suitable for all applications, including deep boring. While the tapers are ground and hardened, the projections are not.

- Traverse ground shank to obtain optimum accuracy
- Meets or exceeds ANSI specifications
- Material to be machined - SNM 415H

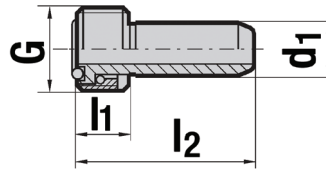


| Taper | L | D | Code No. | Price \$ |
|-------------------|----|------|----------|----------|
| CAT Taper | | | | |
| CAT 40 | 13 | 2.50 | 531592 | 316.17 |
| CAT 50 | 13 | 3.88 | 531594 | 355.77 |
| NMTB Taper | | | | |
| NMTB50 | 13 | 3.88 | 534602 | 326.65 |

HSK Coolant Tubes



- Designed specifically to be used with HSK holders
- Leak-proof screwed connection



| Used with Taper | d1 | G | l1 | l2 | Code No. | Price \$ |
|-----------------|----|---------|------|------|----------|----------|
| HSK63A | 12 | M18x1 | 36.5 | 11.5 | 536600 | 31.00 |
| HSK100A | 16 | M24x1.5 | 44.0 | 15.5 | 536602 | 34.00 |

Coolant Tube Wrenches



- Designed to lock and unlock the HSK coolant supply units



| Description | Used with Taper | Code No. | Price \$ |
|---------------------|-----------------|----------|----------|
| Coolant Tube Wrench | HSK63A | 536604 | 47.38 |
| Coolant Tube Wrench | HSK100A | 536606 | 50.99 |

Replacement O-Rings For DIRECT COOLANT Holders



- Can be used in all tapers of Direct Coolant Holders



| Holder Size | Code No. | Price \$ |
|-------------|----------|----------|
| 1/4 | 522390 | 1.84 |
| 5/16 | 522391 | 1.84 |
| 3/8 | 522392 | 1.84 |
| 1/2 | 522393 | 1.84 |
| 5/8 | 522394 | 1.84 |
| 3/4 | 522395 | 1.84 |
| 1 | 522396 | 1.84 |
| 1-1/4 | 522397 | 1.84 |

Replacement Set Screws



| Size | Size of Holder | Code No. | Price \$ |
|----------------|-----------------|----------|----------|
| 8-32 x 5/16 | 1/8 | 534109 | 0.60 |
| 10-32 x 5/16 | 3/16 | 534111 | 0.60 |
| 1/4-28 x 1/4 | 1/4 | 534110 | 2.72 |
| 5/16-24 x 1/4 | 5/16 | 534112 | 2.72 |
| 3/8-24 x 5/16 | 3/8, 7/16 | 534114 | 4.13 |
| 7/16-20 x 3/8 | 1/2 | 534116 | 4.95 |
| 9/16-18 x 1/2 | 5/8 | 534118 | 3.89 |
| 5/8-18 x 1/2 | 3/4, 7/8 | 534120 | 6.72 |
| 3/4-16 x 9.5mm | 1, 1-1/4, 1-1/2 | 534119 | 6.42 |
| 3/4-16 x 11/16 | 1, 1-1/4, 1-1/2 | 534122 | 7.31 |
| 1-14 x 7/8 | 2 | 534124 | 24.05 |