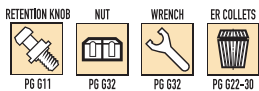
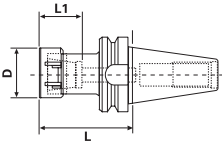


BT Taper ER Collet Chucks



- DIN coolant option - standard
- All ground body
- Factory balanced to save spindle life, tool life and increased productivity
- Threaded through holes for a back-up screw (tool stop) or coolant through when removed
- Wrench not included
- AT2 Taper Accuracy
- RFID Chip Hole



PREMIUM BALANCE
G2.5 at 30,000rpm
CERTIFICATE INCLUDED

PREMIUM BALANCE
G2.5 at 25,000rpm
CERTIFICATE INCLUDED

| Taper | Collet Series | Collet Range | L | L1 | D | Tightening Torque (Nm) | Code No. | Price \$ |
|-------------|---------------|--------------------|-------------|------|------|------------------------|----------------|---------------|
| BT30 | | | | | | | | |
| BT30 | ER11** | 0.019-0.275 | 2.00 | 0.65 | 0.75 | 29.8 | 532150* | 162.13 |
| BT30 | ER11** | 0.019-0.275 | 4.00 | 0.65 | 0.75 | 29.8 | 532152* | 164.17 |
| BT30 | ER16** | 0.019-0.406 | 2.36 | 0.87 | 1.26 | 56.9 | 532154* | 162.13 |
| BT30 | ER16** | 0.019-0.406 | 4.00 | 0.87 | 1.26 | 56.9 | 532156* | 164.17 |
| BT30 | ER16** | 0.019-0.406 | 5.00 | 0.87 | 1.26 | 56.9 | 532158* | 169.27 |
| BT30 | ER16** | 0.019-0.406 | 6.00 | 0.87 | 1.26 | 56.9 | 532160* | 188.64 |
| BT30 | ER20** | 0.039-0.511 | 2.50 | 1.06 | 1.38 | 81.3 | 532162* | 162.13 |
| BT30 | ER20** | 0.039-0.511 | 4.00 | 1.06 | 1.38 | 81.3 | 532164* | 188.64 |
| BT30 | ER25 | 0.039-0.629 | 2.00 | 1.18 | 1.65 | 128.8 | 532166* | 196.80 |
| BT30 | ER25 | 0.039-0.629 | 4.00 | 1.18 | 1.65 | 128.8 | 532168* | 196.80 |
| BT30 | ER32 | 0.078-0.787 | 3.00 | 1.34 | 1.97 | 169.5 | 532170* | 166.21 |
| BT30 | ER32 | 0.078-0.787 | 5.00 | 1.34 | 1.97 | 169.5 | 532172* | 201.90 |
| BT40 | | | | | | | | |
| BT40 | ER11** | 0.019-0.275 | 4.00 | 0.65 | 0.75 | 29.8 | 532176 | 182.53 |
| BT40 | ER11** | 0.019-0.275 | 6.00 | 0.65 | 0.75 | 29.8 | 532178 | 205.98 |
| BT40 | ER16** | 0.019-0.406 | 3.50 | 0.87 | 1.26 | 56.9 | 532180 | 182.53 |
| BT40 | ER16** | 0.019-0.406 | 5.00 | 0.87 | 1.26 | 56.9 | 532182 | 200.88 |
| BT40 | ER20** | 0.039-0.511 | 2.50 | 1.06 | 1.38 | 81.3 | 532184 | 182.53 |
| BT40 | ER20** | 0.039-0.511 | 4.00 | 1.06 | 1.38 | 81.3 | 532186 | 182.53 |
| BT40 | ER20** | 0.039-0.511 | 6.00 | 1.06 | 1.38 | 81.3 | 532188 | 209.04 |
| BT40 | ER25 | 0.039-0.629 | 2.25 | 1.18 | 1.65 | 128.8 | 532190 | 188.64 |
| BT40 | ER25 | 0.039-0.629 | 4.00 | 1.18 | 1.65 | 128.8 | 532192 | 152.96 |
| BT40 | ER25 | 0.039-0.629 | 6.00 | 1.18 | 1.65 | 128.8 | 532194 | 213.12 |
| BT40 | ER32 | 0.078-0.787 | 1.06 | | | | 532191* | 165.19 |
| BT40 | ER32 | 0.078-0.787 | 3.13 | 1.34 | 1.97 | 169.5 | 532196 | 182.53 |
| BT40 | ER32 | 0.078-0.787 | 5.00 | 1.34 | 1.97 | 169.5 | 532198 | 209.04 |
| BT40 | ER40 | 0.118-1.023 | 3.13 | 1.50 | 2.50 | 219.6 | 532200 | 209.04 |
| BT40 | ER40 | 0.118-1.023 | 5.00 | 1.50 | 2.50 | 219.6 | 532202 | 233.51 |
| BT50 | | | | | | | | |
| BT50 | ER16** | 0.019-0.406 | 2.50 | 0.87 | 1.26 | 56.9 | 532203 | 239.58 |
| BT50 | ER25 | 0.039-0.629 | 4.00 | 1.18 | 1.65 | 128.8 | 532206 | 239.58 |

* Not DIN Coolant

** Hex Nut

‡ ER Shorty Collet Chuck

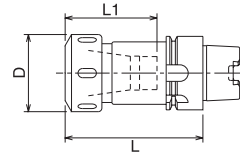
Prices in this catalogue are subject to change without notice. If there is a discrepancy between a product price listed in this catalogue and that listed on www.sowatool.com, the price on our website will take precedence.

Images are representational only and may not reflect actual product.

HSK63A ER Collet Chucks



- All ground body
- High rigidity and torque transmission
- Wrench not included
- AT2 Taper Accuracy
- RFID chip hole



PREMIUM BALANCE
G2.5 at 30,000rpm
CERTIFICATE INCLUDED

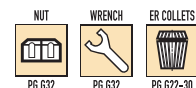
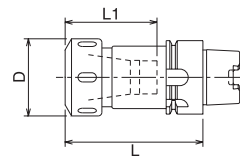
| Taper | Collet Series | Collet Range | L | L1 | D | Tightening Torque (Nm) | Code No. | Price \$ |
|--------|---------------|--------------|------|-------|-------|------------------------|----------|----------|
| HSK63A | ER16** | 0.019-0.393 | 3.00 | 0.866 | 1.260 | 56.9 | 536114 | 355.88 |
| HSK63A | ER16** | 0.019-0.393 | 5.00 | 0.866 | 1.260 | 56.9 | 536116 | 355.88 |
| HSK63A | ER20** | 0.039-0.511 | 3.00 | 1.062 | 1.378 | 81.3 | 536118 | 355.88 |
| HSK63A | ER20** | 0.039-0.511 | 5.00 | 1.062 | 1.378 | 81.3 | 536120 | 355.88 |
| HSK63A | ER25 | 0.039-0.629 | 3.00 | 1.181 | 1.654 | 128.8 | 536122 | 355.88 |
| HSK63A | ER25 | 0.039-0.629 | 5.00 | 1.181 | 1.654 | 128.8 | 536124 | 355.88 |
| HSK63A | ER32 | 0.078-0.787 | 4.00 | 1.260 | 1.969 | 169.5 | 536126 | 355.88 |
| HSK63A | ER32 | 0.078-0.787 | 6.00 | 1.260 | 1.969 | 169.5 | 536128 | 415.02 |
| HSK63A | ER40 | 0.118-1.023 | 4.00 | 1.496 | 2.480 | 219.6 | 536130 | 382.39 |

** Hex Nut

HSK100A ER Collet Chucks



- All ground body
- High rigidity and torque transmission
- Wrench not included
- AT2 Taper Accuracy
- RFID chip hole

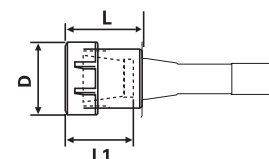


PREMIUM BALANCE
G2.5 at 25,000rpm
CERTIFICATE INCLUDED

| Taper | Collet Series | Collet Range | L | L1 | D | Tightening Torque (Nm) | Code No. | Price \$ |
|---------|---------------|--------------|------|-------|-------|------------------------|----------|----------|
| HSK100A | ER16** | 0.019-0.393 | 4.00 | 0.866 | 1.260 | 56.9 | 536134 | 407.88 |
| HSK100A | ER16** | 0.019-0.393 | 6.00 | 0.866 | 1.260 | 56.9 | 536136 | 514.95 |
| HSK100A | ER20** | 0.039-0.511 | 4.00 | 1.062 | 1.378 | 81.3 | 536138 | 407.88 |
| HSK100A | ER20** | 0.039-0.511 | 6.00 | 1.062 | 1.378 | 81.3 | 536140 | 514.95 |
| HSK100A | ER25 | 0.039-0.629 | 6.00 | 1.181 | 1.654 | 128.8 | 536144 | 514.95 |
| HSK100A | ER32 | 0.078-0.787 | 4.00 | 1.260 | 1.969 | 169.5 | 536146 | 524.13 |
| HSK100A | ER32 | 0.078-0.787 | 6.00 | 1.260 | 1.969 | 169.5 | 536148 | 561.85 |
| HSK100A | ER40 | 0.118-1.023 | 6.00 | 1.496 | 2.480 | 219.6 | 536152 | 642.41 |

** Hex Nut

R8 Taper ER Collet Chucks



| Taper | Collet Series | Collet Range | L | L1 | D | Tightening Torque (Nm) | Code No. | Price \$ |
|-------|---------------|--------------|------|------|------|------------------------|----------|----------|
| R8 | ER16 | 0.019-0.406 | 1.25 | 2.83 | 1.25 | 56.9 | 534360 | 113.05 |
| R8 | ER20 | 0.039-0.511 | 2.00 | 1.50 | 1.38 | 81.3 | 534362 | 113.05 |
| R8 | ER25 | 0.039-0.629 | 2.50 | 1.64 | 1.66 | 128.8 | 534364 | 117.30 |