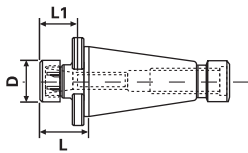


## NMTB Taper ER Collet Chucks



- Wrench not included

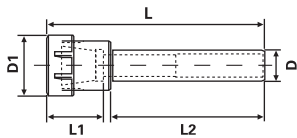


Taper	Collet Series	Collet Range	L	L1	D	Tightening Torque (Nm)	Code No.	Price \$
<b>NMTB40</b>								
NMTB40	ER16	0.019-0.406	1.77	0.87	1.26	56.9	534352	147.71
NMTB40	ER25	0.039-0.629	2.00	1.18	1.65	128.8	534354	154.30
NMTB40	ER32	0.078-0.787	2.00	-	-	-	534260	141.10
<b>NMTB50</b>								
NMTB50	ER16	0.019-0.406	2.00	0.87	1.26	56.6	534356	177.77

## ER Collet Chuck Extensions



- Wrench not included

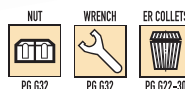


Collet Series	Collet Range	Shank Dia. (D)	D1	L	L1	L2	Tightening Torque (Nm)	Code No.	Price \$
ER11	0.019-0.275	1/2	0.740	6.11	0.091	5.00	29.8	534368	128.70
ER11	0.019-0.275	5/8	0.740	6.11	0.091	5.00	29.8	534370	156.01
ER11	0.019-0.275	3/4	0.740	5.65	0.091	5.00	29.8	534372	154.66
ER16	0.019-0.406	5/8	1.26	6.48	1.28	5.00	56.9	534374	143.78
ER16	0.019-0.406	3/4	1.26	6.48	1.28	5.00	56.9	534376	156.01
ER16	0.019-0.406	1	1.26	5.89	1.28	5.00	56.9	534378	165.63
ER20	0.039-0.511	3/4	1.38	6.67	1.48	5.00	81.3	534380	122.36
ER20	0.039-0.511	1	1.38	6.40	1.48	5.00	81.3	534382	165.19
ER20	0.039-0.511	1-1/4	1.38	6.40	1.48	5.00	81.3	534384	165.63
ER25	0.039-0.629	3/4	1.65	6.85	1.65	5.00	128.8	534386	166.10
ER25	0.039-0.629	1	1.65	6.85	1.65	5.00	128.8	534388	156.01
ER25	0.039-0.629	1-1/4	1.65	6.00	1.65	5.00	128.8	534390	166.10
ER32	0.078-0.787	1	1.97	7.09	1.85	5.00	169.5	534392	266.14
ER32	0.078-0.787	1-1/4	1.97	6.30	2.13	4.00	169.5	337805	206.85
ER32	0.078-0.787	1-1/4	1.97	7.09	1.85	5.00	169.5	534394	198.84

## R8 Taper ER Collet Chucks



- Wrench not included



Collet Series	Gauge Length	Nose Dia.	Draw Bar	Code No.	Price \$
ER32	40mm	50mm	7/16-20 UNF-3	337815	206.85
ER40	70mm	63mm	7/16-20 UNF-3B	337820	252.78

## NMTB Taper ER Collet Chucks



- Wrench not included

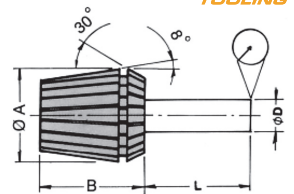


Taper	Collet Series	Gauge Length	Nose Dia.	Draw Bar	Code No.	Price \$
NMTB30	ER32	55	50	1/2-13	337825	206.85
NMTB30	ER40	85	63	1/2-13	337830	252.78
NMTB40	ER40	55	63	5/8-11	337835	257.37
NMTB50	ER40	58	63	1-8	337840	344.73

## ER Spring Collet Dimensional Data



ER collet system is made of special elastic steel material under excellent heat treatment and precise grinding process, so it has precise accuracy, powerful clamping ability, and is durable. This collet can clamp for a specific standard size and its next size. It can be widely used for boring, milling, drilling and tapping as well as for grinding operation, and is available for all sizes.

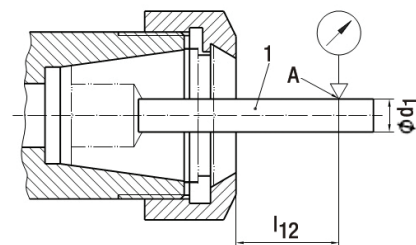


Type	A (mm)	B (mm)	L (mm)	ØD (mm)	DIN 6343 Precision	GS Precision
ER11	11.5	18	-	0.5-7	0.02	0.010
ER16	17	27	6	0.5-10	0.02	0.010
ER20	21	31	10	1-14	0.02	0.010
ER25	26	35	16	1-17	0.02	0.010
ER32	33	40	25	2-20	0.02	0.010
ER40	41	46	40	3-26	0.03	0.010
ER50	52	60	50	10-32	0.03	0.010

## Mounting Instructions for ER Collets

- Place collet inside nut and rotate the nut to engage with the extractor spiral in collet groove
  - Only then mount nut and collet together into the collet holder or machine spindle
- Note: Never use a 11-12mm collet to clamp a 12mm diameter, but rather use a 12-13mm collet

## 5 Micron AA ER Collet Tolerance Values



## Collet Run-Out Tolerance Values

d1 H7 Nominal Diameter		112	Run-Out Tolerance A	
Above	Up To (included)		Class 1	Class 2
1 (included)	1.6	6	0.005	0.015
1,6	3	10		
3	6	16		
6	10	25	0.005	0.020
10	18	40		
18	26	50		