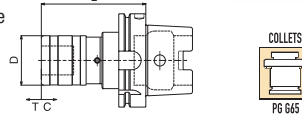


## HSK Tension/Compression Tap Holders



- Quick-change - push back on the holder sleeve and the adapter with tool is removable
- Press on the end of the adapter nose and the tool is removable - all in a few seconds
- Smooth stroke - even under full torque load, the tension-compression stroke is full and free
- Interchangeability - our adapters and holders are interchangeable with Universal-Bilz quick change holders and adapters
- AT2 Taper Accuracy
- RFID Chip Hole

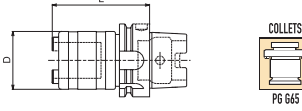


Taper	Tap Range Hand	Tap Range Pipe	System	L (in.)	D (in.)	T/C (in.)	Code No.	Price \$
HSK63	#0-9/16	1/8	#1	5.30	1.43	0.29/0.29	536196	652.41
HSK63	5/16-7/8	1/4-1/2	#2	6.10	2.09	0.49/0.49	536198	751.41
HSK100	#0-9/16	1/8	#1	5.30	1.43	0.29/0.29	536202	1,193.94
HSK100	5/16-7/8	1/4-1/2	#2	6.30	2.09	0.49/0.49	536204	1,285.85

## HSK Rigid Tap Holders

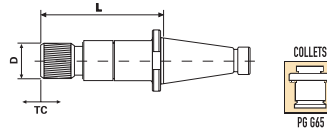


- Quick-change - push back on the holder sleeve and the adapter with tool is removable
- Press on the end of the adapter nose and the tool is removable - all in a few seconds.
- Interchangeability - our adapters and holders are interchangeable with Universal-Bilz quick change holders and adapters
- AT2 Taper Accuracy
- RFID Chip Hole



Taper	Tap Range Hand	Tap Range Pipe	System	L (in.)	D (in.)	Code No.	Price \$
HSK63	#0-9/16	1/8	#1	3.34	1.26	536184	540.54
HSK63	5/16-7/8	1/4-1/2	#2	4.00	1.97	536186	576.18
HSK100	#0-9/16	1/8	#1	3.54	1.43	536190	881.10
HSK100	5/16-7/8	1/4-1/2	#2	3.74	2.09	536192	1,052.37

## NMTB Taper Tension/Compression Tap Holders

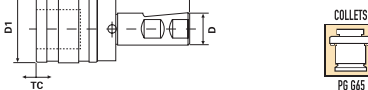
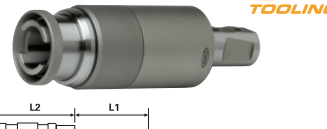


Taper	Tap Range Hand	Tap Range Pipe	System	L (in.)	D (in.)	T/C (in.)	Code No.	Price \$
NMTB40	#0-9/16	1/8	#1	3.90	1.25	0.79/0.39	534500	323.10

## Weldon Shank Tension/Compression Tap Holders



- Precision ground surfaces
- Compact length
- Provide additional mating flexibility
- Provides axial float
- Adjustable entry force

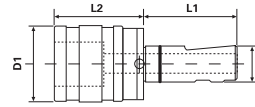


Tap Range Hand	Tap Range Pipe	System	Shank Dia. D	D1	L1	L2	T/C	Code No.	Price \$
#0-9/16	1/8	#1	1	1.25	2.28	4.13	0.79/0.39	534520	315.81
#0-9/16	1/8	#1	1	1.43	2.28	1.53	0.79/0.39	534522	315.81
#0-9/16	1/8	#1	1-1/2	1.25	2.69	4.13	0.79/0.39	534532	346.22
5/16-7/8	1/4-1/2	#2	1-1/4	2.00	2.28	5.55	0.85/0.49	534530	400.58
5/16-7/8	1/4-1/2	#2	1-1/2	2.00	2.69	5.55	0.85/0.49	534534	408.87

## Weldon Shank Rigid Tap Holders



- Precision ground surfaces
- Compact length
- Provides axial float
- Adjustable entry force
- Provide additional mating flexibility

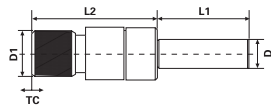
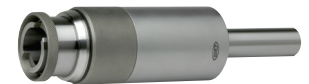


Tap Range Hand	Tap Range Pipe	System	Shank Dia. D	D1	L1	L2	Code No.	Price \$
#0-9/16	1/8	#1	1	1.26	2.28	1.46	534540	183.15
5/16-7/8	1/4-1/2	#2	1	1.97	2.28	2.12	534542	256.41
13/16-1-3/8	3/4-1	#3	1-1/2	2.83	2.69	3.27	534544	325.71

## Straight Shank Tension/Compression Tap Holders



- Straight shank tooling may be used to extend tooling reach for extended length operations
- This option is less costly than extended length integral shank tooling
- They may be used with any size machining centre or lathe
- When loaded into larger holders, their reduced O.D. permits tapping applications within large holes or whenever tight clearances are encountered

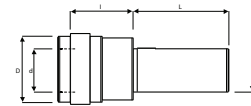


Tap Range Hand	Tap Range Pipe	System	Shank Dia. D	D1	L1	L2	Tension & Compression T C	Code No.	Price \$
#0-9/16	1/8	#1	1	1.25	3.50	4.13	0.79 0.39	534510	315.81
5/16-7/8	1/4-1/2	#2	1	2.00	3.50	5.55	0.85 0.49	534512	376.20
#0-9/16	1/8	#1	1-1/4	1.25	4.00	4.13	0.79 0.39	534514	308.55

## Straight Shank Tension/Compression Tapping Chuck



- Precision ground surfaces
- Compact length
- Provides axial float
- Adjustable entry force
- Plastic collar to protect chuck from coolant
- Roller cage construction

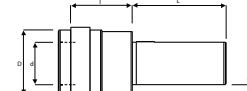


Desc	System	Shank D1	d	D	I	L	Tap Capacity	Tension & Compression T C	Code No.	Price \$
1" shank	#1	1.00	0.748	1.50	1.76	1.95	#0 - 9/16	0.35 0.35	339100	331.60
1" shank	#2	1.00	1.220	2.17	2.52	2.00	5/16 - 7/8	0.59 0.59	339105	395.01
1-1/2" shank	#2	1.50	1.220	2.17	2.52	3.50	5/16 - 7/8	0.59 0.59	339110	429.31
1-1/2" shank	#3	1.50	1.890	3.09	3.85	3.50	13/16 - 1-3/8	0.94 0.94	339115	615.38

## Straight Shank Rigid Tapping Chuck



- Precision ground surfaces
- Compact length
- No float for synchronous tapping
- Coolant through spindle capability



Desc	System	Shank D1	d	D	I	L	Tap Capacity	Code No.	Price \$
1" shank	#1	1.00	0.748	1.30	1.60	1.95	#0 - 9/16	339120	192.31
1" shank	#2	1.00	1.220	2.00	2.50	2.00	5/16 - 7/8	339125	269.23
1-1/2" shank	#3	1.50	1.890	2.84	3.44	3.50	13/16 - 1-3/8	339130	342.00