

## SYNCHROLIZE TAPPING SYSTEM FOR RIGID TAPPING

The Synchronize system has 0.008" of compensation in compression and 0.039" of compensation in tension.

- The Synchronize tapping chuck is the better solution, it gives you the possibility to work with axial compensation
- Tap capacity: M3-M12, M6-M20, M14-M33
- Triple life of tap in comparison to a traditional tapping system
- Quick change of the tap and of the adapter
- Suitable for rigid tapping with micro compensation
- Uses ER Tap Collets full and free
- Up to 9" of gauge length can be obtained when using the extension system
- No need for tap collets due to the opposing set screws in the tap adapters

### CAT Taper Synchronize Tap Chucks



- Slim nose design
- Up to 200% increase in tap life

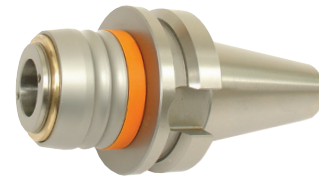


Taper	Tap Range Hand	System	Nose Dia. (in.)	Gauge Length (in.)	Code No.	Price \$
CAT40	#0 - 1/2	1	1.693	2.087	531610	553.63
CAT40	3/8" - 3/4	2	2.323	2.874	531614	688.22
CAT50	#0 - 1/2	1	1.690	2.402	531612	592.08
CAT50	3/8" - 3/4	2	2.323	2.874	531616	857.31

### BT Taper Synchronize Tap Chucks



- Slim nose design
- Up to 200% increase in tap life



Taper	Tap Range Hand	System	Nose Dia. (in.)	Gauge Length (in.)	Code No.	Price \$
BT40	#0 - 1/2	1	1.690	2.402	532310	438.27

### Synchronize Quick Change Tap Adapters — Extended



- Opposing set screws to secure tap, NO NEED for Tap Collets
- Designed for perfect hole alignment



System	Tap Range	Collet Style	L	Nose Dia.	Code No.	Price \$
1	#0 - 1/2	ER16	55mm	28mm	338126	664.56
2	3/8" - 3/4	ER25	86mm	42mm	338128	710.70

- See page G24 for ER16 collets
- See page G26 for ER25 collets

### HSK Synchronize Tap Chucks



- Slim nose design
- Up to 200% increase in tap life



Taper	Tap Range Hand	System	Nose Dia. (in.)	Gauge Length (in.)	Code No.	Price \$
HSK50A	#0 - 1/2	1	1.693	2.756	536210	553.63
HSK50A	3/8" - 3/4	2	2.362	3.819	536218	688.22
HSK63A	#0 - 1/2	1	1.693	2.520	536212	553.63
HSK63A	3/8" - 3/4	2	2.362	3.819	536214	688.22
HSK100A	3/8" - 3/4	2	2.362	3.583	536216	1,034.20

### Synchronize Quick Change Tap Adapters



- Opposing set screws to secure tap, NO NEED for Tap Collets
- Designed for perfect hole alignment



System	Tap Range	Collet Style	Length	Nose Dia.	Code No.	Price \$
1	#0 - 1/2	ER16	24mm	28mm	338120	249.72
2	3/8" - 3/4	ER25	28mm	42mm	338122	292.02

- See page G24 for ER16 collets
- See page G26 for ER25 collets