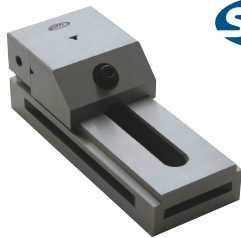


Toolmaker Visés

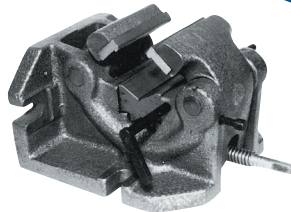
- Solid one piece body
- High quality alloy steel, surface hardened to 58-62 HRC
- Parallelism: 0.005mm / 100mm
- Perpendicularity: 0.005mm
- Angled centre channel provides extra jaw capacity



Model No.	Length (mm)	Width (mm)	Jaw Opening (mm)	Jaw Height (mm)	Code No.	Price \$
KQG50	140	50	65	25	230815	96.04
KQG63	175	63	85	32	230820	117.38
KQG73	190	73	100	35	230825	127.33
KQG88	235	88	125	40	230830	195.34
KQG100	245	100	125	45	230835	257.91
KQG125	285	125	160	50	230836	389.24

Milling Machine Visés For Round Workpieces

These visés are used for clamping round workpieces with diameters from 2" to 6.3" for use on a milling machine or drill press.



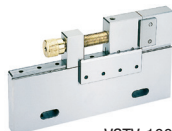
Jaw Width	Shaft Capacity	Weight (lb)	Code No.	Price \$
6	2 to 6.3	165	401003	3,672.59

EDM Tool Maker Visés

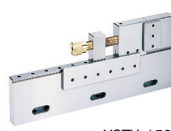
- Parallelism: $\pm 0.002\text{mm}$ / 100mm
- Squareness: $\pm 0.002\text{mm}$ / 100mm
- Stainless Steel
- VSTV-50W designed specifically for wire cutter use



VSTV-50W



VSTV-100W



VSTV-150W



Model	Max Opening	Thickness	Jaw Depth	Weight (kg)	Code No.	Price \$
VSTV-50W	55mm	27mm	25mm	1.0	230840	710.29
VSTV-100W	100mm	24mm	50mm	4.9	230842	1,842.74
VSTV-150W	150mm	24mm	60mm	6.8	230844	4,336.20

Heavy Duty Bench Visés With Swivel

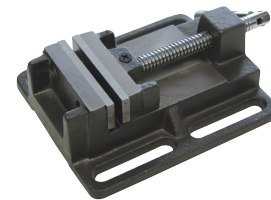
Manufactured from high quality grey iron castings - a very strong material with excellent shock absorbing capacity and immense strength under compression. These rigid and robust visés, machined to close tolerances, are designed for smooth operation and reliability.



Jaw Width (in.)	Max. Jaw Opening (mm)	Throat Depth (mm)	Code No.	Price \$
4	127	55	231400	227.65
5	152	70	231405	330.21
6	178	80	231410	440.28

Drill Press Visés

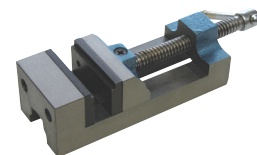
- High tensile iron casting
- Cold rolled screw thread
- Plain jaws of special steel



Jaw Width (in.)	Opening (in.)	Jaw Depth (in.)	Weight (lb)	Code No.	Price \$
3	3	1-1/8	6	370206	58.81
4	4	1-3/8	10	370211	76.84
5	5	1-1/2	17-1/2	370216	135.47
6	6	1-1/2	23	370221	157.62

Drill Press Vise P250

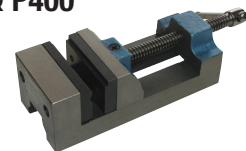
- High tensile iron casting
- Jaw plates - one grooved and one plain
- Accurate machining and assembling
- Four sides and one end machined



Jaw Width (in.)	Jaw Depth (in.)	Opening (in.)	Length (in.)	Weight (lb)	Code No.	Price \$
2-1/2	1-1/2	2-9/16	7-1/4	5-1/2	370226	68.49

Drill Press Visés P350 & P400

- Rugged 3 inch and 4 inch
- Precision cut ACME thread screw
- Hexagonal screw head for tight clamping



Jaw Width	Jaw Depth	Opening (in.)	Length	Weight (lb)	Code No.	Price \$
3	1-3/4	3	9-1/4	9-3/4	370236	80.60
4	1-3/4	4	10-3/4	17	370241	125.88