

# Workholding, Clamping & Fixturing

## Unigrip Drill Press Vises

- Manufactured from graded cast iron, these vises have a precision ground base and vise bed for smooth lateral movement of the movable jaw.
- Longitudinal and transversal prisms in the fixed jaw allow for firm gripping of round jobs of different sizes both horizontally and vertically. Special seat in jaws facilitates retaining of flat workpieces.
- Equipped with a convenient unigrip mechanism which increases the scope of application of this range of vises. Spindle moves inside the hollow hand grip allowing the vise to be used at a location away from the table edge.
- Available with 3 mounting options via 2 additional precisely ground surfaces: end face and side face. This allows for drilling along all axes with a single setting of the job and holding of long workpieces which are difficult to manage in regular vises.



Model No.	Jaw Width	Opening (in.)	Jaw Depth	Code No.	Price \$
DPV/UG-75	3	2-3/4	13/16	370925	132.17
DPV/UG-100	4	3-1/2	13/16	370930	154.05
DPV/UG-125	5	4-15/32	1-3/8	370935	234.86
<b>3 WAY Drill Press Vise</b>					
DPV/UG/3/100	4	3-1/2	13/16	370940	209.16

## SG Iron Unigrip Drill Press Vise

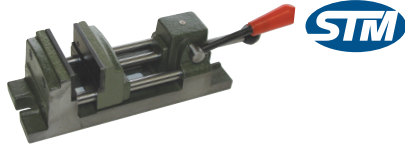
- Manufactured from SG Iron, making them amongst the strongest vises in the market - virtually unbreakable
- Only drill vise that can also be used as a milling vise
- Equipped with long mounting slots for easy adjustment on the machine table
- Fixed jaw has horizontal and vertical V slots for holding round jobs
- Both jaws have a seat for retaining flat and low height workpieces
- Movable steel jaw is supported by a jaw seat imparting rigidity and further strength



Model No.	Jaw Width	Opening (in.)	Code No.	Price \$
DPV/SG-80	3-3/16	3-9/64	370945	154.35

## Piston Vises

- Easy and speedy
- Quick grip drill press vises



Model No.	Jaw Width	Jaw Depth	Opening (in.)	Code No.	Price \$
V-75	3	1-1/4	3	326485	327.85
V-100	4	1-15/16	4-11/16	326490	389.86

## "G" Clamps

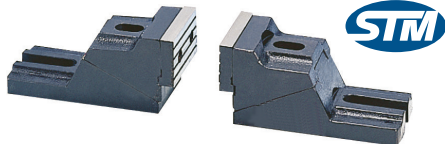
- SG iron with a tensile strength over 60,000 psi
- Powder coated finish
- Swiveling pad
- Handle designed to bend before the frame can be overstressed



Model	Clamp Capacity (in.)	Throat Depth (in.)	Load Capacity (lb)	Code No.	Price \$
GCL/13D/100	4	2-11/32	1200	231442	32.09
GCL/13D/150	6	3	1400	231443	40.86
GCL/13D/200	8	3-1/8	1700	231444	51.74
GCL/13D/250	10	3-1/2	2200	231445	72.22

## Free Style Vises

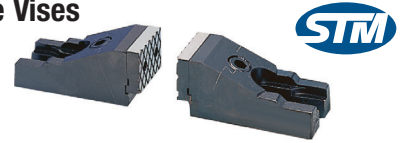
- Free style clamping
- Light duty



Model	Dimensions WxHxL	Clamping Capacity HxL	Weight (2pcs) (kg)	Code No.	Price \$
FV-350	75x67x150mm	140x350mm	7.5	326450	330.35
FV-450	100x90x200mm	180x450mm	14	326455	393.22
FV-550	125x120x250mm	250x550mm	23	326460	566.17

## Heavy Duty Free Style Vises

- Free style clamping
- Heavy duty



Model	Height (mm)	Width (mm)	Length (mm)	Weight (2pcs) (kg)	Code No.	Price \$
SV-62	59.5-80.5	64	139	5.8	326465	457.39
SV-85	86-110	86.5	192	11	326470	729.30
SV-125	84-117	127	218	21	326475	1,015.17

## U/N Work Stopper — Non-toothed

- Locking lever can be rotated a full 360°
- Arm made of anodized aluminum
- Steel hinge pins



Model	T-Slot Size	Stop Pin Length	Height	Arm Length	Code No.	Price \$
VWS-123	16mm	160mm	200mm	132mm	326440	333.06

## U/N Work Stopper — Toothed

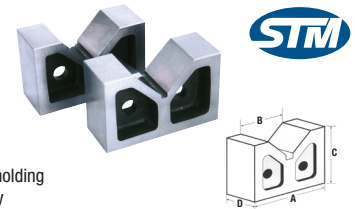
- Locking lever can be rotated a full 360°
- Arm made of anodized aluminum
- Steel hinge pins
- Slip adjustment of the stop pin before it is locked into place



Model	T-Slot Size	Stop Pin Length	Height	Arm Length	Code No.	Price \$
VWS-125	16mm	160mm	200mm	132mm	326445	343.47

## Vee Blocks — Cast Iron

- Made from close grained cast iron, these blocks are precisely ground and machined square and parallel
- The vee's are 90° centered and true
- The blocks are manufactured and supplied in numbered pairs and come in handy for holding large jobs where clamping is not necessary
- Squareness and Parallelism of Vee grooves: within 0.0012" (30 microns)



Width (A) (in.)	Vee Width (B) (in.)	Height (C) (in.)	Thickness (D) (in.)	Model No.	Code No.	Price \$
3	1-3/4	2-3/8	1-5/16	VB/C-3	231102	70.27
4	2-3/16	2-9/16	1-9/16	VB/C-4	231104	91.19
5	2-7/16	3-1/8	2	VB/C-5	231106	124.34
6	3-1/16	3-1/2	2-7/16	VB/C-6	231108	198.79
8	4-1/2	5-1/2	4	VB/C-8	231110	482.07
10	5	6-1/2	5	VB/C-10	231112	854.94
12	5-1/8	8	6	VB/C-12	231114	1,252.61

## Vee Blocks — Cast Iron

- Supplied in matched and numbered pairs, these vee blocks are manufactured from high quality castings, properly seasoned against distortion, and are accurately machined square and parallel.
- The 90° vee is centered and true.



Vee Width (in.)	Vee Depth (in.)	Width (in.)	Height (in.)	Thickness (in.)	Weight (lb)	Code No.	Price \$
1	1/2	2	1-1/4	1-7/8	0.9	370556	42.95
1-3/4	7/8	3	2-3/8	2-5/8	2.5	370561	52.39
2-1/8	1	4	2-5/8	3-1/4	5	370566	70.96
2-3/8	1-1/8	5	3-1/8	4	8	370571	106.32
3-1/8	1-9/16	6	3-1/2	5	15	370576	143.64
3-5/8	1-13/16	7	4-1/2	6	28	370581	221.96
4-1/2	2-1/4	8	5-1/2	8	44	370586	305.72
5	2-1/2	10	6-5/8	10	69	370591	519.97
5-1/8	2-1/2	12	8	12	132	370596	1,010.05