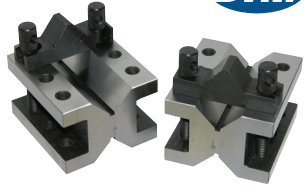


Workholding, Clamping & Fixturing

Precision V-Block Sets

Our ultra precision V-block set offers a quick, accurate and positive means of holding work pieces for layout, machining, grinding or inspection. One reversible swing-away clamp is provided with each V-block. The versatile clamp, plus the unique offset hole pattern in the top of the V-block, offers a large variety of clamping to almost any work surface.

- All V-blocks are parallel, square and centered within 0.0002"



90° V-Block Dimensions			Dia. To Be Inspected or Scribed		Code No.	Price \$
Length	Width	Height	Min.	Max.		
2-3/8	2-3/8	2	13/64	1-3/16	230135	123.28

Ultimate V-Block & Clamp Set

Manufactured from selected steel, Vee Blocks are fully hardened and ground. Adjustable side screw with cap in the clamp supports the block and prevents tilting. Four 3/8"-16 tapped holes, two in the base and one on each side allow attachment to an angle iron which can then be attached to a lathe face plate or held by a magnetic chuck.

- Sold Individually

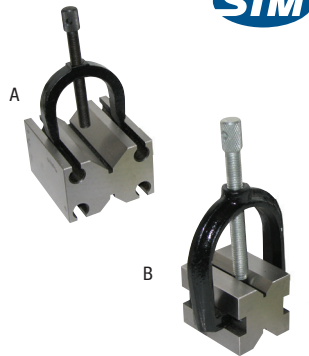


Block Length (in.)	Block Height (in.)	Block Width (in.)	Model No.	Code No.	Price \$
3-19/32	1-7/8	1-7/8	VB/S-48	231082	130.98

V-Blocks & Clamps

All sides are ground square and parallel to each other. Models are designed so the clamps do not protrude over the sides; thus the tool can be used on its sides.

- Compares with other V-blocks costing twice as much
- Matched accuracy 0.0002". 90° vees are ground central, parallel and square with the ends precision ground
- Clamps included
- Matched and numbered in pairs
- Hardened and ground chrome steel
- Sold in precision matched pairs only

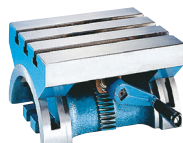
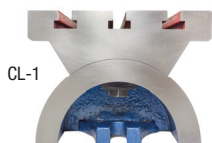
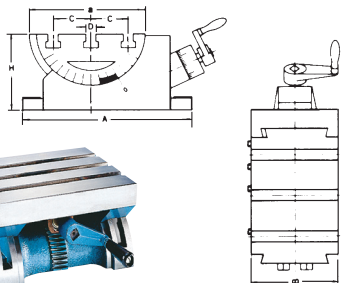


Cap.	Dimensions (W x H x L)	Type	Code No.	Price \$
2-1/8	2-3/4 x 3-1/2 x 4-7/8	A	205120	1,075.64
1	1-3/8 x 1-5/8 x 1-3/4	B	205105	165.88

Adjustable Swivel Angle Plate

Special Features:

- The CL Adjustable Swivel Angle Plate is mainly used for precise angle finishing, suitable for wide purposes
- CL-1 is Bolt Lock Style

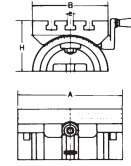


Model No.	A	a	B	C	D	H	T-Slots	Weight Capacity	Code No.	Price \$
CL-1	252	180	125	55	14	115	3	20 kg	326126	815.45
CL-2	300	240	180	65	16	150	3	30 kg	326128	1,008.98

Angle Plate

BRA-180 BRA-250 BRA-380

- Low profile
- Micro reading 5 min
- Adjustable 45° each side
- Special design for angle setting on various machine tools

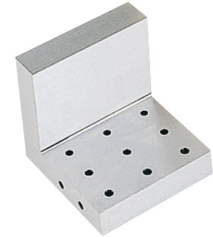
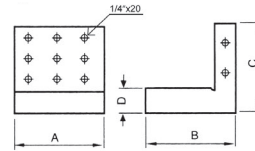


Model No.	B	A	H	T-Slot E	Weight (kg)	Code No.	Price \$
BRA-180	130	180	91	10	7.5 kg	326120	523.24
BRA-250	178	250	133	12	22.5 kg	326122	772.71
BRA-380	260	380	185	16	69 kg	326124	1,263.60

Precision Steel Angle Plates

VRS Precision Steel Angle Plates

- Material: YK30 Alloy Steel
- Hardness: 58HRC
- Accuracy: 0.005/100mm



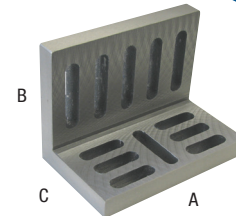
Model No.	A	B	C	D	Net Wt.	Code No.	Price \$
VRS-33	75	75	100	25	2.2 kg	370400	351.88
VRS-44	100	100	100	25	3.7 kg	370402	383.11
VRS-46	100	100	150	25	4.5 kg	370404	441.29
VRS-85	200	120	200	40	14.3 kg	370406	1,194.25
VRS-1206	300	150	300	50	32.3 kg	370408	1,931.02

Slotted Angle Plates — Webbed & Open

Made of high-tensile cast iron seasoned against distortion, skillfully machined square and parallel, these plates are supplied in two types, Type A and Type B, the former having side webs.

Type A-Webbed: Machined on outside surfaces and edges only.

Type B-Opened: Machined all over, except slots.



A	B	C	Webbed Code No.	Price \$	Open Code No.	Price \$
3	2-1/2	2	370306	58.97	-	-
3-1/2	3	2-1/2	370311	66.39	-	-
4-1/2	3-1/2	3	370316	75.55	370356	93.94
6	5	4-1/2	370321	119.71	370361	138.09
7	5-1/2	4-1/2	370326	145.36	370366	176.69
8	6	5	370331	186.79	370371	206.21
9	7	6	370336	232.70	370376	284.26
10	8	6	370341	287.06	370381	322.05
12	9	8	370346	440.68	370386	489.39

Prices in this catalogue are subject to change without notice. If there is a discrepancy between a product price listed in this catalogue and that listed on www.sowatool.com, the price on our website will take precedence.

Images are representational only and may not reflect actual product.