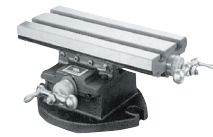


## Cross Table VCT-512

Applied in general machines such as compounding machine, drilling machine, etc., or large objects of special shape which cannot be clamped by common vises.

- Lateral moving travel on surface: 11"
- Longitude moving travel on surface: 6"



Model No.	Table (mm)	Height (mm)	Travel (mm)	Base (mm)	Dial Grad. (mm)	Net Weight (kg)	Code No.	Price \$
VCT-512	300 x 140	115	200 x 125	225 x 200	0.03	16.6	230965	915.92

## Sine Bar

- Effectively cancels the angle being measured to check its accuracy
- Ground flat, square and parallel within 0.0002"
- Steel hardened to 52HRC

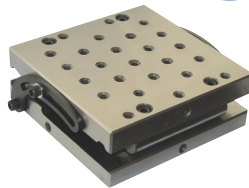


Model No.	Length (in.)	Width (in.)	Height (in.)	Centre Distance (in.)	Parallel	Hardness	Block Dia.	Material	Net Wt.	Code No.	Price \$
YCT-S25	6-3/8	1	1-1/4	5"	0.00012	52HRC	3/4	SK2	1.0kg	230760	100.43
YCT-S50	6-3/8	2	1-1/4	5"	0.00012	52HRC	3/4	SK2	1.9kg	230765	133.94

## Sine Plates

### YCT-66/YCT-47 Sine Plates

Precision ground, hardened to 58HRC and normalized by a sub-zero treatment. Rolls are hardened and ground to an accuracy of 0.001mm. High precision of parallelism within 0.002mm and squareness within 0.005mm. Set-up and dressing time reduced to a bare minimum due to simplicity of set up. (Angle 0°, 60°)



Model No.	Width x Length (in./mm)	H (in./mm)	Code No.	Price \$
YCT-47	4 x 7	2.37	230780	502.05
YCT-66	6 x 6	2.37	230785	535.56
YCT-47M Magnetic	100 x 175 mm	60 mm	230770	1,171.33
YCT-66M Magnetic	150 x 150 mm	60 mm	230775	1,288.36

## Sine Visas

- Body is one solid piece of steel, hardened like the rest of the sine vise to 58-62 HRC
- Dual 0.200" minute steps for setting small angles with standard gauge blocks are built into the gauge block roll
- All 7" x 3-1/2" sine vises have small horizontal and vertical vees in the moveable jaw
- Provides a quick and accurate means of holding a workpiece at an angle for machining, drilling or grinding



Model No.	Size (in.)	Code No.	Price \$
YCT-SV25	3-1/2 x 2-1/2	230705	210.37
YCT-SV30	3-1/2 x 2-7/8	230710	277.00
YCT-SV200	2-3/8 x 2	230715	585.66
YCT-SV250	2-7/8 x 2-1/2	230720	552.26
YCT-SC300	3-3/8 x 3	230725	753.01

## Arbor Presses

Capacity Ton	Shipping Weight (lb)	Throat Depth (in.)	Height of Press	Base Dimensions	Largest Arbor	Size	Length	Stroke	Code No.	Price \$
1/2	22	2-7/8	10	4 x 9-1/2	1-1/8	3/4 x 3/4	7-1/2	4-1/2	326090	121.31
1	37	3-1/4	12	5 x 11	1-3/8	1 x 1	9-1/2	5-1/4	326092	174.92
2	86	5	17	6-3/4 x 17	1-3/4	1-1/4 x 1-1/4	14	8-1/2	326094	401.88
3	152	5-3/4	21-1/2	8 x 18	2-1/2	1-1/2 x 1-1/2	18	12-1/2	326096	704.29
5	308	8-3/4	35-3/4	10 x 26-3/4	3-1/4	2 x 2	26-3/4	18-1/8	326098	2,106.95

## Ratchet Type Arbor Press

Capacity Ton	Shipping Weight (lb)	Throat Depth (in.)	Height of Press	Base Dimensions	Max. Height	Largest Arbor	Size	Length	Stroke	Code No.	Price \$
3	152	5-3/4	21-1/2	8 x 18	12-1/2	2-1/2	1-1/2 x 1-1/2	18	12-1/2	326099	819.15

