

GS160G 6" Precision Milling Machine Vice

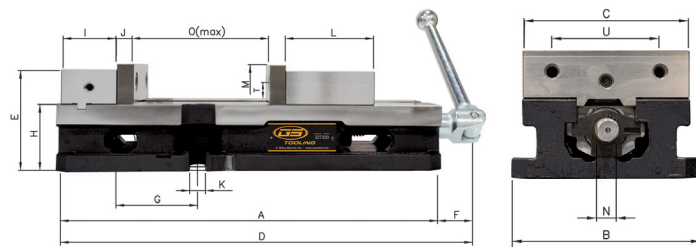


This vise has been redesigned with new industry leading workholding features.

- Jaw opening: 9.13" / 232mm
- Bed height: 2.875" ±0.0005"
- Weight: 68lbs / 31kg
- Narrower body style to allow more vises on a machine table
- The bearing pack has been relocated to help reduce oil/water/chip leakage into the vise body
- The thrust bearings have been replaced with ball bearings to make the pack stronger and more stable
- Spherical segment creates all-directional alignment and reduces jaw lift for improved performance
- Spindle does not protrude past the end of the body
- Brush seal design
- Perpendicularity (running face and jaw plate): 0.0004"
- Parallelism (running face to bottom of bed): 0.0006"
- Material: FCD-60 (80,000psi)
- Stationary jaw: 4 bolt stationary design reduces lift
- Pull-type design: Reduces stress on body during clamping
- Chip evacuation: Straight through the body on sides and ends. Locations strategically chosen to not reduce body strength
- Max. Clamping Force: 30378 ft/lbs



10 YEAR WARRANTY!



Model	Code No.	Price \$
GS160G	327320	702.00
#2 Main Screw	327322	105.56
#4 Sliding Spindle Nut	327324	115.99
#5 Movable Jaw	327326	155.05
#6 Fixed Jaw	327328	133.47
#7 Jaw Plate (2pcs)	327330	99.19
Repair Kit - consists of #8 segment, #20 bearing, #21 o-ring, 2pc #10 brush, 2pc #19 c-clip	327332	51.27
Handle Assembly - consists of #11 socket, #12 bar, #13 pin	327334	58.32
#14 Slide Cover (Back)	327336	6.47
#14 Slide Cover (Front)	327338	12.95
#16 Bolt for Jaw Plate (piece)	327340	3.30
#17 Bolt (long) for Fixed Jaw	327342	3.40
#18 Bolt (short) for Fixed Jaw	327344	3.39

A	B	C	D	E	F	G	H	I	J	K	L	M	N	O	T	U	Weight	Code No.	Price \$
427	186	151	466	111.025	39	90.53	73.025	58.7	18.42	17.46	101.6	44.5	19	232	23.8	98.4	31kg	327320	702.00

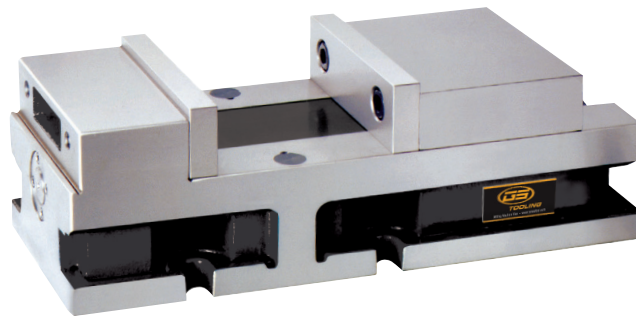
Capacity

I	II	III	IV
0-232	119-351	77-309	196-428
0~9.13"	4.68~13.82"	3.03~12.16"	7.72~16.85"
0~232mm	119~351mm	77~309mm	196~428mm

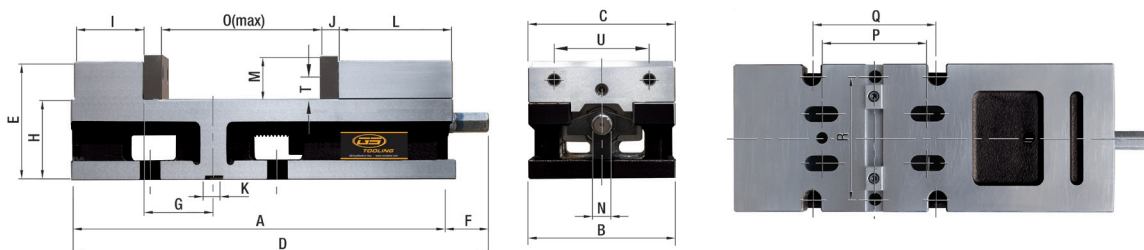
GSV60 6" Versatile Vise



- 6" vise with 6-1/2" opening
- High accuracy vise for single station CNC centres specially designed to prevent workpiece lift
- 2 operating positions for Vertical Machine Centres: Upright & Lay Down
- 1 operating position for Horizontal Machine Centres: Horizontal
- Bed height: 81mm ±0.012mm (3.189" ±0.0005")
- Material: FCD-60
- Weight: 68lbs / 31kg



LIFETIME WARRANTY!



A	B	C	D	E	F	G	H	I	J	K	L	M	N	O	P	Q	R	T	U	Weight	Code No.	Price \$
385	152.45	151	431.8	118.7	46.8	69.84	81	69.9	18	18	114.3	44.5	19	163	107.95	127	127	23.8	98.4	31kg	382620	995.00