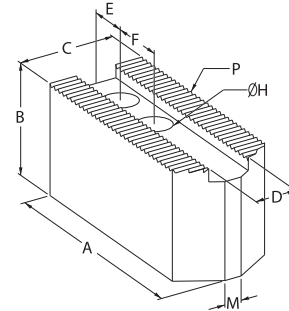
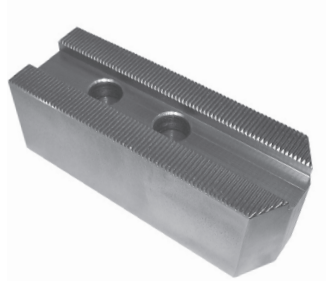


Metric Serrated Soft Top Jaws — Pointed



STM Jaws

- For Autoblok, Howa, Kitagawa, Matsumoto, Shunk



Chuck Dia.	Serration	A	B	C	D	E	F	H	M	Wt. (kg)	Model No.	STM Code No.	Individual Price \$	STM Code No.	Set of 3 Price \$
135	1.5x60°	55	30	25	10	10	18	9	5	0.239	HKM.13.01	491230	33.34	-	-
135	1.5x60°	55	25	25	10	14	19	9	4	0.192	HKM.13.05	491245	33.92	-	-
165(6")	1.5x60°	80	30	30	12	19	20	11	7	0.40	HKM.16.05	491255	35.05	491256	109.86
165(6")	1.5x60°	75	60	30	12	19	20	11	7	0.76	HKM.16.08	491275	56.76	-	-
210(8")	1.5x60°	95	40	35	14	24	25	13	5	0.80	HKM.21.00	491290	42.71	-	-
210(8")	3x60°	95	40	40	14	24	25	13	12	0.96	HKM.21.3.01	491390	49.00	-	-
210(8")	1.5x60°	95	40	40	14	20	25	13	12	0.97	HKM.21.01	491300	42.71	491301	127.91
210(8")	1.5x60°	95	50	40	14	20	25	13	12	1.20	HKM.21.02	491320	52.98	-	-
210(8")	1.5x60°	95	60	40	14	20	25	13	12	1.44	HKM.21.03	491330	59.62	-	-
210(8")	1.5x60°	95	80	40	14	20	25	13	12	1.82	HKM.21.04	491340	86.56	-	-
210(8")	1.5x60°	95	100	40	14	20	25	13	12	2.43	HKM.21.05	491350	100.94	-	-
210-254(8")	1.5x60°	95	40	40	16	20	25	13	12	0.96	HKM.21.10	491365	44.19	-	-
254-270(10")	1.5x60°	110	40	40	16	30	30	13	12	1.11	HKM.25.01	491400	44.54	491401	139.08
254-270(10")	1.5x60°	130	40	40	16	30	30	13	12	1.36	HKM.25.01 L130	491415	55.84	-	-
254-270(10")	1.5x60°	110	60	40	16	30	30	13	12	1.70	HKM.25.02	491440	62.12	-	-
254-270(10")	1.5x60°	110	80	40	16	30	30	13	12	2.28	HKM.25.03	491455	89.31	-	-
254-270(10")	1.5x60°	110	100	40	16	30	30	13	12	2.90	HKM.25.04	491475	106.89	491476	320.67
254(10")	1.5x60°	110	45	45	18	25	30	15	15	1.57	HKM.25.10	491485	50.01	-	-
304-381(12")	1.5x60°	130	50	50	18	25	30	15	20	2.05	HKM.30.01	491490	67.03	491491	201.10
304-381(12")	1.5x60°	130	60	50	18	25	30	15	22	2.55	HKM.30.02	491500	73.32	-	-
304-381(12")	1.5x60°	130	80	50	18	25	30	15	22	3.44	HKM.30.03	491505	101.86	-	-
304-381(12")	1.5x60°	130	100	50	18	25	30	15	22	4.30	HKM.30.04	491520	113.17	491521	339.27
304(12")	1.5x60°	130	50	50	21	22	30	17	20	2.04	HKM.30.10	491535	67.03	491536	207.26
304(12")	1.5x60°	130	100	50	21	22	30	17	20	4.20	HKM.30.13	491555	133.16	491556	399.23
304(12")	1.5x60°	130	50	50	21	22	35	17	20	2.04	HKM.30.15	491565	67.03	-	-
381(15")	1.5x60°	155	60	60	22	37	43	21	-	3.65	HKM.38.00	491580	133.16	491581	399.23
381-454(15")	1.5x60°	165	70	70	22	37	43	21	-	5.40	HKM.38.01	491590	163.76	-	-
381(15")	1.5x60°	156	70	70	22	30	60	21	-	5.10	HKM.38.05	491620	163.76	-	-
381-454(15")	3x60°	155	60	60	22	30	50	21	-	3.65	HKM.38.3.00	491665	133.16	491666	399.23
381-454(15")	3x60°	156	70	70	22	30	50	21	-	5.10	HKM.38.3.01	491675	163.76	-	-
381(15")	1.5x60°	135	60	50	25.5	26	43	21	-	2.49	HKM.38.10	491640	92.62	491641	277.50
381-454(15")	1.5x60°	165	70	70	25.5	37	43	21	-	5.40	HKM.38.11	491655	163.76	491656	491.04
381(15")	1.5x60°	135	100	50	25.5	26	43	21	-	4.14	HKM.38.12	491672	157.14	-	-
454-610(18")	3x60°	200	70	70	25	40	60	21	-	6.60	HKM.53.3.01	491700	200.76	-	-