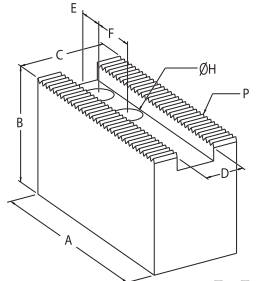
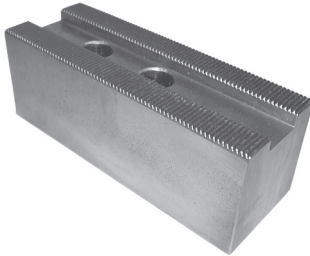


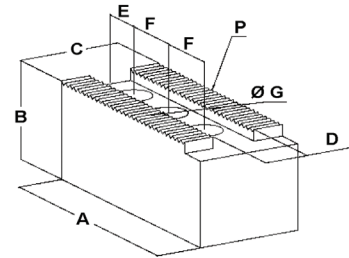
Inch Serrated Soft Top Jaws — Rectangular

STM Jaws (Type I, Ia, III)

- Type I: For SMW, Berg, Gamet, Shunk, Rohm, Forkardt
- Type Ia: For self contained pneumatic power chucks
- Type III: For SMW Autoblok



I, Ia



III

Chuck Dia.	Serration	Type	A	B	C	D	E	F	G	H	Wt. (kg)	Model No.	Code No.	Individual Price \$
125	1/16x90°	I	68	40	30	11	-	18	-	M8	-	192200/S	491848	48.42
160	1/16x90°	I	88	50	35	14	-	25	-	M10	-	192201/S	491850	56.76
160	1/16x90°	I	70	60	40	17	15	22	-	M12	1.05	242200/F	491130	51.74
200	1/16x90°	Ia	88	50	38	17	-	28	-	1/2"	-	HKM200	491800	91.60
200	1/16x90°	I	98	50	40	17	-	29	-	M12	-	192202/S	491852	60.07
200	1/16x90°	I	90	60	40	17	25	22	-	M12	1.40	242201/F	491131	53.32
250	1/16x90°	I	108	70	50	21	-	30	-	M14	-	192203/S	491854	71.48
250	1/16x90°	I	120	80	50	21	30	28	-	M16	3.08	242202/F	491132	75.37
250-315	1/16x90°	Ia	120	38	50	21	-	30	-	1/2"	-	HKM250-315	491802	127.93
300	1/16x90°	I	140	90	60	25.5	30	35	-	M20	4.70	242203/F	491133	133.72
315	1/16x90°	I	120	70	50	21	-	30	-	M16	-	192204/S	491856	99.47
315	1/16x90°	I	140	70	50	21	-	30	-	M16	-	192204/S L140	491086	120.48
400	3/32x90°	Ia	160	75	63	25	-	40	-	3/4"	-	HKM400	491804	196.13
400	3/32x90°	Ia	160	100	63	25	-	35	-	M18	-	HKM400S	491806	266.51
400	3/32x90°	I	160	80	60	25.5	-	40	-	M18	-	192205/S	491090	157.48
400-500	3/32x90°	Ia	172	63	63	25	-	38	-	M20	-	HKM400-500L6.75A	491820	278.93
400-500	3/32x90°	I	200	90	60	25.5	-	35	-	M20	-	242204/F L200	491862	224.97
400-500	3/32x90°	I	250	90	60	25.5	-	35	-	M20	-	242204/F L250	491864	275.22
400-500	3/32x90°	I	155	90	60	25.5	30	35	-	M20	6.40	242204/F	491135	150.16
500	3/32x90°	Ia	160	75	63	25	-	40	-	3/4"	-	HKM500	491808	233.19
500	3/32x90°	Ia	200	100	63	25	-	40	-	M18	-	HKM500S	491810	364.63
500	3/32x90°	III	170	60	60	28	27	38	38	M20	3.62	102210/A	491050	162.83
500	3/32x90°	III	170	60	60	25.5	27	38	38	M20	3.62	102210/A c25.5	491055	162.83
630	3/32x90°	Ia	210	88	88	30	-	63	-	1"	-	HKM630	491812	429.01
630	3/32x90°	Ia	241	88	75	30	-	65	-	M24	-	HKM630S	491814	471.86
630	3/32x90°	Ia	242	83	83	30	-	50	-	M24	-	HKM630AL9.50	491822	471.86
800	3/32x90°	Ia	210	88	88	30	-	63	-	1"	-	HKM800	491816	429.01
800	3/32x90°	Ia	300	88	75	30	-	65	-	M24	-	HKM800S	491818	536.23
800-1000	3/32x90°	Ia	318	83	83	30	-	50	-	M24	-	HKM800-1000AL12.5	491824	557.66