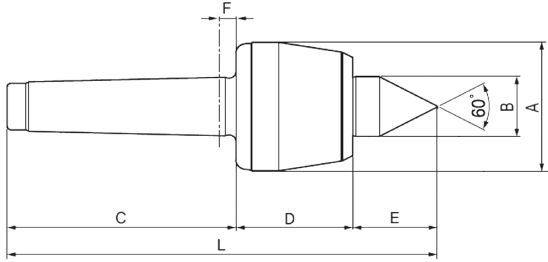


## CNC High Speed Live Centres — Standard Point

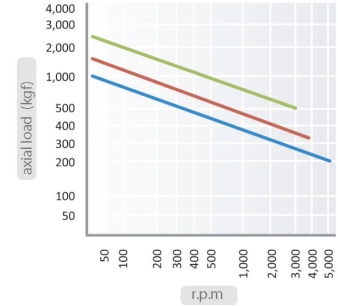
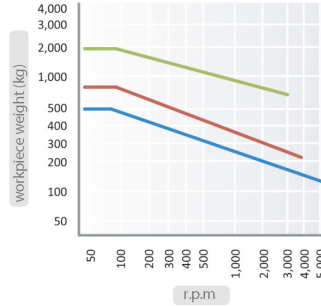


### Features

- Accuracy guaranteed to 0.003mm TIR (0.0001")
- Excellent for CNC and conventional machines
- Heat treated point to 60±2HRC
- High performance lip seal and deflected shaft design protects bearing space from ingress by dust and coolant
- 4-Bearing System: a double row angular contact bearing, a radial ball bearing, and a rear needle roller bearing combine to provide excellent rigidity and high precision point concentricity
- Heat treated drop-forged body (50±2HRC) for extra strength, rigidity, and long life
- Shaft borehole for easy dismounting



- MT2-3
- MT4
- MT5



### Dimensions

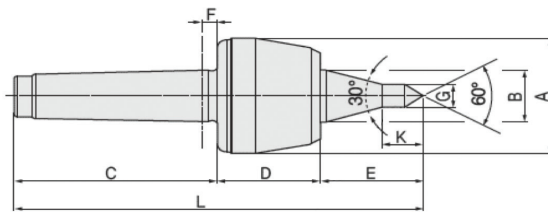
MT	A (mm)	B (mm)	C (mm)	D (mm)	E (mm)	F (mm)	L (mm)	Workpiece Weight	Max RPM	Weight	Max Runout	Code No.	Price \$
2	50	25	68	43.5	29.5	6	141	500 kg	5,000	0.7 kg	0.003mm	311011	533.28
3	50	25	85	43.5	29.5	6	158	500 kg	5,000	0.8 kg	0.003mm	311012	455.98
4	69	32	108	55	40	8	203	800 kg	3,800	1.85 kg	0.003mm	311013	567.53
5	88	40	136	70	50.5	8	256.3	2,000 kg	3,000	4.2 kg	0.003mm	311014	618.41
6	105	50	189	81.5	57.5	10	328	3,500 kg	2,800	8.7 kg	0.005mm	311015	1,467.75

## CNC High Speed Live Centres — Extended A Type Point

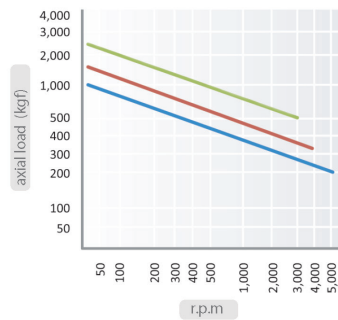
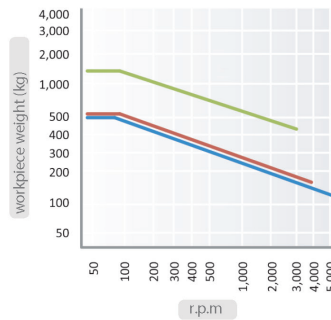


### Features

- Accuracy guaranteed to 0.003mm TIR (0.0001")
- Excellent for CNC and conventional machines
- Specially shaped elongated centre point improves tool clearance and machining flexibility for cramped area work
- Heat treated point to 60±2HRC
- High performance lip seal and deflected shaft design protects bearing space from ingress by dust and coolant
- 4-Bearing System: a double row angular contact bearing, a radial ball bearing, and a rear needle roller bearing combine to provide excellent rigidity and high precision point concentricity
- Heat treated body for extra strength, rigidity, and long life



- MT2-3
- MT4
- MT5



### Dimensions

MT	A (mm)	B (mm)	C (mm)	D (mm)	E (mm)	F (mm)	G (mm)	K (mm)	L (mm)	Workpiece Weight	Max RPM	Weight	Max Runout	Code No.	Price \$
2	50	25	68	43.5	50	6	10	19	161.5	500 kg	5,000	0.7 kg	0.003mm	311016	444.24
3	50	25	85	43.5	50	6	10	19	178.5	500 kg	5,000	0.8 kg	0.003mm	311017	455.98
4	69	32	108	55	63.5	8	12.5	23.5	226.5	550 kg	3,800	1.9 kg	0.003mm	311018	567.53
5	88	40	136	70	80	8	12.5	23.5	286	1,500 kg	3,000	4.4 kg	0.003mm	311019	618.41