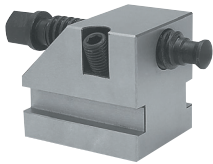


Parts & Accessories For GS Modular Vises



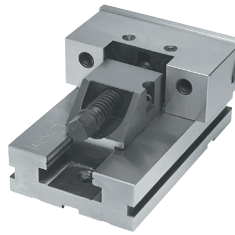
Mechanical Blocking Device



Swivel Base



Extension Base



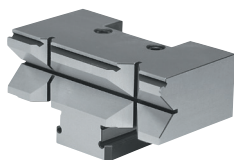
Moveable Jaw Section and Base



Fixed Jaw Section and Base

| Part Description | #1 Code No. | Price \$ | #2 Code No. | Price \$ | #3 Code No. | Price \$ | #4 Code No. | Price \$ | #5 Code No. | Price \$ | #6 Code No. | Price \$ |
|---|----------------|----------|--------------|----------|-----------------|----------|-----------------|----------|----------------|----------|------------------|----------|
| Swivel Base | 382380 | 516.88 | 382385 | 591.14 | 382390 | 703.25 | 382395 | 771.68 | 382400 | 1,116.75 | 382405 | 1,391.94 |
| Extension Base | 382260 | 428.07 | 382265 | 481.17 | 382270 | 534.92 | 382275 | 588.68 | 382280 | 738.35 | 382285 | 1,035.22 |
| Mechanical Blocking Device | 382470 | 208.21 | 382475 | 244.61 | 382480 | 297.02 | 382485 | 334.88 | 382490 | 416.42 | 382495 | 621.71 |
| Moveable Jaw | 382412 | 208.21 | 382417 | 264.99 | 382422 | 315.95 | 382427 | 478.51 | 382432 | 722.75 | 382437 | 1,070.51 |
| Fixed Jaw | 382410 | 208.21 | 382415 | 264.99 | 382420 | 315.95 | 382425 | 478.51 | 382430 | 722.75 | 382435 | 1,070.51 |
| Main Screw | 382850 | 62.61 | 382852 | 85.90 | 382854 | 101.92 | 382856 | 101.92 | 382859 | 144.14 | 382860 | 144.14 |
| T-Wrench | 382820 | 20.38 | 382822 | 20.38 | 382824 | 21.84 | 382826 | 21.84 | 382828 | 26.21 | 382830 | 26.21 |
| Box Wrench | 382874 | 39.31 | 382876 | 39.31 | 382878 | 45.14 | 382880 | 45.14 | 382882 | 80.08 | 382884 | 80.08 |
| Vise Holding Jaws (Pair) | 382685 | 75.33 | 382690 | 75.33 | 382695 | 105.53 | 382700 | 105.53 | 382705 | 113.57 | 382710 | 113.57 |
| Positioning Keys | 382655 | 43.68 | 382660 | 43.68 | 382665 | 43.68 | 382670 | 43.68 | 382675 | 43.68 | 382680 | 43.68 |
| Work Stop | 382770 | 46.79 | 382775 | 46.79 | 382780 | 46.79 | 382785 | 46.79 | 382790 | 58.24 | 382795 | 58.24 |
| Jaw Plate for Fixed Jaw | 382862 | 85.90 | 382864 | 93.18 | 382866 | 134.07 | 382868 | 146.34 | 382870 | 189.28 | 382872 | 253.34 |
| Jaw Plate for Moveable Jaw | 382863 | 85.90 | 382865 | 93.18 | 382867 | 134.07 | 382869 | 146.34 | 382871 | 189.28 | 382873 | 253.34 |
| Lock Screw for Blocking Device | 382471 | 11.65 | 382476 | 11.65 | 382481 | 14.56 | 382486 | 14.56 | 382491 | 16.02 | 382496 | 16.02 |
| | M6x1 x 25mm | | M12x1 x 25mm | | M14x2 x 35mm | | M12x1.75 x 40mm | | M20x2.5 x 60mm | | M20x2.5mm x 50mm | |
| | 382472 | 6.93 | | | 382482 | 12.02 | | | | | | |
| | M8x1.25 x 25mm | | | | M12x1.75 x 30mm | | | | | | | |
| Chrome Locking Ball for Blocking Device | 382473 | 11.45 | | | | | | | | | | |
| | 9/16" dia. | | | | | | | | | | | |
| Pre-Assembled Groups | | | | | | | | | | | | |
| Overall Length | 5.5" | | 6.30" | | 9" | | 10" | | 12" | | 13.75" | |
| Leadscrew Overhang | 2.08" | | 2.3" | | 2.8" | | 2.0" | | 3" | | 2.16" | |
| Moveable Jaw Section and Base Assembly | 382290 | 495.04 | 382295 | 615.89 | 382300 | 774.59 | 382305 | 907.09 | 382310 | 1,351.17 | 382315 | 2,727.44 |

Prismatic Jaws

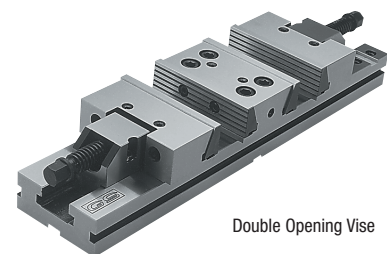


| Model No. | Code No. | Price \$ |
|-----------|----------|----------|
| #3 | 382890 | 321.56 |
| #4 | 382892 | 428.07 |
| #5 | 382894 | 534.92 |

GS Modular Vises — Single & Double Opening



- High accuracy
- No length limitations
- Unlimited clamping range
- No jaw lift
- High quality alloy steel
- Low profile
- High clamping pressure
- All vises are matched
- Mechanical and pneumohydraulic blocking devices
- Extra long base



Double Opening Vise

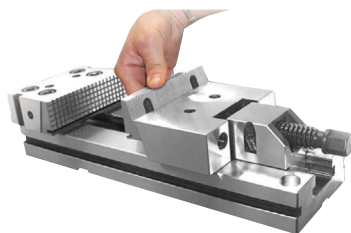
Modular Vise w/ Quick Interchangeable Pulldown Jaws



No tools needed for quick hand change of downward jaw plates



Soft Jaws



| Description | Code No. | Price \$ |
|--------------------|----------|----------|
| 6 x 8 Modular Vise | 382896 | 1,507.11 |
| Pair Soft Jaws | 382897 | 250.43 |

| Model | Opening | O.A.L. | Jaw Width | Weight (kg) | Code No. | Price \$ |
|------------------------------------|---------|--------|-----------|-------------|----------|-----------|
| Single Opening Modular Vise | | | | | | |
| 1 | 11.4 | 18 | 4 | 10 | 382101 | 1,113.84 |
| 2 | 12.6 | 20.5 | 5 | 17 | 382102 | 1,499.68 |
| 3 | 14.7 | 23 | 6 | 31 | 382103 | 1,863.68 |
| 3 | 18.11 | 27 | 6 | 34 | 382104 | 2,064.61 |
| 4 | 16 | 26 | 7 | 46 | 382105 | 2,175.26 |
| 4 | 20 | 30 | 7 | 51 | 382106 | 2,390.75 |
| 5 | 24 | 36 | 8 | 92 | 382110 | 4,117.57 |
| Double Opening Modular Vise | | | | | | |
| 3 | 2 x 4.3 | 23 | 6 | 38 | 382153 | 2,261.17 |
| 3 | 2 x 6.3 | 27 | 6 | 41 | 382154 | 2,467.92 |
| 4 | 2 x 6.7 | 30 | 7 | 63 | 382156 | 2,856.67 |
| 5 | 2 x 10 | 40 | 8 | 107 | 382172 | 5,145.50 |
| 6 | 2 x 6.3 | 35 | 12 | 154 | 382175 | 6,131.22 |
| 6 | 2 x 16 | 55 | 12 | 194 | 382180 | 10,128.75 |