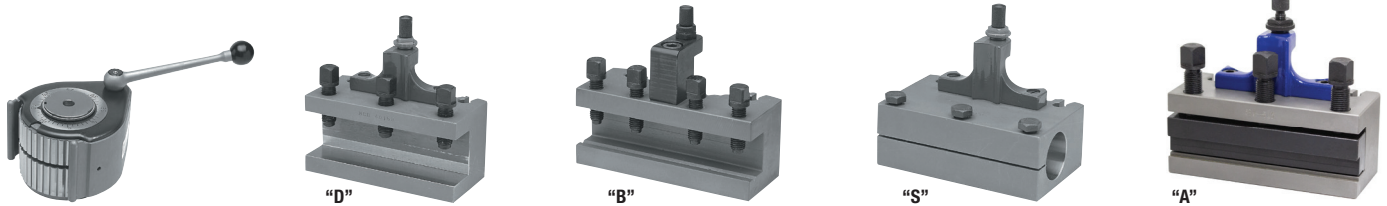
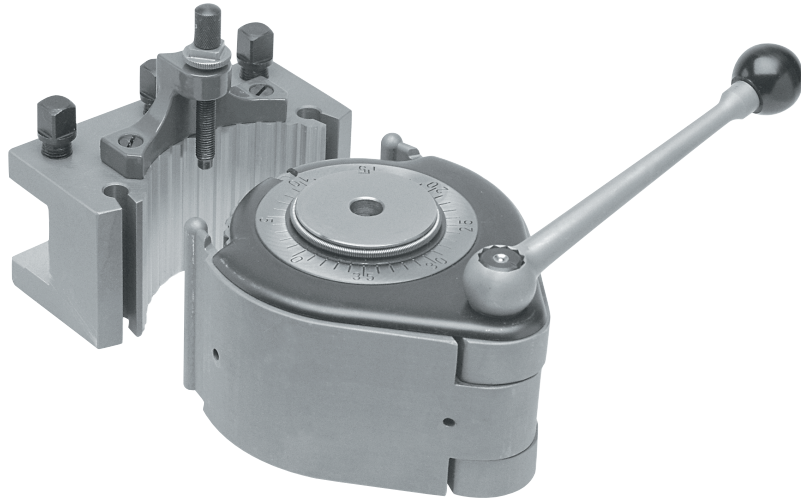


40 Position Quick Change Tool Posts & Holders

Swing	
AOT	Up to 9"
A1T	6" - 13"
ET	10" - 18"
BT	13" - 20"
CT	18" - 30"
DT	22" - 35"



Quick Change Tool Posts & Holders



Toolpost			Toolholder "D" Flat				Toolholder "B" V-Groove				Toolholder "S" Boring Bar Holder				Toolholder "A" Part Off	
	Toolholder		*NH	L	Code No.	Price \$	*NH	L	Code No.	Price \$	*D	L	Code No.	Price \$	Code No.	Price \$
AOT	388005	371.04	12	50	388010	112.26	12	50	388015	119.62	15	50	388020	170.36		
A1T	388035	465.90	20	80	388040	123.31	18	80	388045	131.09	30	80	388050	197.92	388055	280.57
E5T	388100	592.88	20	100	388105	165.79	30	100	388115	192.60	30	100	388120	243.95	388130	319.02
			25	100	388110	212.77					40	100	388125	256.18		
			25	120	388185	192.60										
			25	140	388190	229.27										
B2T	388180	677.35	32	120	388195	196.59	32	130	388205	219.76	40	120	388210	316.07	388215	358.60
			32	140	388200	251.79										
			32	150	388270	300.30										
			32	170	388275	341.60										
C3T	388265	1,269.93	40	150	388280	327.28	32	160	388295	350.52	40	150	388305	500.02	388315	423.82
			40	170	388285	371.64	40	170	388300	363.42	50	150	388310	525.09		
			45	170	388290	390.00										
D4T	388375	2,107.22	40	180	388380	555.78	50	180	388395	804.92	63	180	388400	851.49		
			50	180	388385	593.12										
			63	180	388390	646.50										

* Notch Height

* Notch Height

* Diameter

Quick Change Tool Posts Parts



Toolholder Size	Square Head Screw	Cheese Head Screw	Adjusting Top	Height Adj. Nut	Height Adj. Screw
AOT	388501 3.35	388502 1.57	388503 7.45	388504 9.18	388505 3.38
A1T	388506 3.35	388507 1.57	388508 7.69	388509 9.18	388510 3.38
B2T	388516 6.21	388517 2.01	388518 12.12	388519 11.00	388520 4.93
C3T	388521 7.20	388522 3.71	388523 13.33	388524 12.41	388525 5.15
D4T	388526 9.93	388527 5.09	388528 18.92	388529 17.11	388530 7.63
E5T	388511 3.35	388512 2.01	388513 11.62	388514 9.18	388515 4.45