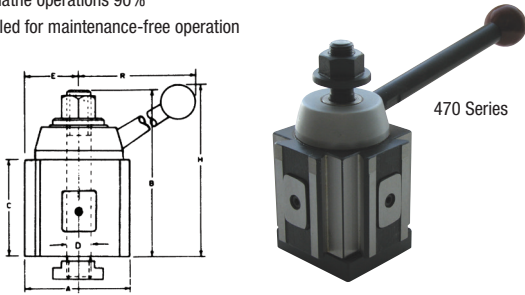


## Piston Type Tool Post



- All working parts hardened and ground
- Maximum rigidity for chatter-free performance
- No time wasted with shims
- Speed up your lathe operations 90%
- Completely sealed for maintenance-free operation

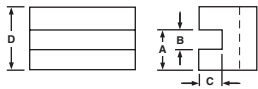


A	B	C	D	E	H	R	Swing	Code No.	Price \$
2 1/2	3 7/8	2 1/4	9/16	1 3/8	4 11/16	5 3/4	Up To 12"	470100	179.83
3	4 5/8	2 3/4	5/8	1 5/8	5 9/16	7 5/16	10-15"	470200	216.82
3 1/2	5 1/8	3	3/4	1 7/8	6 1/8	7 7/8	13-18"	470300	311.59
4	6 1/4	3 5/8	7/8	2 1/8	7	9	14-20"	470400	593.76

## Turning & Facing Holder (#1)



Takes various sizes of bits. Turning and facing tools can be locked in together. Saves time and labor when changing operations.

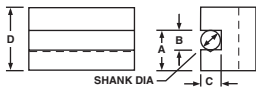


A	B	C	D	Tool Bit	Code No.	Price \$
15/16	1/2	7/16	1 1/2	3/16 - 1/2	470101	44.19
1 1/8	5/8	1/2	1 3/4	1/4 - 5/8	470201	47.98
1 7/16	3/4	5/8	2 1/8	1/2 - 3/4	470301	78.59
1 11/16	1"	3/4	2 1/2	1/2 - 1"	470401	98.45

## Boring, Turning & Facing Holder (#2)



"V" groove holds round shank boring bars and tools as well as square tool bits.

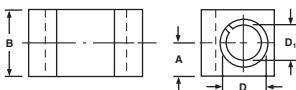


A	B	C	D	Tool Bit	Shank	Code No.	Price \$
15/16	1/2	7/16	1 1/2	3/16 - 1/2	7/16	470102	46.05
1 1/8	5/8	1/2	1 3/4	1/4 - 5/8	1/2	470202	52.49
1 7/16	3/4	5/8	2 1/8	1/2 - 3/4	3/4	470302	81.79
1 11/16	1"	3/4	2 1/2	1/2 - 1"	13/16	470402	102.93

## Heavy Duty Boring Bar Holder (#4)



Equipped with a split bushing to accommodate a boring bar of smaller diameter. It grips bar with extreme rigidity, cuts smoothly without chatter.



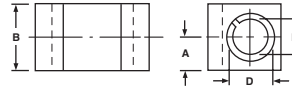
A	B	D	D1	Code No.	Price \$
3/4	1 1/2	3/4	5/8	470104	64.38
1"	2	1"	3/4	470204	77.18
1"	2	1"	3/4	470304	114.55
1 3/8	2 3/4	1 1/4	1"	470404	135.00

Tool holders do not include tool bits, boring bars, drills or carbide inserts.

## Heavy Duty Boring Bar Holder (#41)



Equipped with a split bushing to accommodate a boring bar of smaller diameter. It grips bar with extreme rigidity, cuts smoothly without chatter.



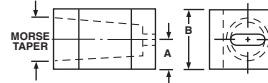
A	B	D	D1	Code No.	Price \$
7/8	1 3/4	1"	3/4	470141	65.31
1"	2	1 1/4	1"	470241	91.84
1 1/8	2 1/4	1 1/4	1"	470341	107.12
1 3/8	2 3/4	1 1/2	1 1/4	470441	134.32

## Morse Taper Holder For Drilling (#5)



Drills with carriage by using power feed instead of tail stock. Easily centered.

For No. 2, 3 and 4 Morse Taper Drills.



A	B	Taper Hole Size	Code No.	Price \$
3/4	1 1/2	#2 M.T.	470105	78.12
7/8	1 3/4	#2 M.T.	470205	82.84
1"	1 1/2	#3 M.T.	470305	92.40
1 1/4	2 1/2	#3 M.T.	470405	114.13

## Morse Taper Holder For Drilling (#53)



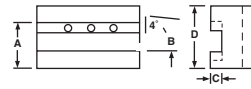
- Refer to diagram above (#5)

A	B	Taper Hole Size	Code No.	Price \$
3/4	1 1/2	#3 M.T.	470153	97.49
7/8	1 3/4	#3 M.T.	470253	102.00
1 1/16	2 1/8	#4 M.T.	470354	109.14
1 1/4	2 1/2	#4 M.T.	470454	128.88

## Universal Parting Blade Holder (#7)



For bevel as well as T-cut blades. Enables you to cut-off close to chuck. Absence of vibration prevents breaking blades.

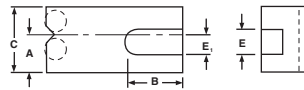


A	B	C	D	Blade Height	Code No.	Price \$
13/16	1/2	3/16	1 1/2	1/2	470107	68.08
1"	11/16	3/16	1 3/4	11/16	470207	73.45
1 7/16	3/4	3/16	2	3/4	470307	110.34
1 7/16	7/8	1/4	2 1/2	7/8	470407	127.61

## Knurling, Turning & Facing Holder (#10)



"V" groove holds round shank boring bars and tools as well as square tool bits. For turning and facing as well as knurling. Supplied with a set of high speed precision ground and lapped medium diameter knurls. Easily replaceable.



A	B	C	E	E1	Tool Bit	Code No.	Price \$
7/8	2 1/2	1 9/16	1/2	3/8	3/16 - 1/2	470110	72.72
1"	2 5/8	1 3/4	5/8	1/2	1/4 - 5/8	470210	89.25
1 3/16	3 1/8	2	3/4	5/8	1/2 - 3/4	470310	135.62
1 7/16	3 3/4	2 1/2	1"	3/4	1/2 - 1	470410	144.42