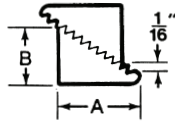
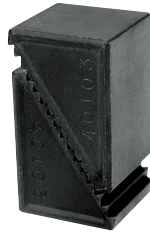


Workholding, Clamping & Fixturing

Steel Step Blocks

- Case hardened
- Black oxide finish
- Teeth match all serrated end clamps



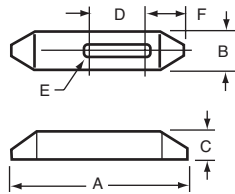
NOTE:
2 pieces = 1 block



Width (in.)	A (in.)	B (in.)	Height Adj. Range (in.)	STM Code No.	Price \$
1	1-1/16	11/16	3/4-1-5/8	333875	8.30
1	1-39/64	1-1/16	1-1/8-2-1/2	333876	11.25
1	3-3/4	2-15/32	2-1/2-6	333877	32.36
1-1/2	2-17/32	1-43/64	1-3/4-4	333878	14.39
1-1/2	3-3/4	2-15/32	2-1/2-6	333879	28.51
1-1/2	5-21/64	3-7/16	3-1/2-9	333880	51.37

Plain Clamps

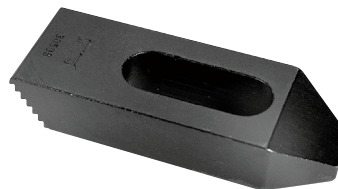
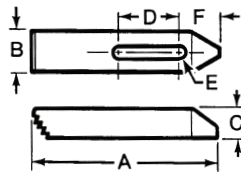
- Case hardened
- Black oxide finish



Model No.	A	B	C	D	Stud Size E	F	Weight (lb/100)	STM Code No.	Price \$
Inch									
P-1225	2-1/2	1-1/8	1/2	11/16	1/2	29/32	24	333862	12.38
P-124	4	1-1/4	3/4	1-5/16	1/2	1-5/32	67	333864	25.89
P-126	6	1-1/4	7/8	2-1/16	1/2	1-9/32	37	333866	33.24
P-5825	2-1/2	1-1/4	5/8	9/16	5/8	31/32	31	333868	14.13
P-584	4	1-1/2	3/4	1-3/16	5/8	1-9/32	83	333870	26.53
P-586	6	1-1/2	7/8	1-15/16	5/8	1-13/32	150	333872	32.35

Serrated Clamps

- Case hardened
- Black oxide finish
- Teeth match all step blocks



Model No.	A	B	C	D	Stud Size E	F	Weight (lb/100)	STM Code No.	Price \$
Inch									
S-1225	2-1/2	1-1/8	1/2	11/16	1/2	29/32	27	333850	12.87
S-124	4	1-1/4	3/4	1-5/16	1/2	1-5/32	72	333852	24.41
S-126	6	1-1/4	7/8	2-1/16	1/2	1-5/32	134	333854	33.78
S-5825	2-1/2	1-1/4	5/8	9/16	5/8	31/32	33	333856	16.08
S-584	4	1-1/2	3/4	1-3/16	5/8	1-7/32	87	333858	28.13
S-586	6	1-1/2	7/8	1-15/16	5/8	1-11/32	160	333860	40.79