



## Simple Index

The Simple Index is a heavy-duty base on which is mounted a hardened and ground precision turntable. It can be used in either a horizontal and vertical position. Using one of the masking plates provided, the index can carry out many dividing functions. Indexing of 2, 3, 4, 6, 8, 12 and 24 divisions can be rapidly and simply carried out. The specially-made 3-jaw scroll chuck also simplifies the indexing of long workpieces.

**Optional Equipment:** Master indexing plate with 20 or 30 notches can be supplied to special order. When used with the suitable masking plates dividing into 2, 4, 5, 10, and 2, 3, 5, 6, 10, 15 are possible.

### Special Accessories

- 3-jaw scroll chuck dia. 8" 1 piece
- Adjustable tailstock
- Face plate 10" (maximum)
- Masking plates 2, 3, 4, 6, 8, 12 one piece of each

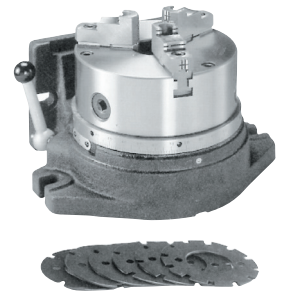
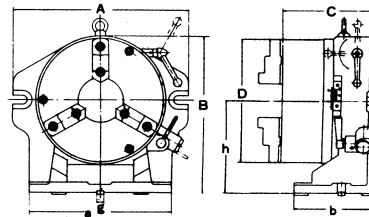
### Standards of Accuracy (Tolerances):

#### Testing Objective

1. Parallelism of table surface to base 0.00 (0.0004)
2. True running of axial movement of table surface 0.0008
3. True running of centre boss 0.0006
4. Squareness of base to angle face 0.0008
5. True running of chuck centre 0.0016
6. Dividing accuracy individual spacing error  $\pm 35''$

#### Tolerances Unit (max. in. permit)

- per 12"  
0.0008  
0.0006  
per 12"  
0.0016  
 $\pm 35''$



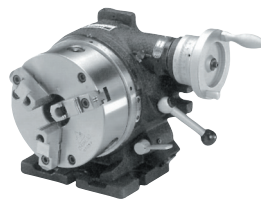
### Options

Description	Code No.	Price \$
Optional Tailstock for CC-6	326553	302.99
Optional Tailstock for CC-8	326554	307.40

No. of Dividing	Outer Dia.	Chuck Inner Jaw	Outer Jaw	Inner Hold	A	B	C	D	a	b	h	g	Weight kg/lb	Shipping Meas. cu.ft.	Code No.	Price \$
2,3,4,6, 8,12,24	165	3-62	60-120	34	260	218	138	166	220	130	130	16	35	0.64	CC-6	
	6.5	0.12-2.44	2.36-4.72	1.34	10.24	8.58	5.43	6.54	8.66	5.12	5.12	0.63	77.1		326136	1,501.50
2,3,4,6, 8,12,24	210	3-100	10-220	63	312	257.25	169.3	210	258	48	149.2	16	54	1.8	CC-8	
	8.27	0.12-3.94	0.39-8.66	2.48	12.28	10.13	6.67	8.27	10.16	5.83	5.87	0.63	119.0		326138	2,089.78

## Super Dex

This index combines the advantages of the Simple Index with those of a worm-gear index. When mounted on a milling, boring or other machine tool it can carry out single-purpose indexing and indirect indexing using the worm-drive mechanism. Disengaging the worm drive the 24-notch master plate permits 2, 3, 4, 6, 8, 12 and 24 dividing. When the chuck is removed the unit can be used as a horizontal and vertical type rotary table. The operating handle to rotary table worm gear reduction ratio is 1:90. The operating handle collar is graduated in minutes, and readings down to ten seconds can be set on the vernier.



### Ordering Specs. and Dimensions

(Dividing Plates not included)

Model No.	Chuck Outer Diameter	Code No.	Price \$
SX-6	6"	326140	2,058.56
SX-8	8"	326142	2,709.30

### Options

Description	Code No.	Price \$
Optional Tailstock for SX-6	326553	302.99
Optional Tailstock for SX-8	326554	307.40
Optional Dividing Plates	326152	318.09



Number of holes	Plate A	26, 30, 34, 38, 41, 44, 47, 51, 57, 28, 32, 37, 39, 43, 46, 49, 53, 59
	Plate B	61, 67, 71, 77, 81, 87, 91, 97, 63, 69, 73, 79, 83, 89, 92, 99

## Tailstocks for Indexes

Cast iron offers good vibration, resistance, good wear resistance and machinability. It is heavier and more economical than steel.

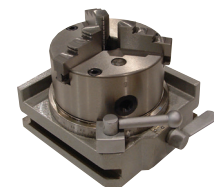


Model No.	Adjustable		For Models	Net Weight (kg)	Code No.	Price \$
	Highest (mm)	Lowest (mm)				
TS-1	108	80	HV-4, HV-6, BS-0	3.9	326552	302.99
TS-2	145	115	HV-8, CC-6, SX-6, BS-1, BS-2	5.5	326553	302.99
TS-3	200	130	HV-10, HV-12, CC-8, SX-8, BS-2	8.1	326554	307.40
TS-4	260	190	HV-14, HV-16	11.9	326555	417.18

## Rapidex

### Complete with chuck

- Simple and rapid operation
- Dividual number 24 notch (15° each)
- Table scale 1°, for angular indexing
- Table bore 30mm
- Horizontal / Vertical and 2 direction
- Suitable for milling and drilling machine using



Model No.	Chuck Outer Diameter	Code No.	Price \$
VSI-4	4"	326564	954.42
VSI-5	5"	326566	1,048.24