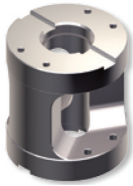


Workholding, Clamping & Fixturing

Steel Risers

Allow greater access to machine hard to reach areas of the workpiece

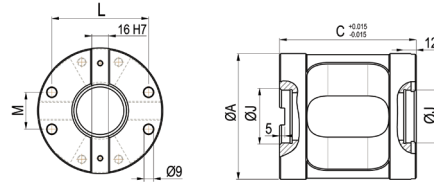


Type 1

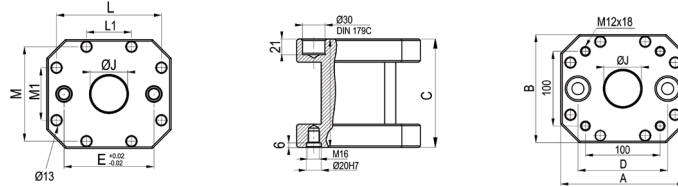


Type 3 x 166

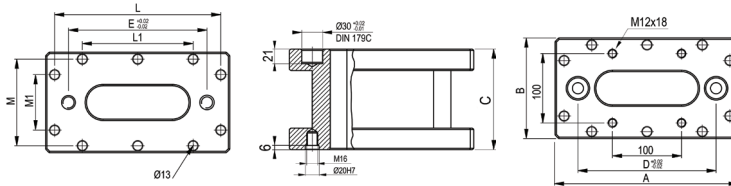
Type 1 & 2



Type 3 x 166



Type 3 x 266



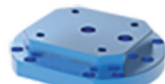
Model	A	B	C	D	E	L	L1	M	M1	ØJ	kg	Code No	Price \$
Type 1	119	-	130	-	-	92	-	35	-	50 H7	6	382521	1,465.56
Type 2	158	-	130	-	-	120	-	35	-	50 H7	10	382523	3,633.76
Type 3x166	166	145	145	120	120	140	60	126	70	50 H7	14	382525	3,074.41
Type 3x266	266	125	145	200	200	240	160	125	80	-	21.5	382527	6,789.54

Aluminum Risers

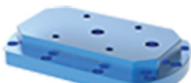
Allow greater access to machine hard to reach areas of the workpiece



Type 1 & 2

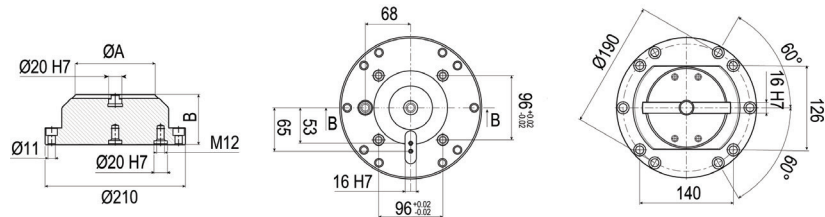


Type 3 x 166

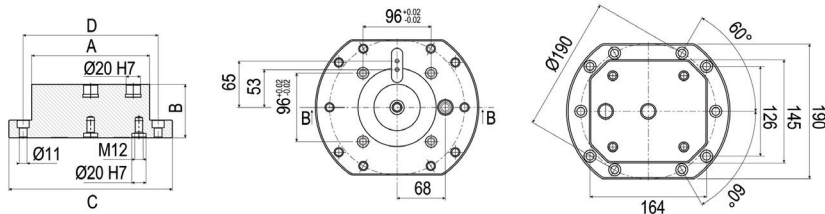


Type 3 x 266

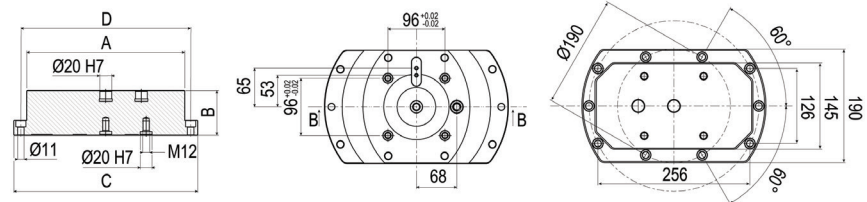
Type 1 & 2



Type 3 x 166



Type 3 x 266



Model	A	B	C	D	kg	Code No	Price \$
Type 1	Ø120	50	-	-	3	382531	737.80
Type 1	Ø120	75	-	-	4.5	382532	778.40
Type 1	Ø120	100	-	-	5.4	382533	821.80
Type 2	Ø160	50	-	-	3.5	382534	737.80
Type 2	Ø160	75	-	-	4.9	382535	778.40
Type 2	Ø160	100	-	-	6.4	382536	821.80

Model	A	B	C	D	kg	Code No	Price \$
Type 3 x 166	166	50	230	190	3.8	382541	855.40
Type 3 x 166	166	75	230	190	5.3	382542	911.40
Type 3 x 166	166	100	230	190	6.8	382543	970.20
Type 3 x 266	266	50	310	286	5.8	382544	1,316.00
Type 3 x 266	266	75	310	286	8.3	382545	1,390.20
Type 3 x 266	266	100	310	286	10.7	382546	1,468.60