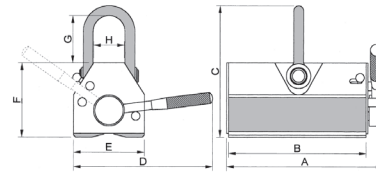


Permanent Magnetic Lifters

Features:

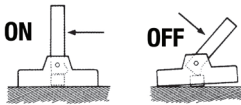
- Faster and safer than using straps and slings
- Beveled surface for lift round objects
- Magnets are maintenance free and never wear out
- Magnets have built-in safety factor of 3.5 times the rated load.
Do not lift more than the maximum rated load



Model No.	Capacity (lbs)	A (in.)	B (in.)	C (in.)	D (in.)	E (in.)	F (in.)	G (in.)	H (in.)	Weight (lbs)	Code No.	Price \$
VML-100	220	4.2	3.3	4.7	4.9	2.4	2.8	1.6	1.2	5.5	230600	742.69
VML-300	660	7.1	6.1	6.1	7.3	3.6	3.7	2.0	1.6	18.9	230605	1,757.43
VML-600	1320	10	8.8	8.3	10.2	4.5	4.7	3.0	2.0	46	230610	2,822.07
VML-1000	2200	11	9.6	11.3	14.6	6.5	6.7	3.8	3.4	101	230615	4,703.40
VML-2000	4400	16.6	15	13.7	20.2	8.5	8.5	4.1	4.8	259	230620	9,233.57

Magnetic Lifter

- Work is held and released very smoothly
- Most suitable to move materials or semi-finished products such as black steel plate, flat iron and other materials



VML-140



VML-150

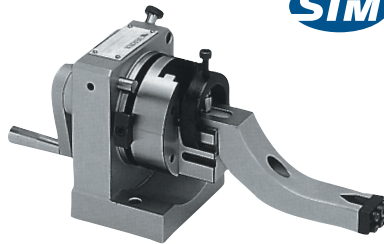


Model	Capacity (kgf)	Length (mm)	Width (mm)	Height (mm)	Code No.	Price \$
VML-140	140	120	50	55	230602	113.78
VML-150	150	140	100	140	230604	291.04

Punch Former — YCT-PS

Features:

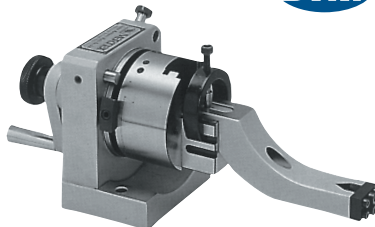
- YCT-PS can pass through from itself to the centre of grip, in case of facing a longer punch ejector pin, it can go deep into the grip position
- To assemble an arm with the main body, any combination of radii of the grinding wheel may be dressed accurately by easy operation
- The longer punch can also be ground



Style	Code No.	Price \$
Through hole	230735	1,931.66

Punch Former — YCT-PB

Punch former is the great dressing instrument. Precision forming of grinding wheels can be done by assembling an arm with the main body. Any combination of tangents or radii form of the grinding wheel may be dressed accurately by easy operation. Maximum grinding wheel diameter of 200mm can be dressed accurately and safely. The height from the base to roller's centre is 80mm. Movement of each side can reach 12.5mm while aiming at the centre of V-block. The main body is one-piece steel construction.



Features:

- Punch former is the fixture to grind the point of standard punches and E.D.M. electrodes for precise and fast operation
- By using this attachment, it can be ground either concave or convex radius shape
- Besides the round, radius and multi-angle punches, any special forms can be ground precisely
- Capacity from 4mm to 30mm

Style	Code No.	Price \$
Off set	230730	2,253.54

Chip Collector with Flexible Arm

Flexible Magnetic Pick-Up Tool

- 21" in length
- 12 lb capacity



Model No.	Code No.	Price \$
VCC-20	230640	42.35

Magnetic Chip Collector

- Wide variety of applications
- Most suitable for collecting iron pieces scattered on the floor or mixed in a medium
- Magnetic force is turned ON/OFF by operating the hand lever
- Powerful magnet with a wide attractive surface
- Material of outer cover: Aluminum



Model	Dimensions	Magnetic Force	Weight (kg)	Code No.	Price \$
VCP-15	Ø112mmx178mm	0.9kg	1.9	230650	362.84

Mini Handy Magnetic Chip Collector

- Permanent magnet
- Pull handle for easy release
- Made of impact-proof plastic
- Easy to pick up hand tools, small iron or steel parts in the office, house or factory
- Material of outer cover: Plastic



Model	Dimensions	Magnetic Force	Weight (kg)	Code No.	Price \$
VCC-16	Ø110mmx190mm	4.9kg	0.7	230655	73.84

Chip Collector with LED Light & Flexible Arm

Flexible Magnetic Pick-Up Tool

- LED light
- 21" in length
- 0.7 lb capacity
- 2pcs 1.5V batteries



Model No.	Code No.	Price \$
VCC-21	230645	43.91